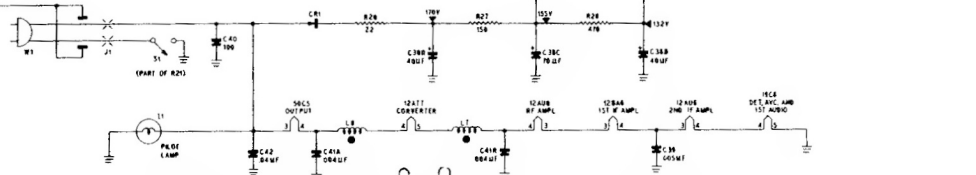
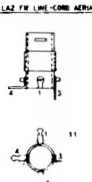
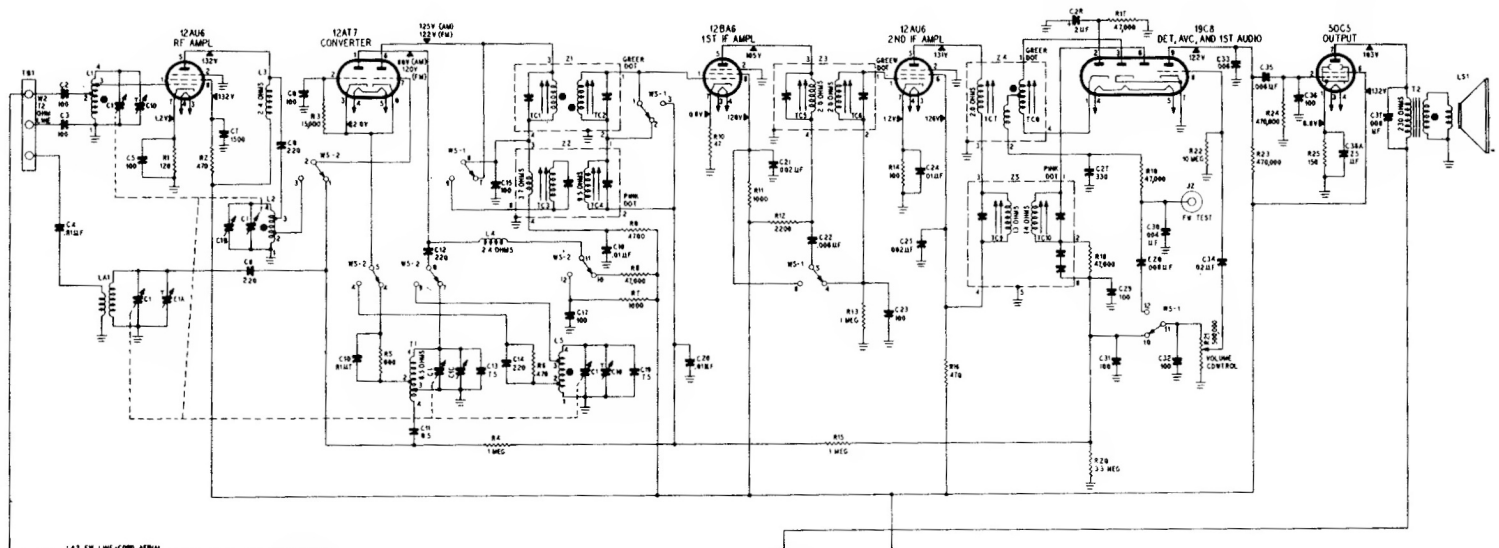
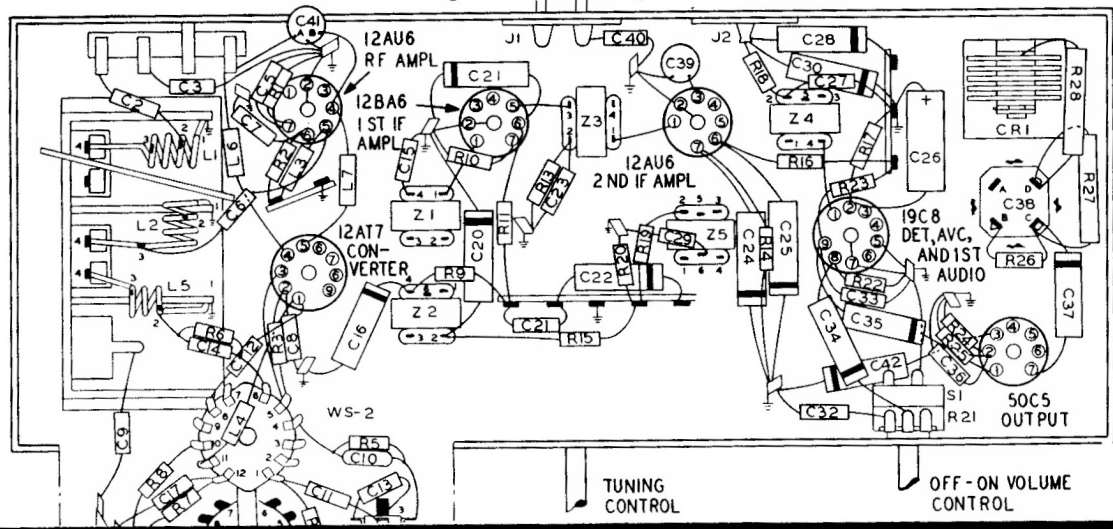
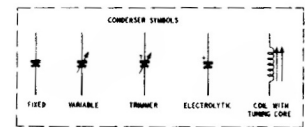


# PHILCO RADIO MODEL 51-934



IF (AM) = 455KC  
IF (FM) = 81MC



NOTES  
ALL RESISTOR VALUES IN OHMS AND ALL CONDENSER VALUES IN MICROFARADS UNLESS OTHERWISE SPECIFIED  
● LESS THAN 1 OHM  
VOLTAGE IS MEASURED FROM POINTS INDICATED TO GROUND WITH A 20,000-OHMS-PER-VOLT METER AT A LINE VOLTAGE OF 117 VAC

2-SECTION WAXER SWITCH SHOWN IN BROADCAST POSITION AS VIEWED FROM FRONT WITH CHASSIS INVERTER

SECTIONS OF SWITCHES NUMBERED WS-1, WS-2, FROM FRONT TO REAR

