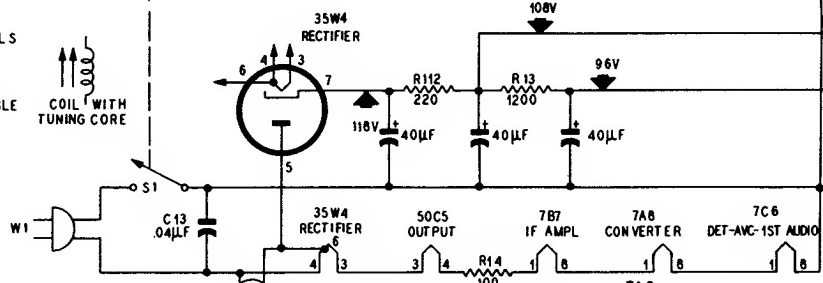
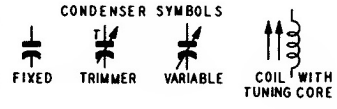
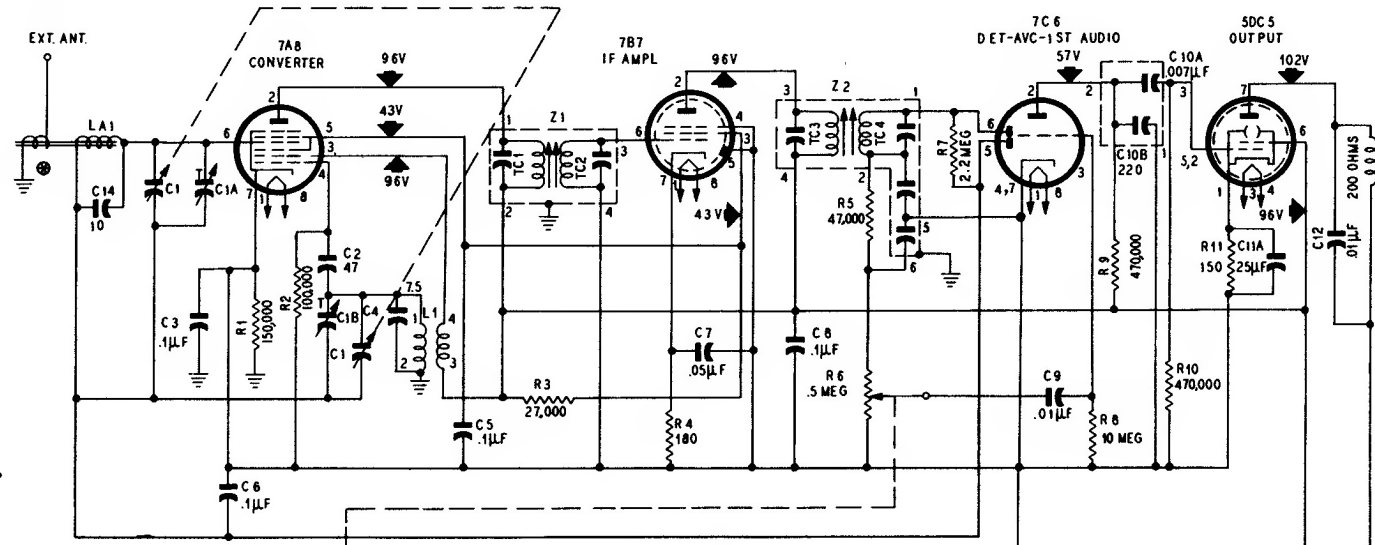


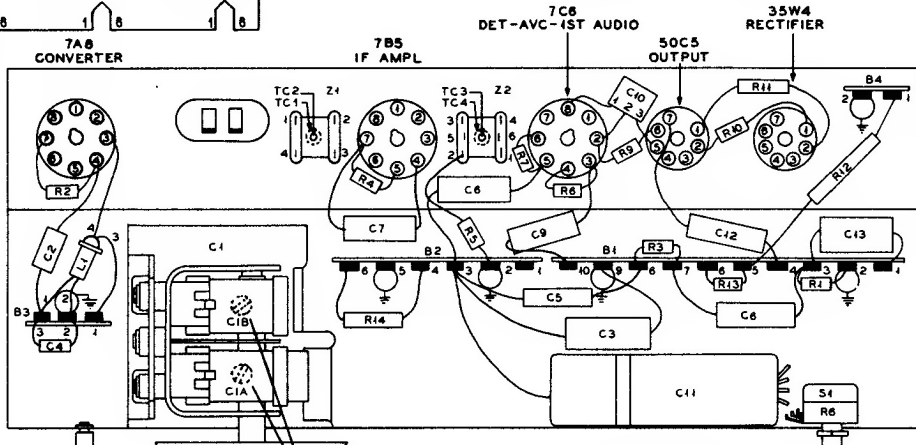
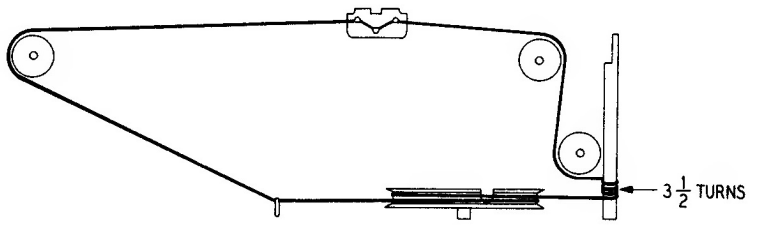
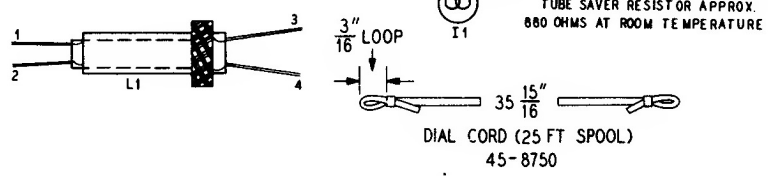
PHILCO RADIO MODEL 52-548

FREQUENCY RANGE 540-1620 kc.
 AUDIO OUTPUT 1 watt
 OPERATING VOLTAGE 105-120 volts, a.c. or d.c.
 POWER CONSUMPTION 30 watts
 INTERMEDIATE FREQUENCY 455 kc.



IF = 455 KC

ALL VOLTAGES MEASURED WITH A 20,000 OHMS-PER-VOLT VOLTMETER BETWEEN POINTS INDICATED AND B MINUS, AT A LINE VOLTAGE OF 117V A.C.
 ALL RESISTOR VALUES IN OHMS AND ALL CONDENSER VALUES IN µµF UNLESS OTHERWISE MARKED.
 ⊗ - LESS THAN ONE OHM.



C1A AND C1B ARE LOCATED ON TOP SIDE OF TUNING GANG
 C14 IS MOUNTED ON TERMINAL STRIP INSIDE CABINET AT BOTTOM