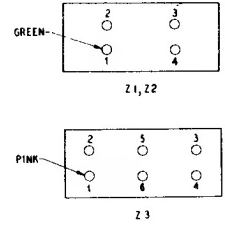
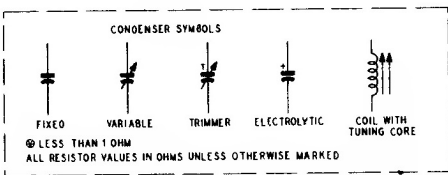
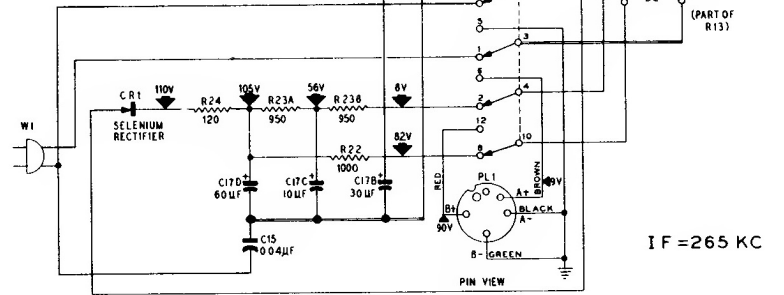
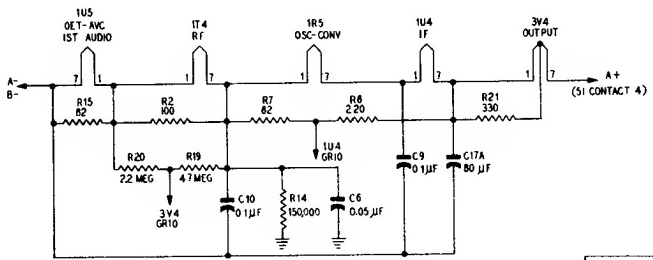
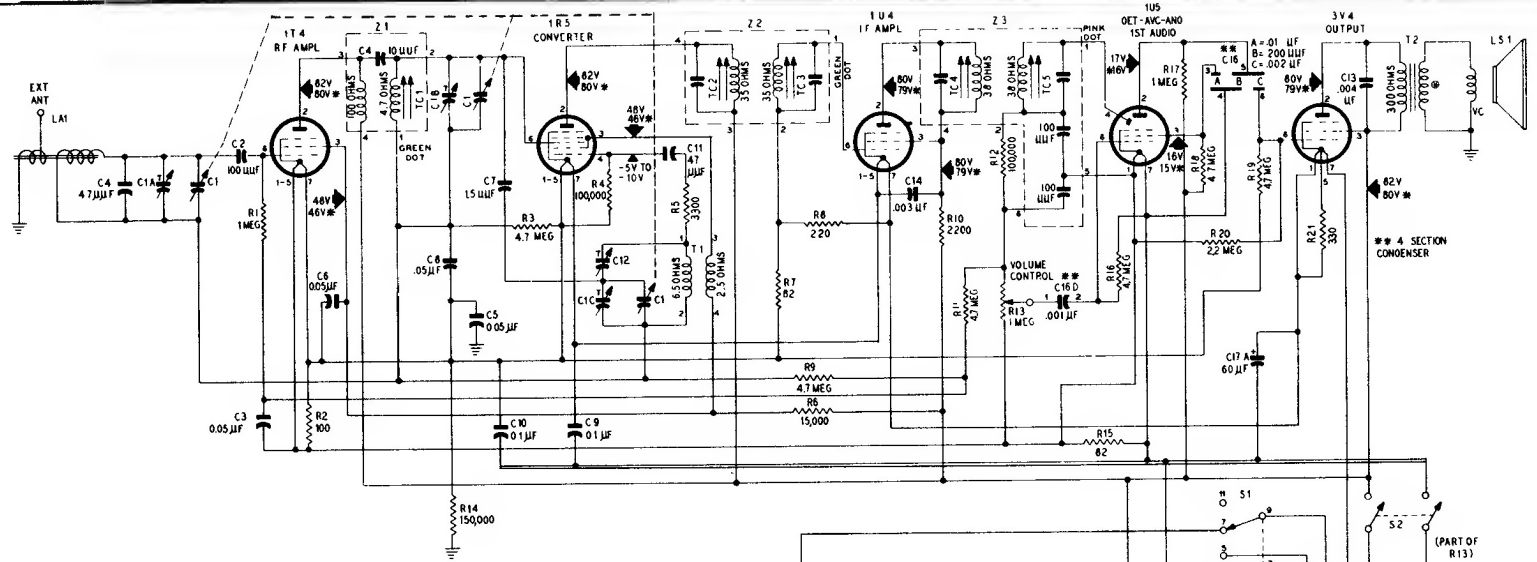
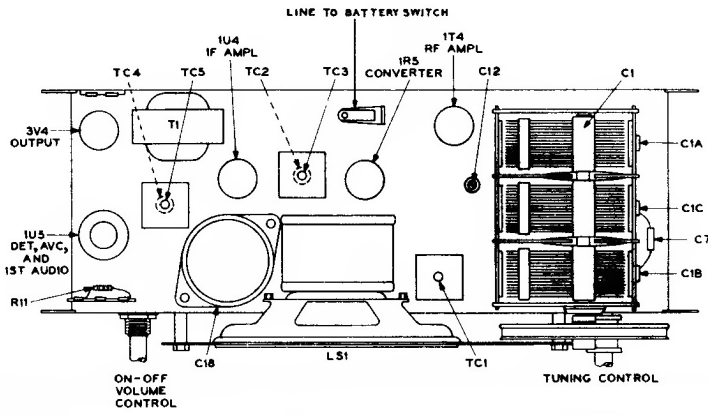
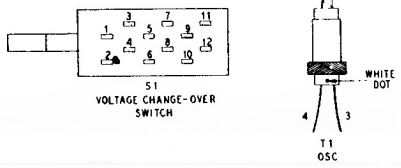


# PHILCO RADIO MODEL 52-643

FREQUENCY RANGE ..... 540—1620 kc.  
 AUDIO OUTPUT ..... 160 milliwatts  
 OPERATING VOLTAGES ..... 117 volts, a.c. or d.c.; or 9-volt "A" battery and 90-volt "B" battery



ALL VOLTAGES MEASURED WITH A 20,000-OHMS-PER-VOLT VOLTMETER BETWEEN POINTS INDICATED TO B MINUS. VOLT READINGS IDENTIFIED BY AN ASTERISK (\*) ARE FOR BATTERY OPERATION ALL OTHERS ARE FOR AC OPERATION  
 S1 SHOWN IN AC POSITION



IF = 265 KC