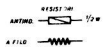
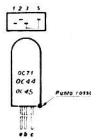
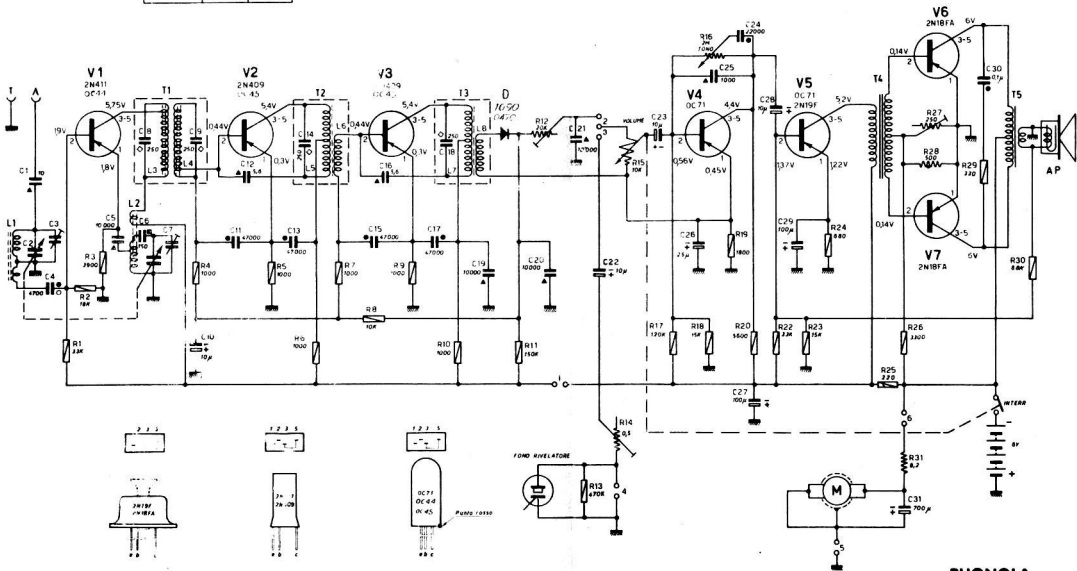


RADIO	● ● ● ●
FOND	○ ○ ○ ○
PCX-UP INCLUSA	● ● ● ●
PCX-UP ESCLUSO	○ ○ ○ ○

● CONTATTO INCHIUSO

○ CONTATTO APERTO



- CONDENSATORI
- CARTA ● 250V
  - 457A ○ 100V
  - NICA ○ 500V
  - STYROLUX ○ 125V
  - CERAMICA ▲ 500V

TENSIONI MISURATE RISPETTO A MASSA CON VOLTIMETRO A BILANCIA  
SENZA SEGNALI RF IN ANTENNA

PHONOLA

T 702