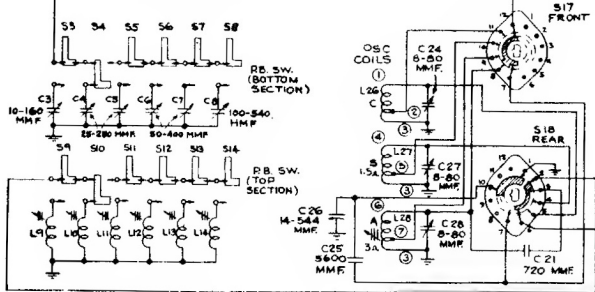


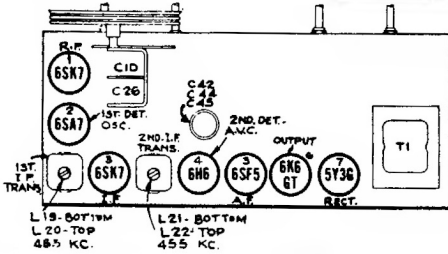
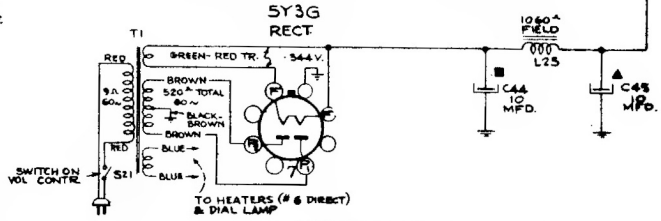
RANGE SWITCH VIEWED FROM FRONT AND SHOWN IN F.S. (MAX. COUNTER-CLOCKWISE) POSITION.



CATHODE CURRENTS

(1) 6SK7	15.7 MA.
(2) 6SA7	9.0 MA.
(3) 6SK7	15.2 MA.
(5) 65F5	0.4 MA.
(6) 6K6-GT	40.0 MA.
TOTAL RECTIFIED	80.3 MA.

VOLTAGES SHOULD HOLD WITHIN $\pm 20\%$ WITH 117V. A.C. SUPPLY.
 * MEASURED WITH CHANALYST OR VOLTOHMYST



RCA Victor

MODEL 17K

