

RCA VICTOR

2B400 Series

Chassis No. RC-1114

2 B 400
Grey

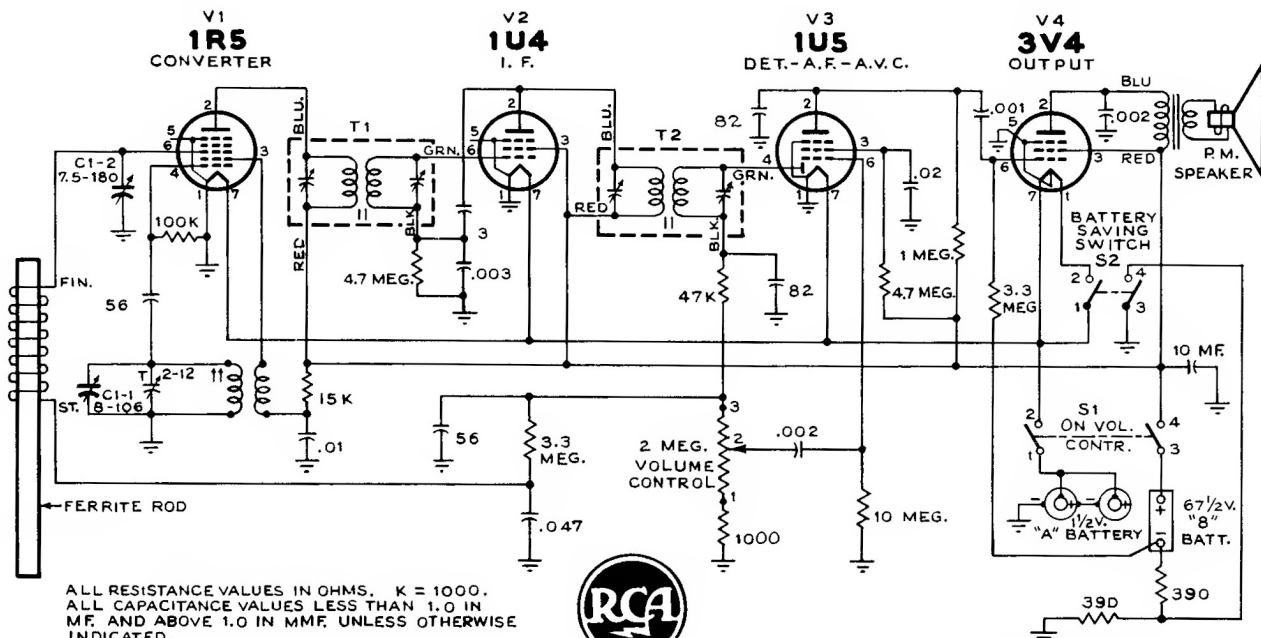
2 B 401
Black

2 B 402
Ivory

2 B 403
Green

2 B 404
Tan

2 B 405
Red



ALL RESISTANCE VALUES IN OHMS. K = 1000.
ALL CAPACITANCE VALUES LESS THAN 1.0 IN MF. AND ABOVE 1.0 IN MMF. UNLESS OTHERWISE INDICATED.



Replacement of Component Parts

I. To Remove Back Cover

- Depress top of case midway between the handle supports, until the top end of the back separates from the main case.
- Pull the back cover back and up, thereby unhooking the retaining lugs in the bottom of the main case.

II. To Replace Batteries

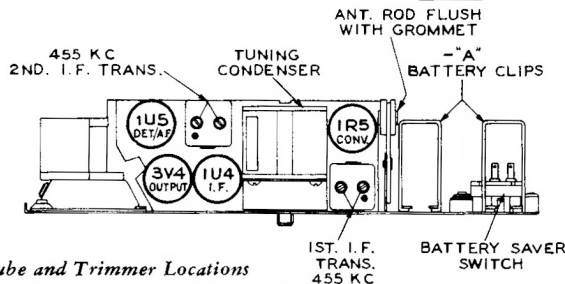
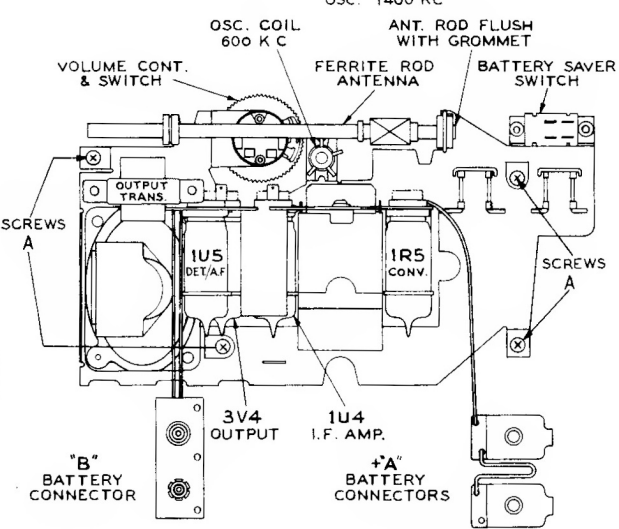
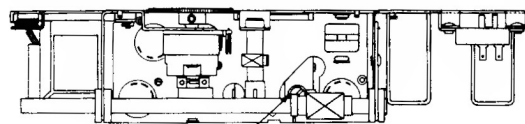
- Remove back cover.
 - Remove both "A" and "B" batteries. The "B" battery snap fasteners can best be removed by inserting a screwdriver under the snap fastener strip and prying upward.
 - The "A" batteries can easily be removed by pulling up on the spring wire clips.
- Note: The "A" and "B" batteries have approximately equal life and therefore it is advisable to replace all batteries at one time.

III. To Remove Chassis

- Remove dial knob by grasping with finger tips at two sides and pulling.
- Remove back cover.
- Remove batteries.
- Remove "A+" contacts by squeezing against case and sliding out of slots in case.
- Remove the four screws "A."
- Grasp the assembly by the speaker and pull the bottom end down and outward to clear the volume control knob.

IV. To Replace Chassis

- Observe the position of the battery save button extension in relation to the "battery-save" switch. This extension must engage with the center of the battery save switch.
- Replace in reverse order to that given for chassis removal.



Tube and Trimmer Locations