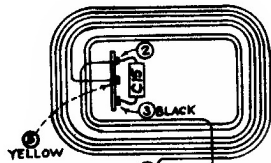


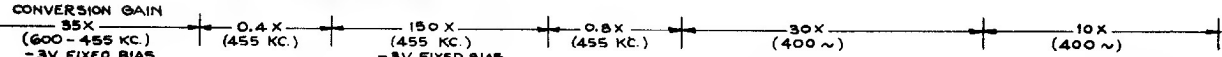
# RCA Victor

## 45X18

Chassis No. RC-541-C



BOTTOM VIEW OF TUBE SOCKETS

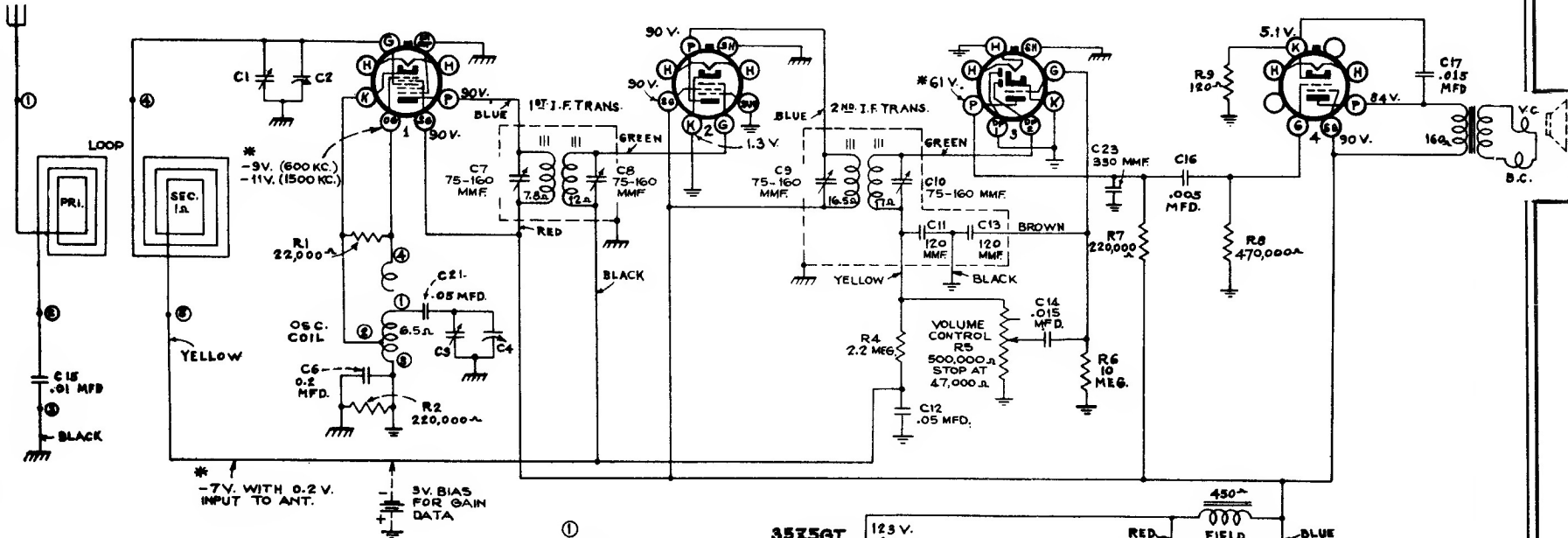


CONVERSION GAIN  
35X  
(600-455 KC.)  
-3V. FIXED BIAS  
12SA7  
1ST DET.-OSC.

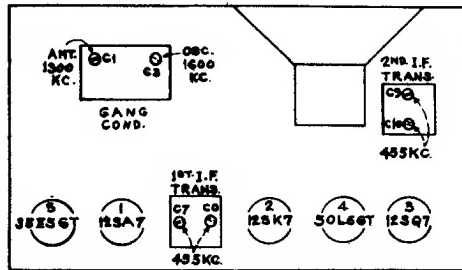
150X  
(455 KC.)  
-3V. FIXED BIAS  
12SK7  
I.F.

0.8X  
(455 KC.)  
12SQ7  
2ND DET.-AF.-AVC.

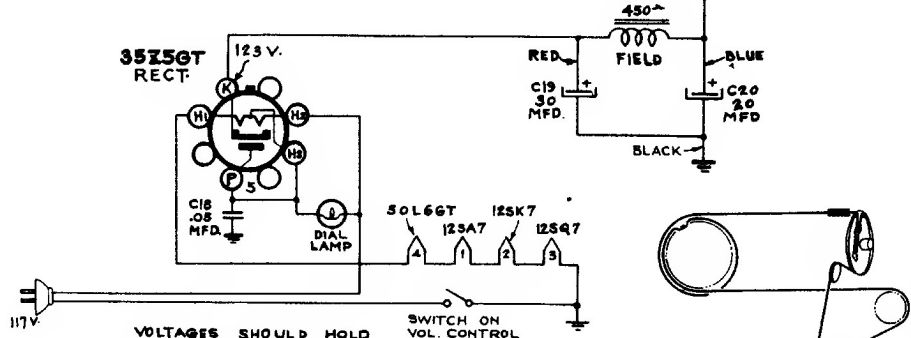
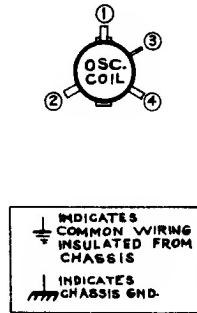
10X  
(400 ~)  
50L6GT  
OUTPUT



\* -7V. WITH 0.2 V. INPUT TO ANT.  
-3V. BIAS FOR GAIN DATA



TUBE TRIMMER LOCATIONS



VOLTAGES SHOULD HOLD WITHIN  $\pm 20\%$  WITH 117V. A.C. SUPPLY.

\* MEASURED WITH CHANALYST OR VOLTOHMYST.

Drive Cord Detail

