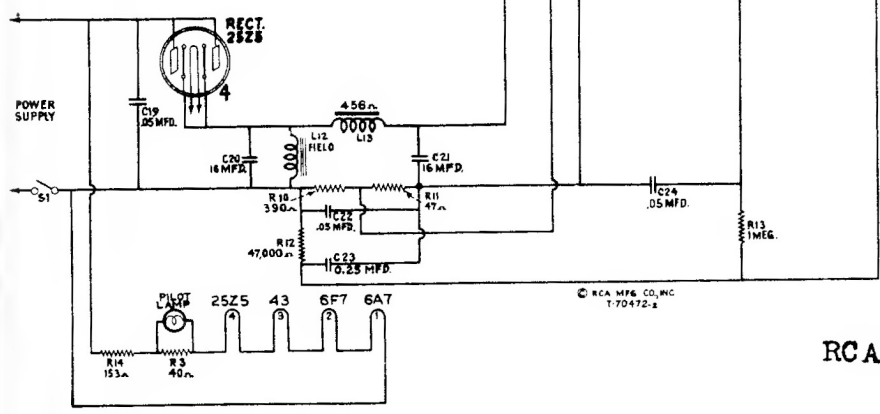


I.F. 460 KC.

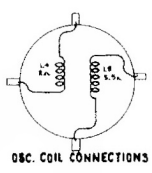
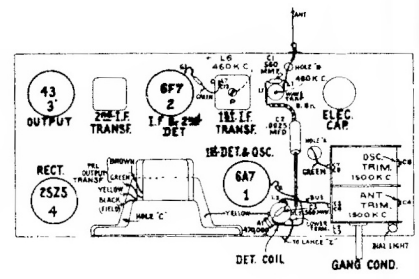
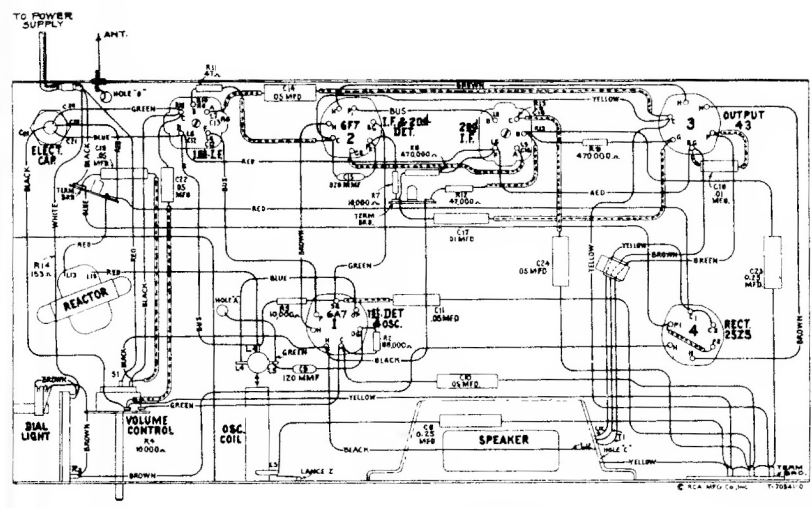


**SERVICE HINTS**

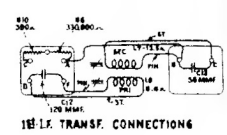
- (1) Excessive hum or distortion is sometimes caused by pilot lamp socket short-circuiting to chassis.

RCA Models: 4X, 4X3, 4X4

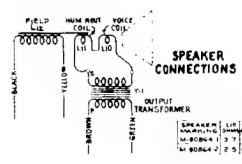
*Schematic Circuit Diagram*



OSC. COIL CONNECTIONS

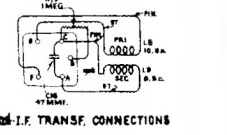


1st. I.F. TRANSF. CONNECTIONS

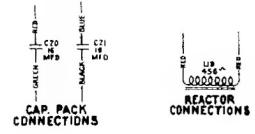


SPEAKER CONNECTIONS

DET. COIL CONNECTIONS



2nd. I.F. TRANSF. CONNECTIONS



CAP. PACK CONNECTIONS

REACTOR CONNECTIONS

*Chassis Wiring Diagram, Radiotron, Coil, and Trimmer Locations*