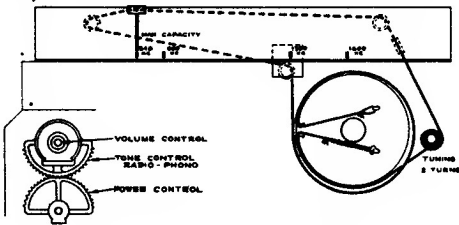


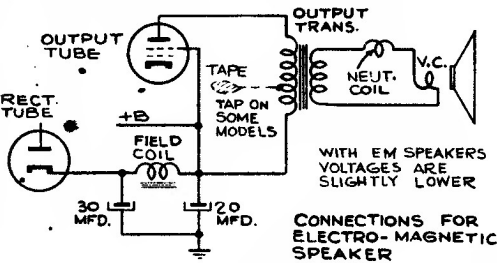
# RCA VICTOR

## 55U, 55AU

Chassis No. RC1017; Mfr. No. 274



**Dial Pointer Adjustment.**—Rotate tuning condenser fully counter-clockwise plates (fully meshed). Adjust indicator pointer to left (max. cap.) mark on dial back plate.

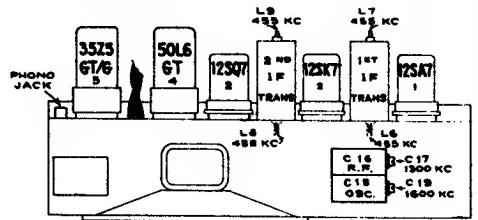


CONNECTIONS FOR ELECTRO-MAGNETIC SPEAKER

**Test Oscillator.**—Connect high side of test oscillator as shown in chart. Connect low side through a .01 mf capacitor to common "—B". Keep the output signal as low as possible to avoid a.v.c. action.

**Output Meter.**—Connect meter across speaker voice coil. Turn volume control clockwise to radio maximum high position (3) for alignment.

Steps	Connect the high side of test-oscillator to—	Tune test-osc. to—	Turn radio dial to—	Adjust the following for max. peak output
1	I.F. grid, in series with .01 mfd.	455 kc	Quiet point 1,600 kc end of dial	L8 and L9 2nd I.F. transformer
2	1st Det. grid in series with .01 mfd.			L6 and L7 1st I.F. transformer
<b>NOTE.—ANTENNA LOOP MUST BE IN CABINET</b>				
3	Antenna terminal in series with 220 mmfd.	1600 kc	Gang at minimum	C19 (osc.)
4	Radiated signal 1300 kc		Signal Frequency	C17 (ant.)
5	Repeat steps 3 and 4.			



**Power Supply.**—Although this model employs an ac-dc chassis, it is not suitable for use on d.c., as this would damage the motor. Reversal of plug in outlet receptacle may reduce hum.

### 12SA7 CONVERTER

### 12SK7 I.F. AMPLIFIER

### 12SQ7 2ND DET.-AVC-AUDIO

### 50L6-GT OUTPUT

