

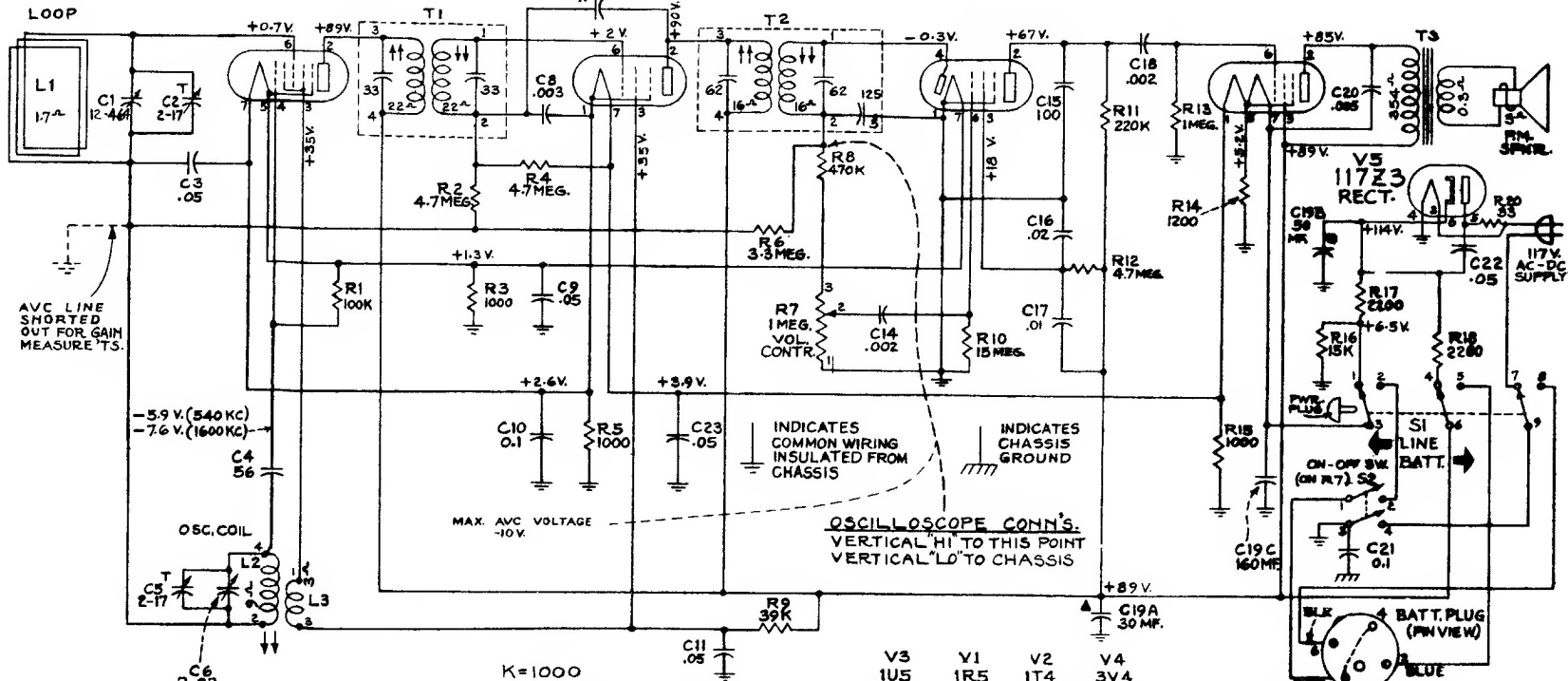
APPROX. GAIN
DATA USING
CHANALYST

V1
1R5
1ST DET.-OSC.

V2
1T4
I.F.

V3
1U5
DET.-A.V.C.-A.F.

V4
3V4
OUTPUT



AVC LINE
SHORTED
OUT FOR GAIN
MEASUREMENTS.

-5.9 V. (540 KC)
-7.6 V. (1600 KC)

OSC. COIL

C6
7-97

MAX. AVC VOLTAGE
-10V.

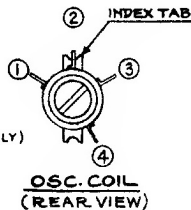
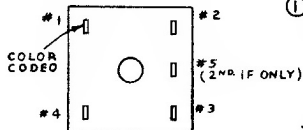
INDICATES
COMMON WIRING
INSULATED FROM
CHASSIS

INDICATES
CHASSIS
GROUND

OSCILLOSCOPE CONN'S.
VERTICAL "HI" TO THIS POINT
VERTICAL "LO" TO CHASSIS

K=1000

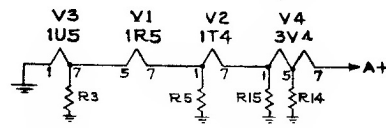
IF TRANS.
970441-3 1/2T. IF
970441-4 2/2T. IF
BOTTOM VIEW



TUBE CURRENTS (AC. OPER.)

	PLATE	SCREEN
1R5	.11 MA.	1.3 MA.
1T4	.73 MA.	.26 MA.
1U5	.09 MA.	.014 MA.
3V4	7.1 MA.	1.5 MA.
117Z3	60 MA.	

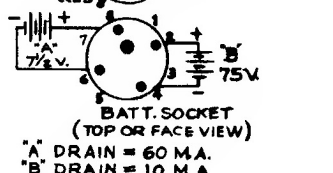
ON BATTERY OPERATION
TUBE CURRENTS ARE APPROX.
20% LOWER. (117Z3 RECTIFIER
NOT USED)



VOLTAGES MEASURED TO RECEIVER
GROUND (-B) WITH CHANALYST OR
VOLTOMYST, AND SHOULD HOLD WITHIN
± 20% WITH 117V. A.C. LINE SUPPLY.

SWITCH "S1" ACTUATED BY LINE PLUG.

ON BATTERY OPERATION "A" VOLTAGES ARE APPROX. 10% HIGHER,
"B" VOLTAGES ARE APPROX. 10% LOWER. (117Z3 RECT. NOT USED)



BATT. SOCKET
(TOP OR FACE VIEW)
"A" DRAIN = 60 MA.
"B" DRAIN = 10 MA.



RCA VICTOR

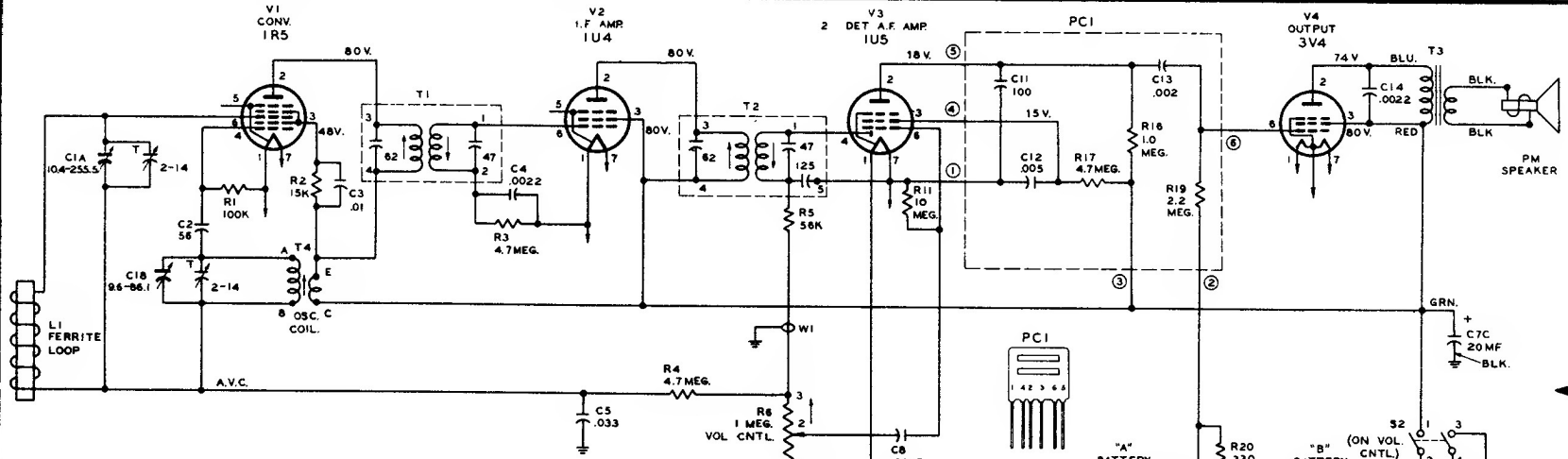
MODEL 8BX5
Chassis No. RC-1059

Frequency Range 540-1,600 kc
Intermediate Frequency 455 kc

RCA VICTOR

MODEL 8-BX-5 Series

Chassis No. RC-1149

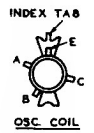


K=1000
 ALL RESISTANCE VALUES IN OHMS AND ALL CAPACITANCE VALUES LESS THAN 1.0 ARE IN MF AND 1.0 & ABOVE ARE INMMF EXCEPT AS INDICATED.
 VOLTAGES MEASURED TO COMMON WIRING WITH "VOLTOHMYST" SHOULD HOLD WITHIN ±20% WITH 117V AC POWER SUPPLY.

6 POLE-2 POSITION SWITCH S1-1 SHOWN FROM TERM END WITH SWITCH SHAFT IN C/CLOCKWISE POSITION*1 (115V. A.C.-D.C.)

POSITION	FUNCTION
1	115V. AC-DC OPERATION
2	BATTERY OPERATION

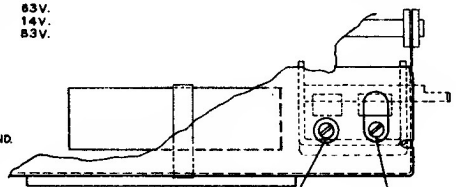
WHEN POWER PLUG CONTACT IS INSERTED AGAINST SWITCH S1-1A LEVER ARM, SWITCH CONTACTS SHOWN (6) MOVE INTO POSITION *2 FOR BATTERY OPERATION. (INNER CONTACTS REMAIN STATIONARY.)



BATTERY OPERATION "B" VOLTAGES

TUBE	PLATE	SCREEN
1R5	83V.	37V.
1U4	63V.	83V.
1U5	15V.	14V.
3V4	81V.	83V.

INDICATES -B WIRING ISOLATED FROM CHASSIS.
 INDICATES CHASSIS GND.



Tube and Trimmer Locations

