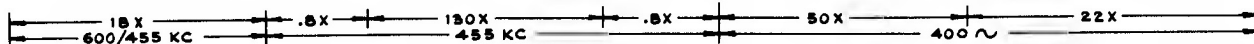
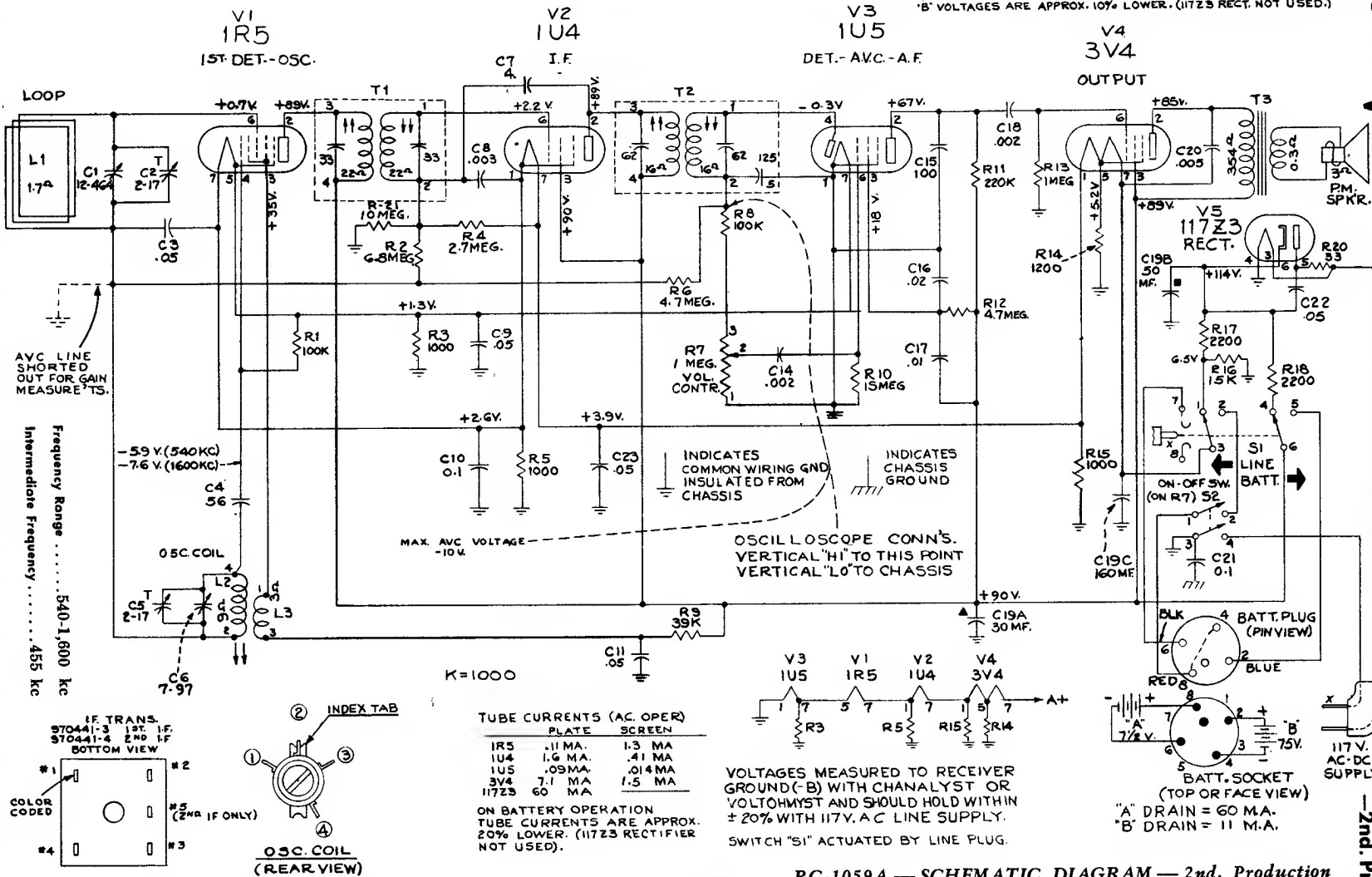


APPROX. GAIN
DATA USING
CHANALYST



ON BATTERY OPERATION 'A' VOLTAGES ARE APPROX. 10% HIGHER
'B' VOLTAGES ARE APPROX. 10% LOWER. (11723 RECT. NOT USED.)

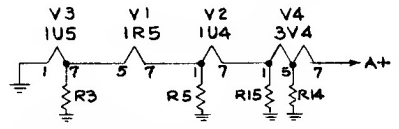
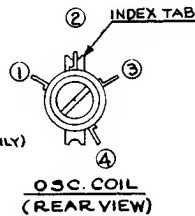
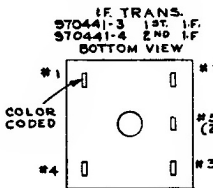


Frequency Range 540-1,800 kc
Intermediate Frequency 455 kc

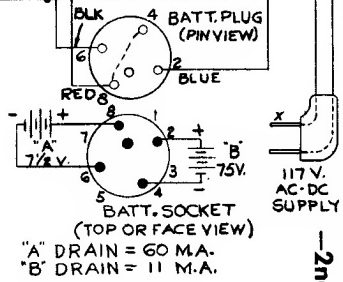
K=1000

TUBE CURRENTS (AC OPER)		
	PLATE	SCREEN
1R5	.11 MA.	1.3 MA
1U4	1.6 MA.	.41 MA
1U5	.09 MA.	.014 MA
3V4	7.1 MA	1.5 MA
117Z3	60 MA	

ON BATTERY OPERATION
TUBE CURRENTS ARE APPROX.
20% LOWER. (11723 RECTIFIER
NOT USED).



VOLTAGES MEASURED TO RECEIVER
GROUND (-B) WITH CHANALYST OR
VOLTOMYST AND SHOULD HOLD WITHIN
± 20% WITH 117V. AC LINE SUPPLY.
SWITCH "S1" ACTUATED BY LINE PLUG.



The position of the battery pack affects the loop inductance. Therefore, when the battery is removed, the loop inductance will change (increase) and the sensitivity will be slightly worse because of improper electrical tracking of the loop circuit with the heterodyne oscillator.



RC-1059A — SCHEMATIC DIAGRAM — 2nd. Production

Model 9BX5, Chassis RC-1059B and -C,
are similar to circuit illustrated.

RCA VICTOR 8BX5, 8BX54, 8BX55 Chassis RC-1059A 2nd. Production