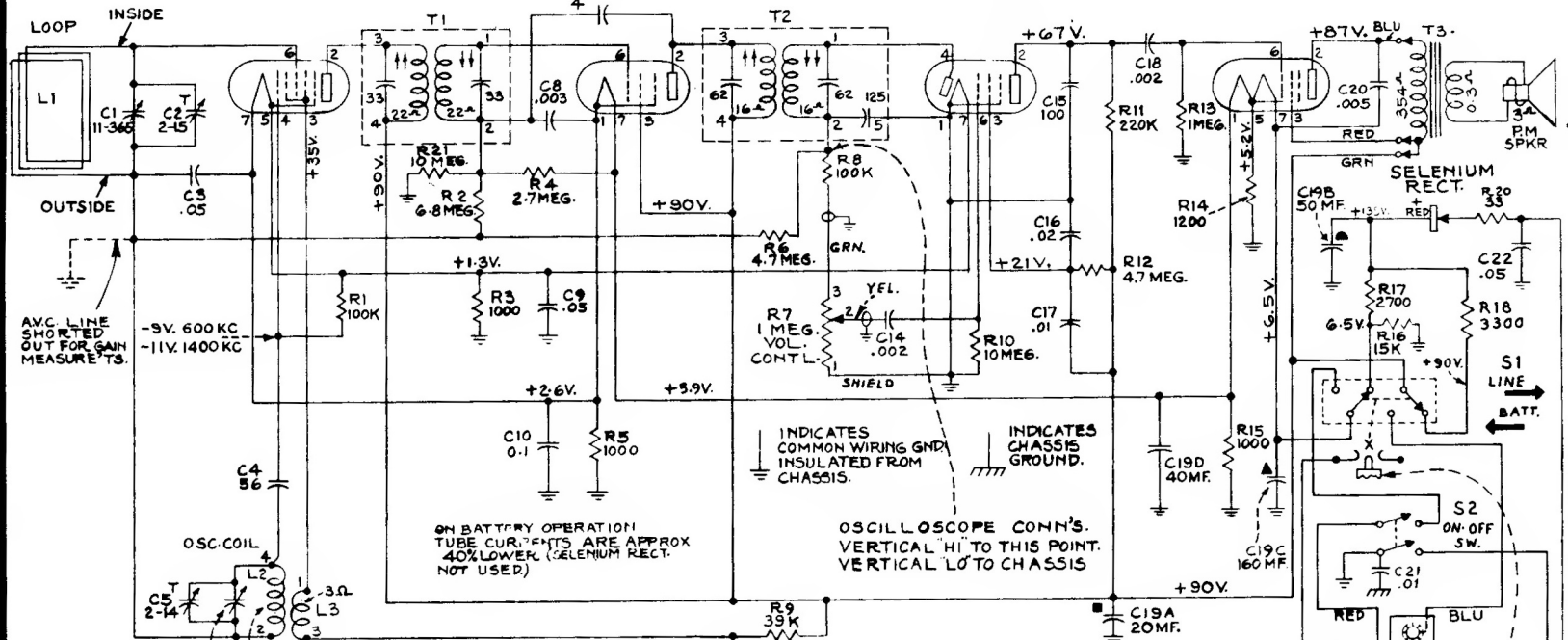


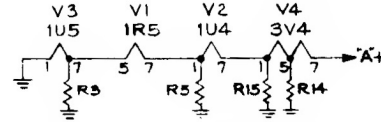
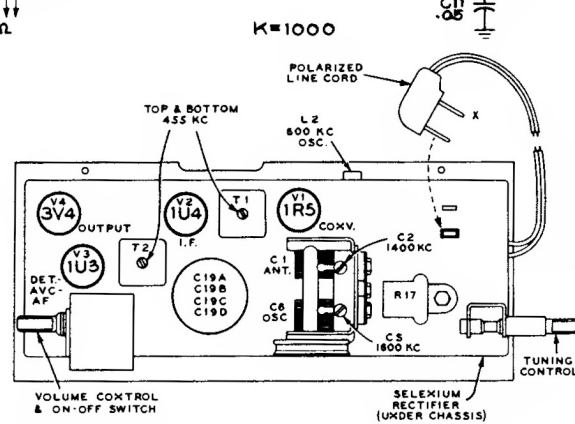
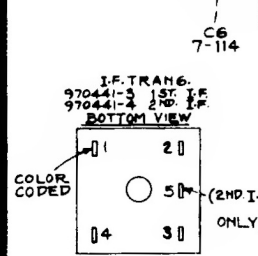
APPROX. GAIN DATA MEASURED WITH CHANALYST



MEASURED ON A.C. OPERATION

ON BATTERY OPERATION TUBE CURRENTS ARE APPROX 40% LOWER. (SELENIUM RECT. NOT USED)

OSCILLOSCOPE CONN'S. VERTICAL HI TO THIS POINT. VERTICAL LO TO CHASSIS



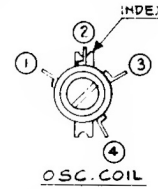
VOLTAGES MEASURED TO COMMON WIRING (-B) WITH CHANALYST OR VOLTOHMYST AND SHOULD HOLD WITHIN ± 20% WITH 115V. AC LINE SUPPLY. SWITCH 'S1' ACTUATED BY LINE PLUG.

"A" DRAIN = 60 M.A. LINE CORD
"B" DRAIN = 10 M.A.

ON BATTERY OPERATION "A" VOLTAGES ARE APPROX 10% HIGHER
"B" VOLTAGES ARE APPROX 20% LOWER. (SEL. RECT. NOT USED)

TUBE CURRENTS (AC OPER.)

TUBE	PLATE	SCREEN
1R5	47 M.A.	1.42 M.A.
1U4	1.43 M.A.	.45 M.A.
1U5	.09 M.A.	.014 M.A.
3V4	7.5 M.A.	2.1 M.A.



RCA VICTOR

MODEL 9BX56

Chassis No. RC-1068

