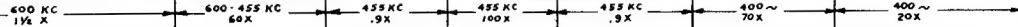


APPROX. GAIN DATA
WITH 3V. FIXED BIAS

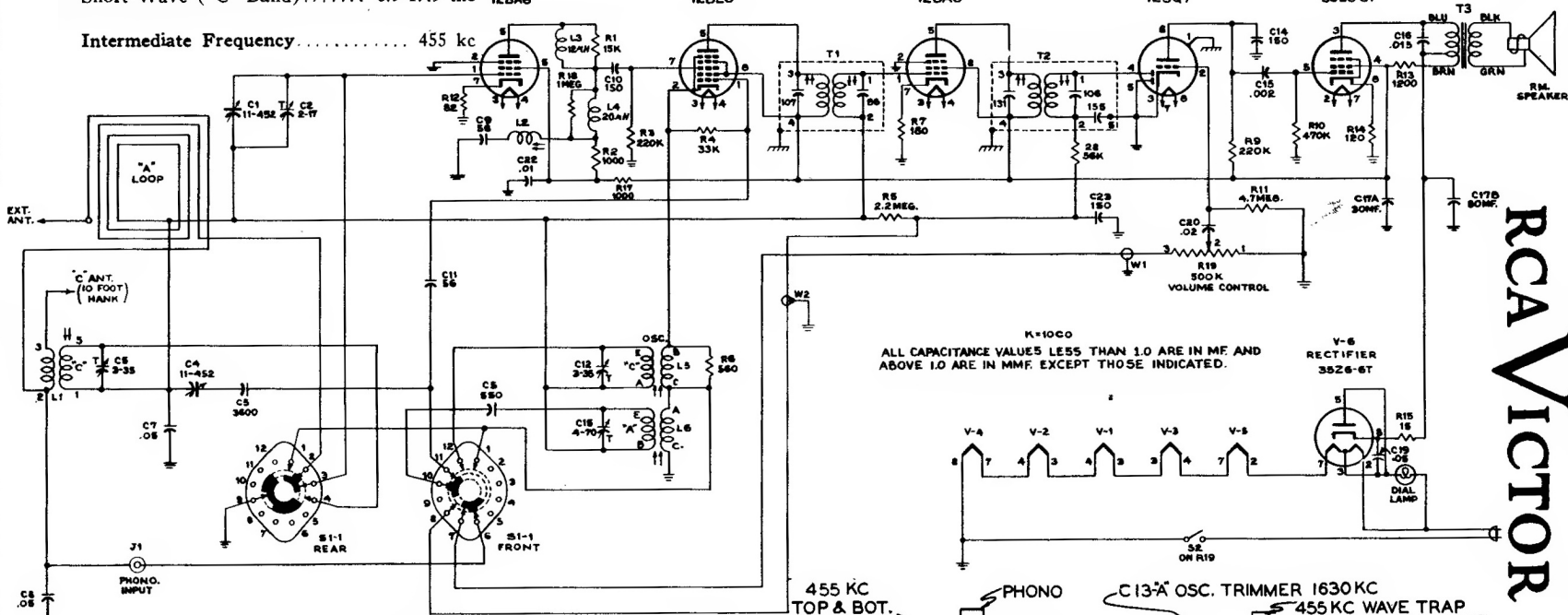


Tuning Ranges

Standard Broadcast ("A" Band) 540-1600 kc
Short Wave ("C" Band) 5.9-17.9 mc

V-1 R.F. 12BA6
V-2 CONVERTER 12BE6
V-3 L.F. 12BA6
V-4 2ND DET.-A.F.-A.M.C. 12SQ7
V-5 OUTPUT 35L6-GT

Intermediate Frequency 455 kc

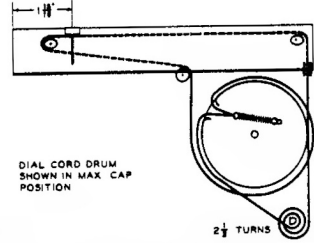


K=1000
ALL CAPACITANCE VALUES LESS THAN 1.0 ARE IN MF AND ABOVE 1.0 ARE IN MMF. EXCEPT THOSE INDICATED.

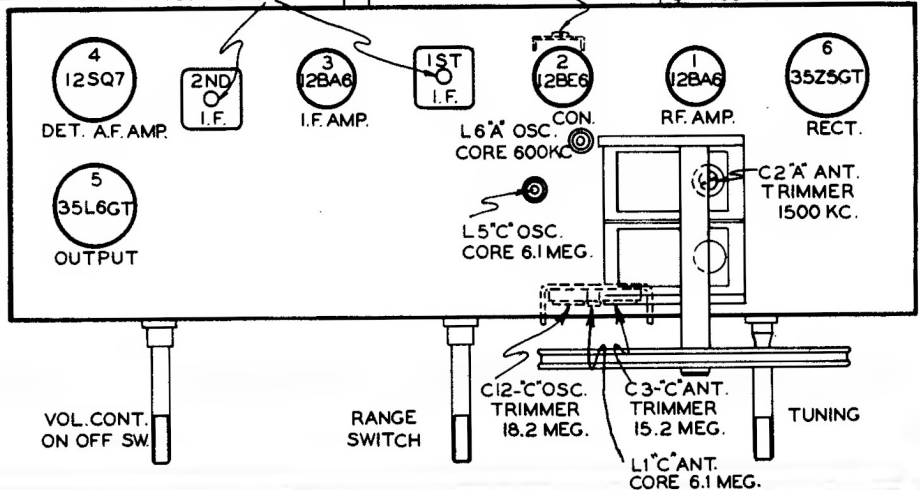
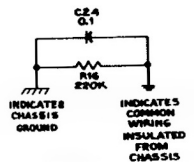
FRONT AND REAR SECTION OF 51-1 VIEWED FROM FRONT WITH THE CONTROL SHAFT IN EXTREME C/CLOCKWISE POSITION *1 (PHONO).

51-1 SEQUENCE

POS.	FUNCTION
1	PHONO.
2	"A" BAND
3	"C" BAND



Dial Drive Mechanism



RCA Victor

MODELS 9X651, 9X652
Chassis No. RC-1085 RC-1085A