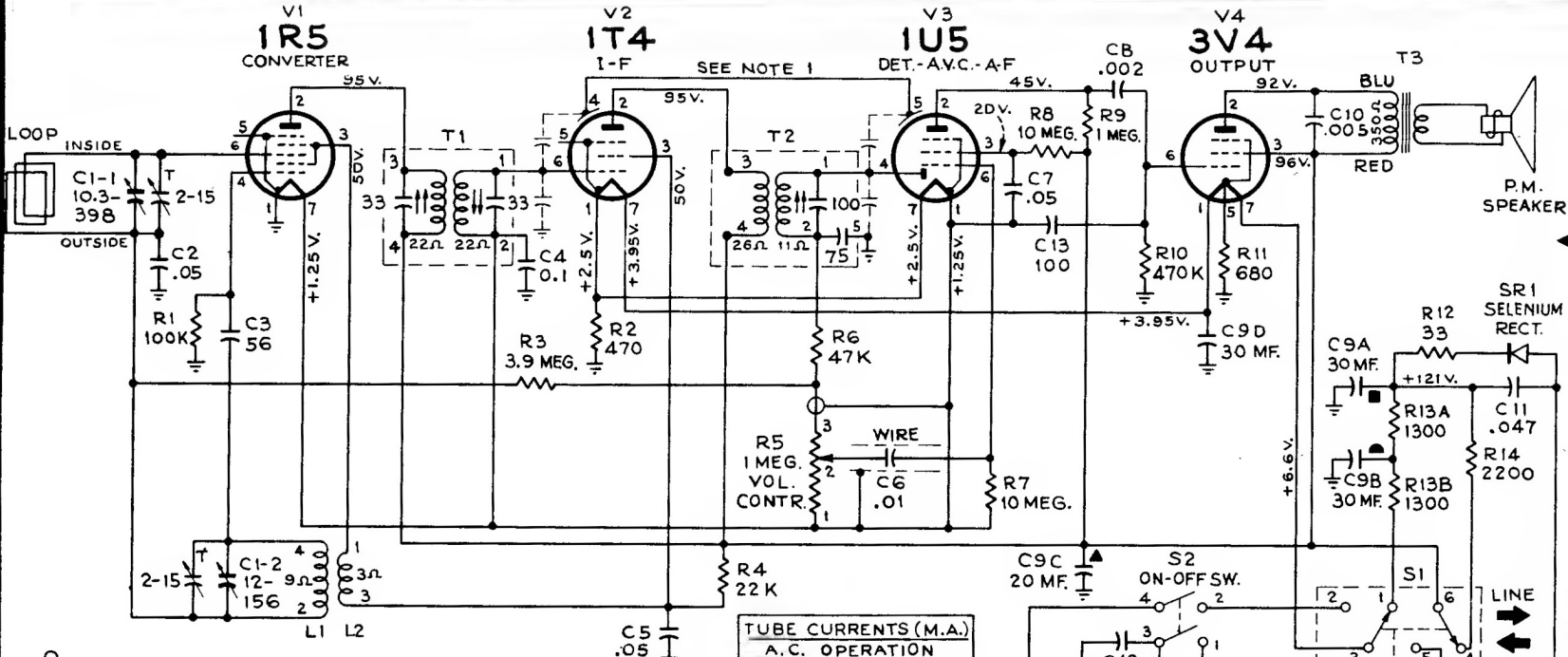


RCA VICTOR MODEL BX55

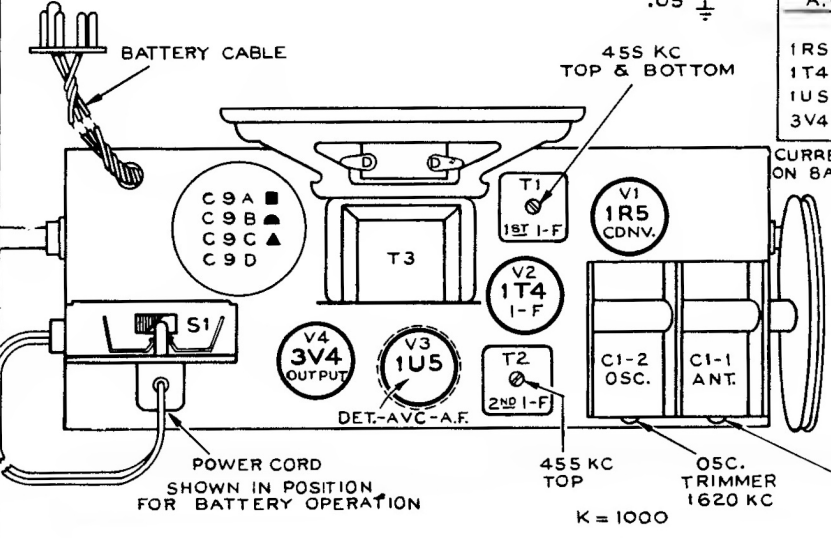
Chassis No. RC-1088



TUBE CURRENTS (M.A.)

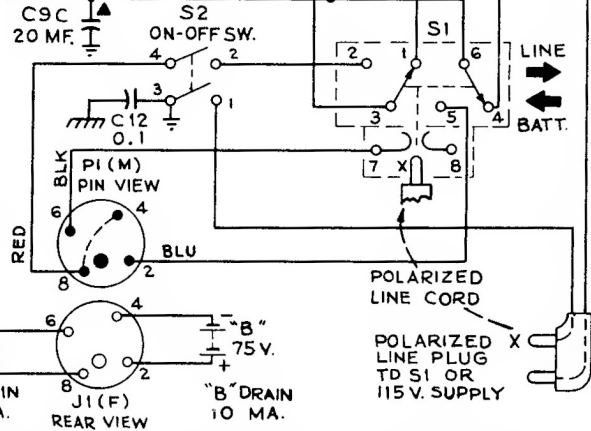
	A.C. OPERATION	
	PLATE	S.GRID
1R5	1.18	2.0
1T4	.96	.35
1U5	.05	.01
3V4	8.45	1.82

CURRENTS SLIGHTLY LOWER ON BATTERY OPERATION.



Tube and Trimmer Locations

SI ACTUATED BY LINE PLUG.



ON BATTERY OPERATION "A" VOLTAGES ARE APPROX. 10% HIGHER. "B" VOLTAGES ARE APPROX. 20% LOWER. (SEL. RECT. NOT USED)

NOTE 1 - THE LEAD CONNECTING V2-4 AND V3-5 IS A COUPLING LINK TO PROVIDE CIRCUIT CAPACITY INDICATED BY DOTTED LINES.

INDICATES COMMON WIRING FROM CHASSIS
 INDICATES CHASSIS GROUND
 VOLTAGES MEASURED TO COMMON WIRING WITH "VOLTOHMYST" SHOULD HOLD WITHIN ±20% WITH 115 V.A.C. POWER SUPPLY.

K = 1000

455 KC TOP & BOTTOM
 455 KC TOP
 OSC. TRIMMER 1620 KC
 ANTENNA TRIMMER 1300 KC