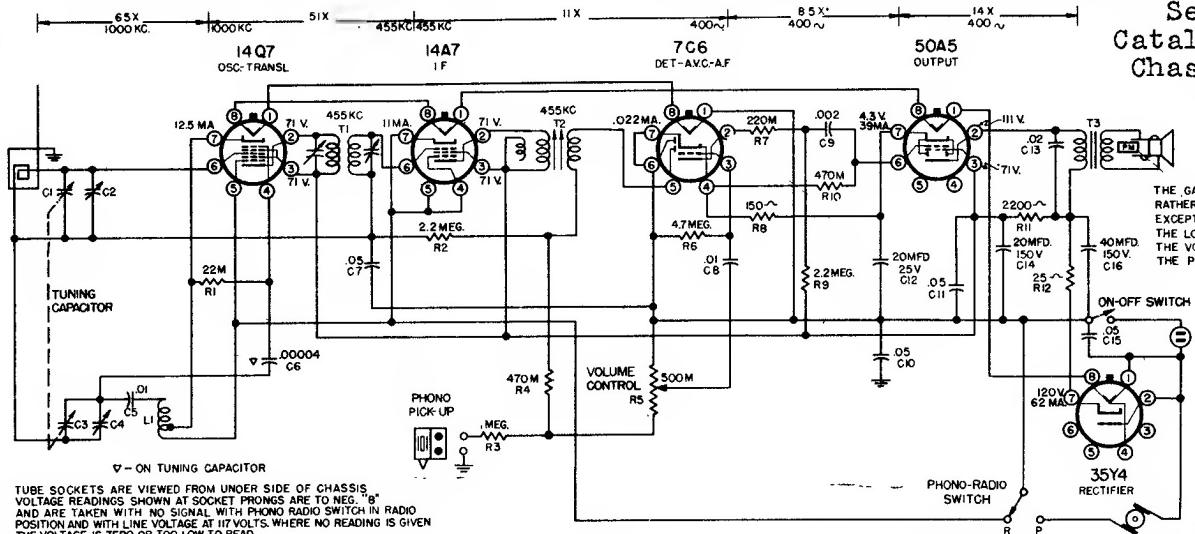


\* - PART OF T2

TUBE SOCKETS ARE VIEWED FROM UNDER SIDE OF CHASSIS. VOLTAGE READINGS SHOWN AT SOCKET PRONGS ARE TO NEG. "B", AND ARE TAKEN WITH NO SIGNAL, WITH PHONO-RADIO SWITCH IN RADIO POSITION, AND WITH LINE VOLTAGE AT 117 VOLTS. WHERE NO READING IS GIVEN THE VOLTAGE IS ZERO OR TOO LOW TO READ

THE GAIN PER STAGE VALUES AS NOTED ABOVE ARE APPROXIMATE VALUES FOR AN AVERAGE STAGE, RATHER THAN AN ABSOLUTE VALUE. A 01 MFD DUMMY IS USED FOR ALL MEASUREMENTS EXCEPT FOR THE ANTENNA WHERE A 200 MMFD DUMMY IS USED. INPUT SHALL BE KEPT AT THE LOWEST LEVEL NECESSARY TO MAINTAIN A STANDARD OUTPUT OF 50 MILLIWATTS WITH THE VOLUME CONTROL FULLY ON

Sears, Roebuck & Co.  
Catalog Nos. 8083, 8084, 7080, 8101  
Chassis 101.809-1A, -1B, -2, -3C



THE GAIN PER STAGE VALUES AS NOTED ABOVE ARE APPROXIMATE FOR AN AVERAGE STAGE, RATHER THAN AN ABSOLUTE VALUE. A 01 MFD DUMMY IS USED FOR ALL MEASUREMENTS EXCEPT FOR THE ANTENNA WHERE A 200 MMFD DUMMY IS USED. INPUT SHALL BE KEPT AT THE LOWEST LEVEL NECESSARY TO MAINTAIN A STANDARD OUTPUT OF 50 MILLIWATTS WITH THE VOLUME CONTROL FULLY ON. NOTE: THE TYPE OF EQUIPMENT USED, THE HANDLING OF THE PROBES THE ACCURACY OF ALIGNMENT, ETC. CAN AFFECT THE MEASUREMENTS.

Sears, Roebuck & Co.  
Catalog No. 8070  
Chassis 101.817-2A