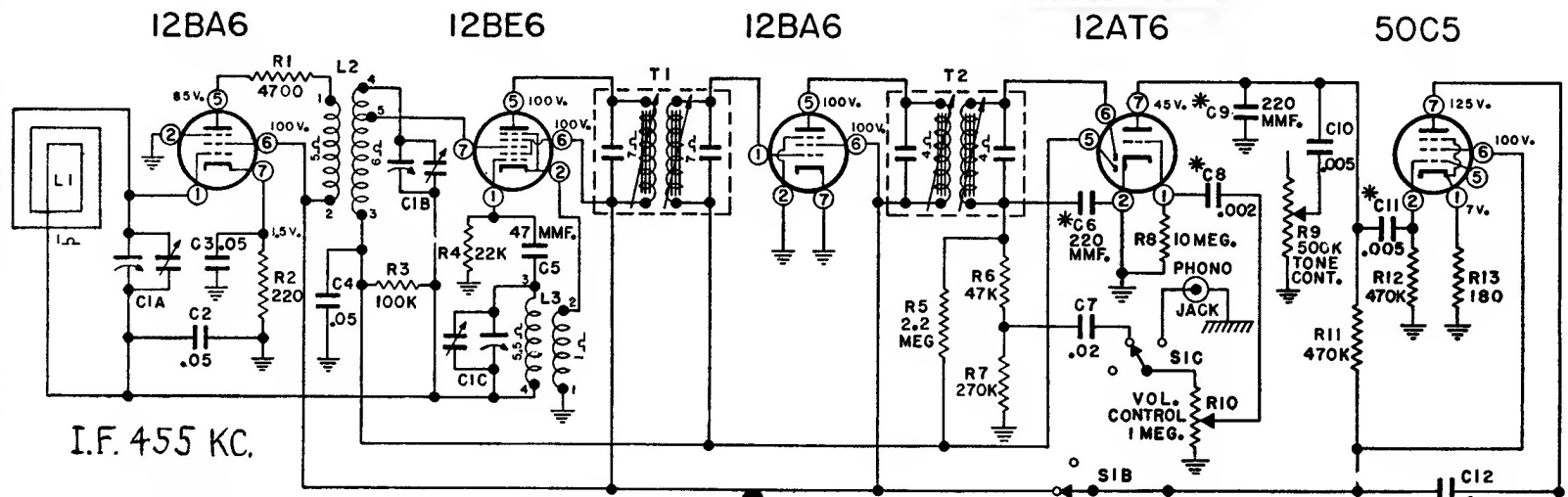


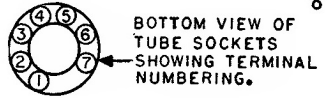
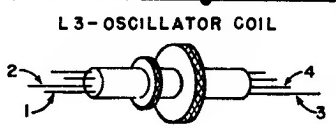
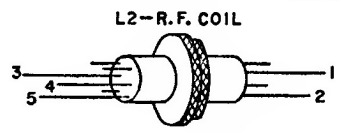
Silver-tone

Sears, Roebuck & Co.

Set No. 1017
Chassis 528.210



I.F. 455 KC.

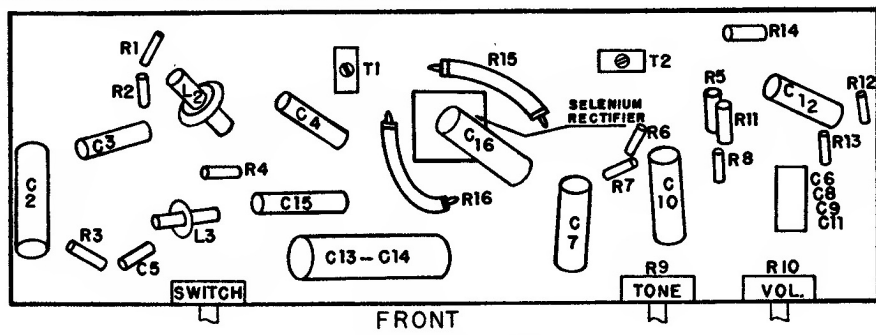
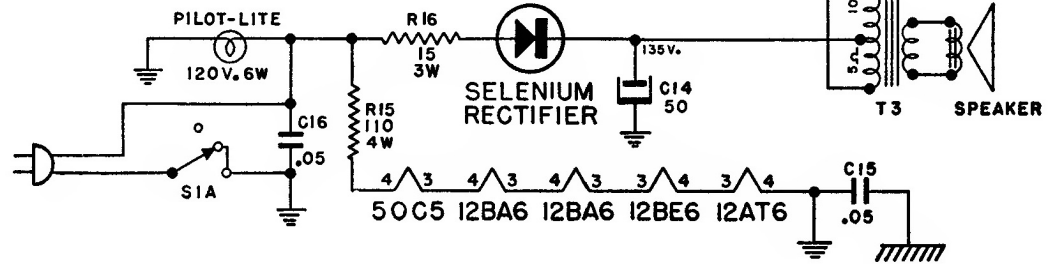


NOTES
VALUES OF CAPACITORS IN MFD. UNLESS OTHERWISE SPECIFIED.

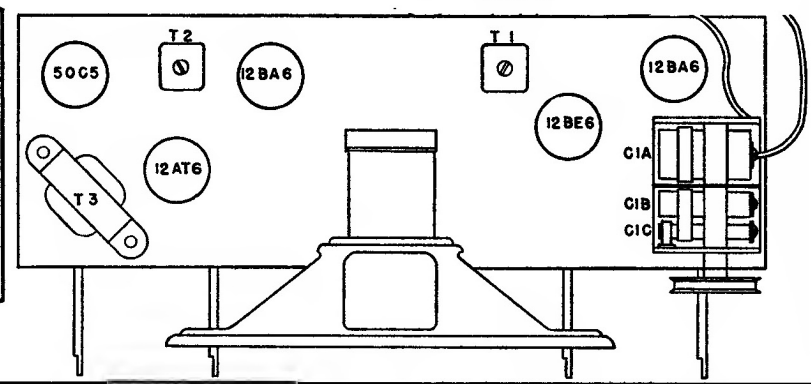
ALL RESISTORS 1/2 WATT UNLESS OTHERWISE SPECIFIED.

(*) THESE CAPACITORS ARE IN CERAMIC UNIT PART NO. T17-104.

VOLTAGES MEASURED FROM POINT INDICATED TO COMMON GROUND WITH 20,000 OHM/VOLT VOLTMETER, RADIO-PHONO SWITCH IN RADIO POSITION, LINE VOLTAGE SET AT 117 V.A.C.



FRONT CHASSIS BOTTOM VIEW



VOLUME CONTROL TONE CONTROL OFF RADIO & PHONO SW. TUNING SHAFT