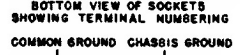
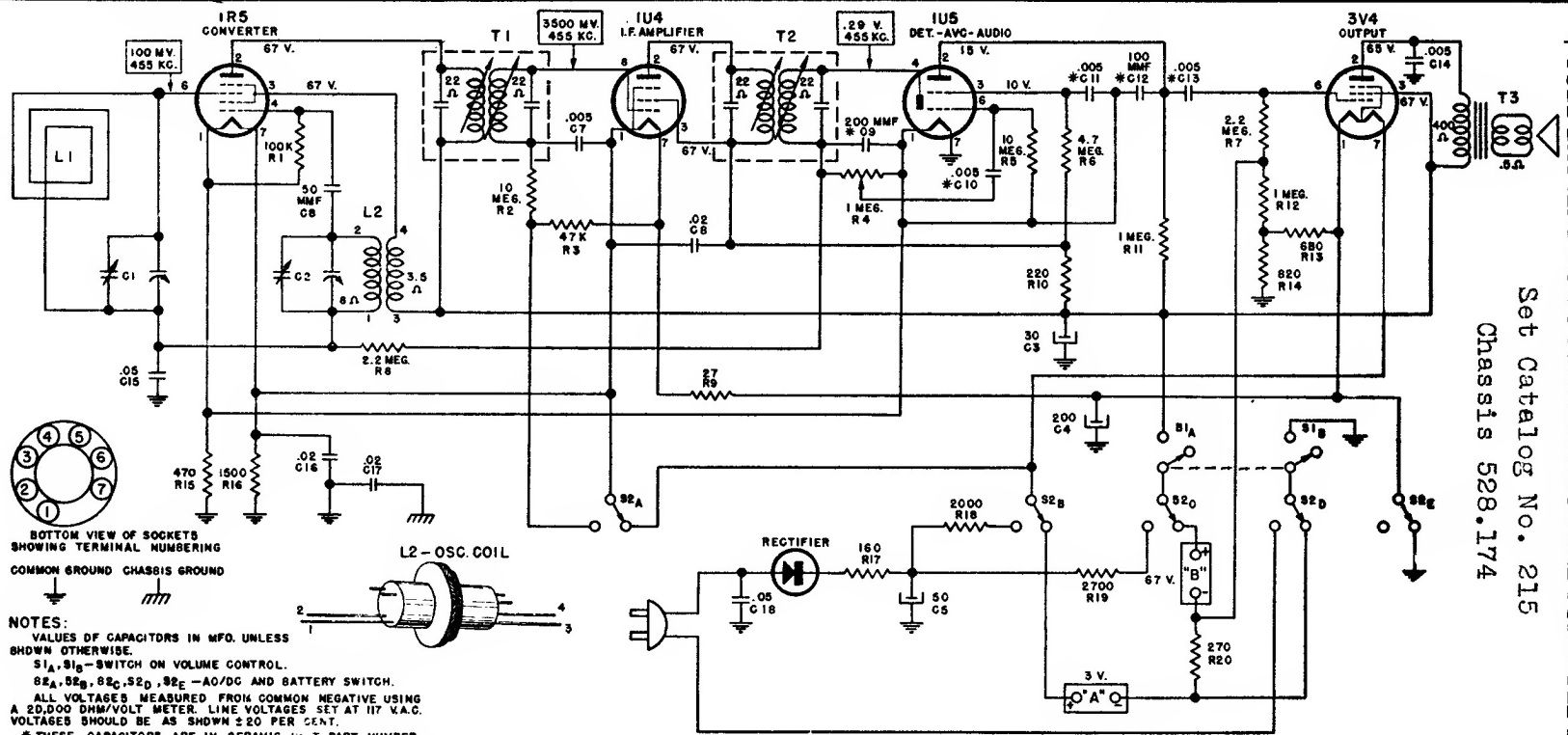


Silverstone

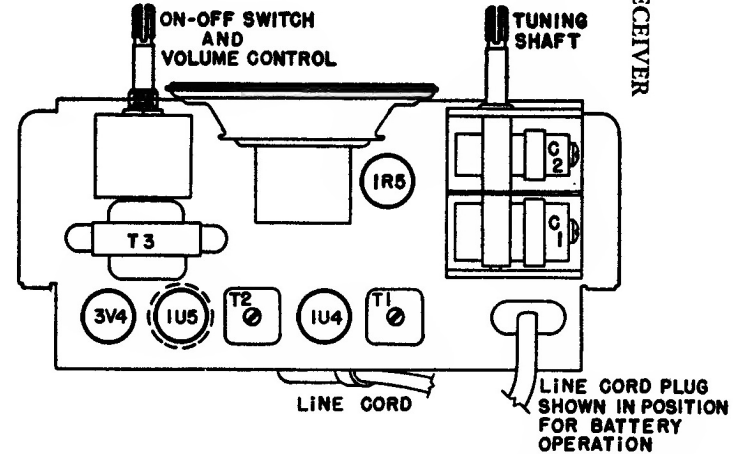
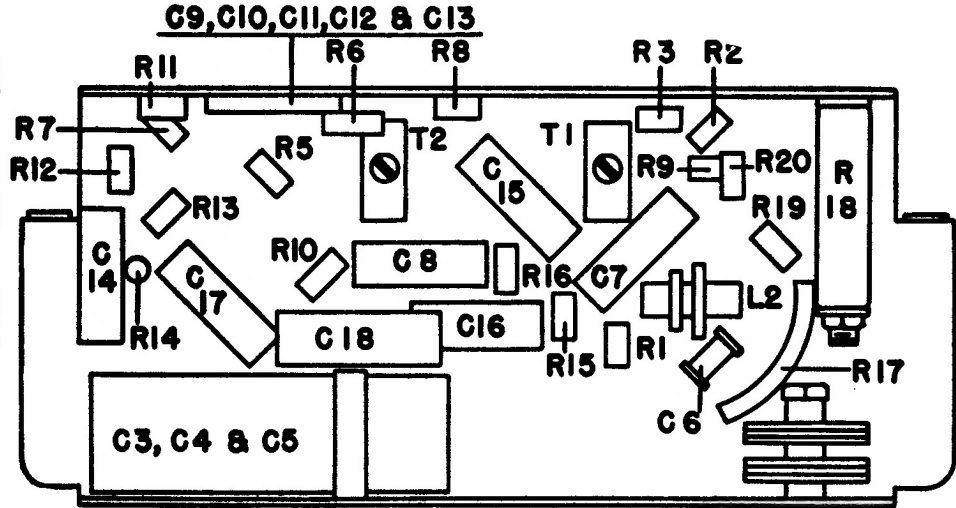
4 TUBE BATTERY-AC-DC SUPERHETERODYNE PORTABLE RECEIVER

Set Catalog No. 215

Chassis 528.174



NOTES:
 VALUES OF CAPACITORS IN MFD. UNLESS SHOWN OTHERWISE.
 S1A, S1B - SWITCH ON VOLUME CONTROL.
 S2A, S2B, S2C, S2D, S2E - AC/DC AND BATTERY SWITCH.
 ALL VOLTAGES MEASURED FROM COMMON NEGATIVE USING A 20,000 OHM/VOLT METER. LINE VOLTAGES SET AT 117 V.A.C. VOLTAGES SHOULD BE AS SHOWN $\pm 2\%$ PER CENT.
 * THESE CAPACITORS ARE IN CERAMIC UNIT PART NUMBER.



LOCATION OF PARTS ON TOP OF CHASSIS