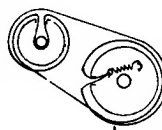
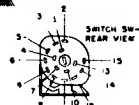
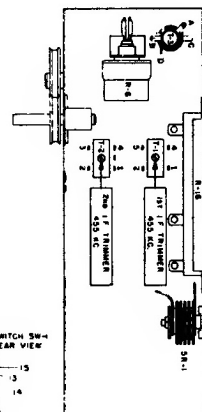


# Sentinel

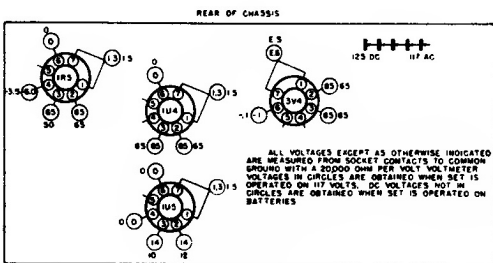
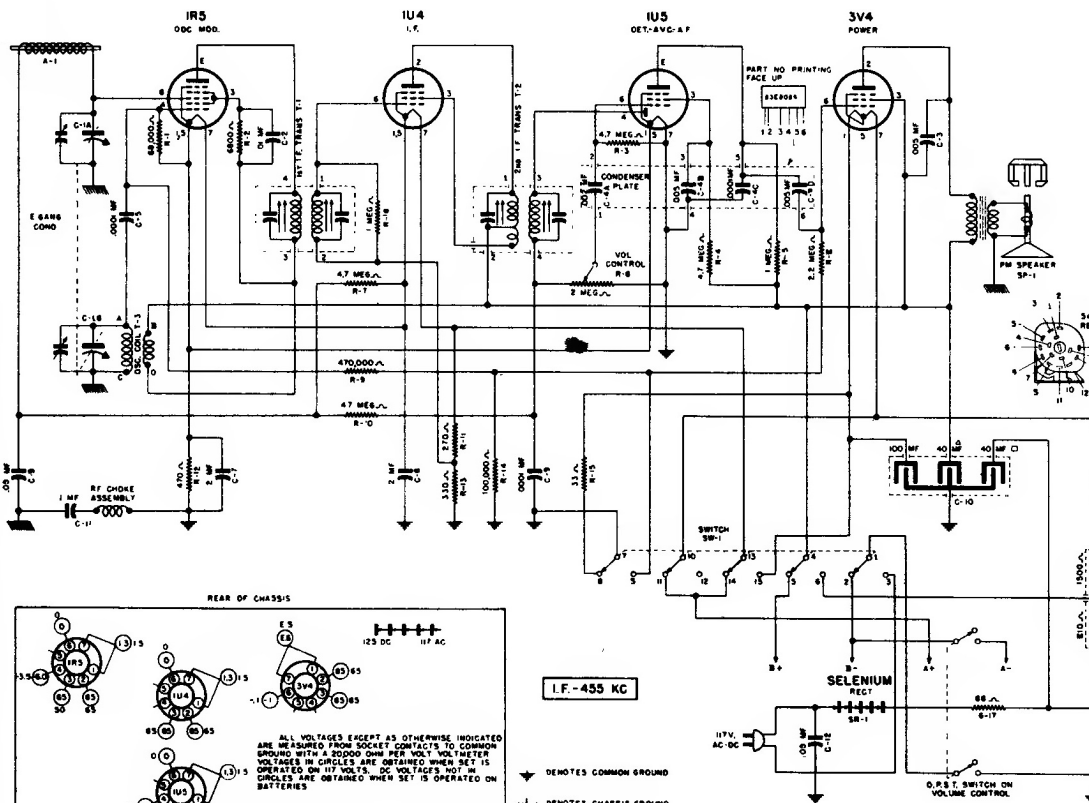
MODELS  
348P  
1U-348P



TUNING COND ASSEMBLY  
TUNING FORK  
CONTACTS  
INSULATING RINGS



SW-1 SWITCH SW-1  
REAR VIEW



REAR OF CHASSIS

VOLTAGE TABLE  
(BOTTOM VIEW OF CHASSIS)

ALL VOLTAGES EXCEPT AS OTHERWISE INDICATED ARE MEASURED FROM SOCKET CONTACTS TO COMMON GROUND WITH A 5000 OHM PER VOLT VOLTMETER. VOLTAGES IN CIRCLES ARE OBTAINED WHEN SET IS OPERATED ON 117 VOLTS. DC VOLTAGES NOT IN CIRCLES ARE OBTAINED WHEN SET IS OPERATED ON BATTERIES.

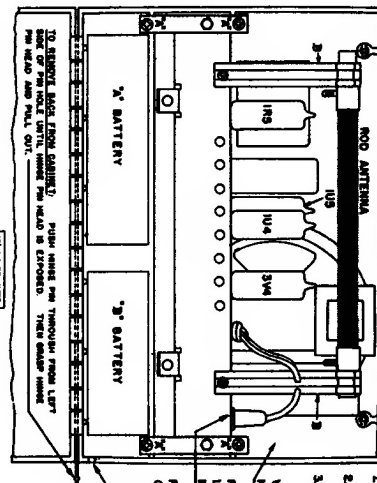
I.F. - 455 KC

⊙ DENOTES COMMON GROUND  
⊕ DENOTES CHASSIS GROUND

## ALIGNMENT PROCEDURE

- Use an accurately calibrated test oscillator with some type of output measuring device.
- WHEN ADJUSTING THE 1660 KC OSCILLATOR TRIMMER** connect the high side of the test oscillator to the connection on the antenna rod closest to the tuning condenser. Connect the low side of the test oscillator to common negative.
- THE 1400 KC ANTENNA TRIMMER** should be adjusted only after all other adjustments have been made. When aligning the 1400 KC Antenna Trimmer, couple test oscillator to receiver by: (1) make loop consisting of five to ten turns of No. 20 to No. 30 size wire, wound on a 2" or 3" form; (2) connect this loop across output of test oscillator; (3) place test oscillator loop near radio antenna. **BE SURE THAT NEITHER LOOP NOR ANTENNA MOVES WHILE ALIGNING.**

**IMPORTANT: WHEN ADJUSTING THE I.F. TRIMMERS USE A THIN NON-METALLIC SCREWDRIVER.**



- TO REMOVE SLATS FROM CABINET:** TURN HANDLE ON TOP OF RADIO FROM LEFT TO RIGHT. THIS HANDLE MUST BE PULLED DOWN AND PULL OUT.
- REMOVE DIAL POINTER FROM FRONT OF CABINET AND SPOB FROM SIDE OF CABINET.
  - DISCONNECT BATTERY LEADS AND REMOVE BATTERIES.
  - LAY CABINET FACE DOWN AND REMOVE THE FOUR SCREWS MARKED "X".
- WIND EXCESS LINE COND AND PLACE IN THIS SPACE.
- FOR BATTERY OPERATION THE AC-DC LINE COND PLUG MUST BE FIRMLY INSERTED IN THIS RECEPTACLE.
- FOR AC-DC OPERATION PLACE LINE COND IN NOTCH AND CLOSE SLAT.

TO REMOVE CHASSIS FROM CABINET: