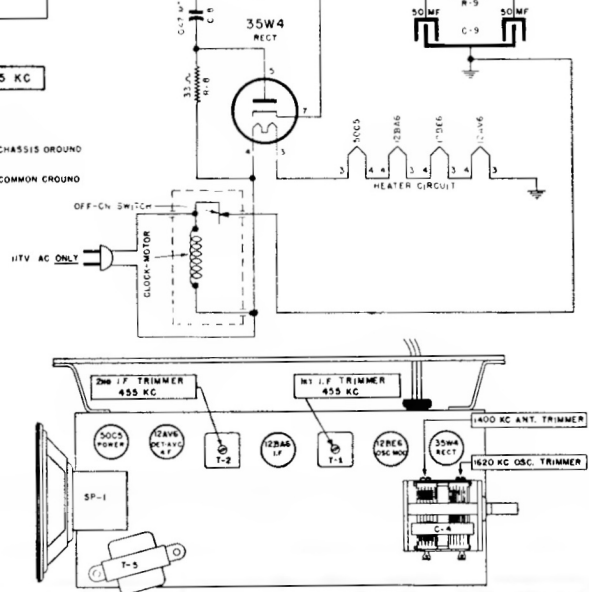
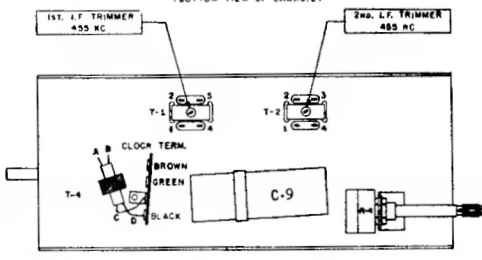


I.F. 455 KC

DENOTES CHASSIS GROUND
 DENOTES COMMON GROUND

VOLTAGE TABLE (BOTTOM VIEW OF CHASSIS)



ALIGNMENT PROCEDURE

When aligning the 1620 KC OSCILLATOR TRIMMER or the 1400 KC ANTENNA TRIMMER, couple test oscillator to receiver loop by: (1) make loop consisting of five to ten turns of NO. 20 to NO. 30 size wire, wound on a 2" to 3" form; (2) connect this loop across output of test oscillator; (3) place test oscillator loop near radio loop.

Steps	Set receiver dial to:	TEST OSCILLATOR			Refer to parts layout diagram for location of trimmers mentioned below:
		Adjust test oscillator frequency to:	Use dummy antenna in series with output of test oscillator consisting of:	Attach output of test oscillator to:	
1	Any point where no interfering signal is received.	455 K.C.	.02 MFD. condenser	High side to antenna stator plates of tuning condenser. Low side to common negative.	Adjust each of the second I.F. transformer trimmers for maximum output—then adjust each of the first I.F. trimmers for maximum output.
2	Exactly 1620 K.C.	Exactly 1620 K.C.	See paragraph above.	See paragraph above.	Adjust 1620 K.C. oscillator trimmer for maximum output.
3	Approx. 1400 K.C.	Approx. 1400 K.C.	See paragraph above.	See paragraph above.	Adjust 1400 K.C. antenna trimmer for maximum output.