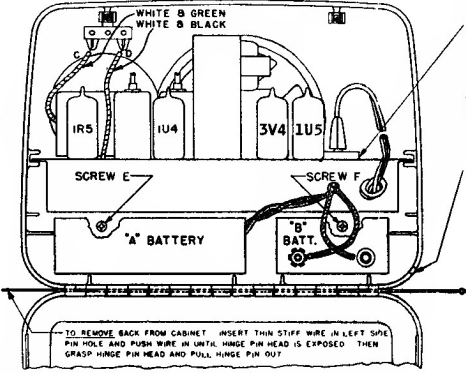


Sentinel

MODELS 335PM,
335PW, 335PI, 335PG, 1U-335PM,
1U-335PW, 1U-335PI, 1U-335PG



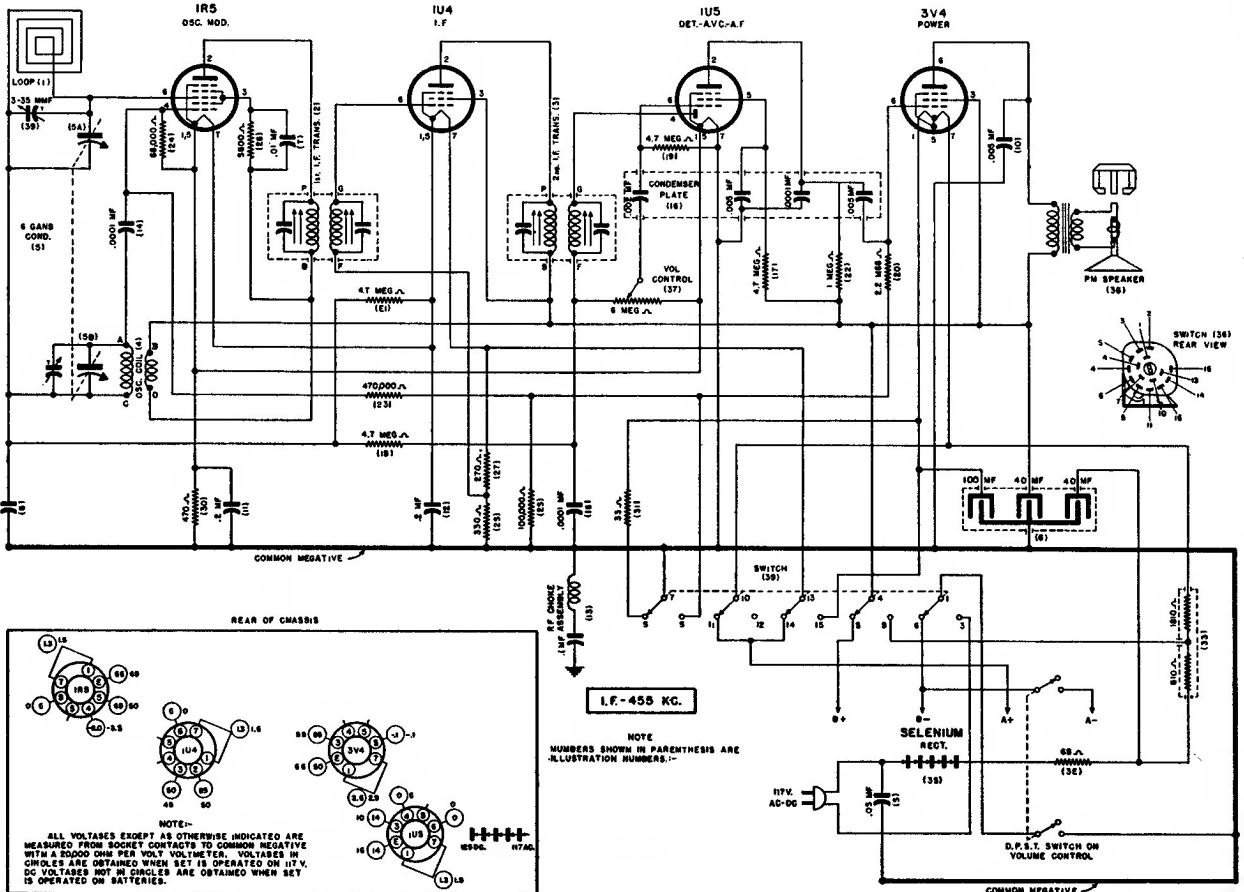
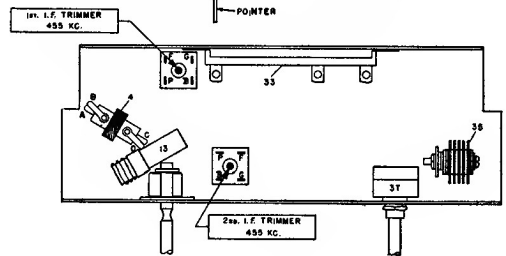
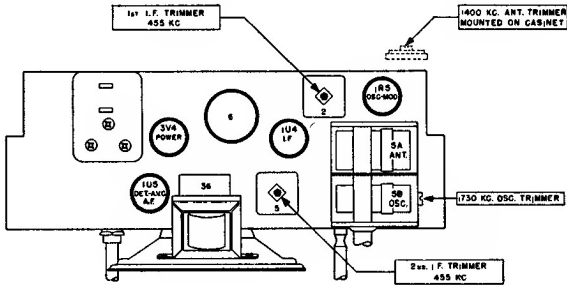
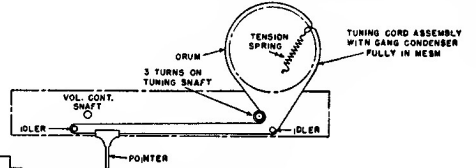
FOR BATTERY OPERATION THE AC LINE CORD PLUG MUST BE FIRMLY INSERTED INTO THIS RECEPTACLE

1. REMOVE BATTERIES
2. UNSOLDER ANTENNA WIRES C AND D.
3. REMOVE SCREWS E AND F.

FOR AC-DC OPERATION, OPEN BACK, PLACE LINE CORD IN NOTCH AND CLOSE BACK

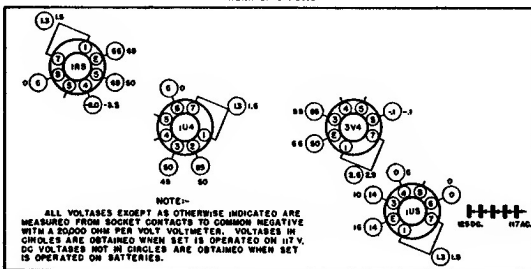
TO REMOVE BACK FROM CABINET INSERT THIN STIFF WIRE IN LEFT SIDE PIN HOLE AND PUSH WIRE IN UNTIL HINGE PIN HEAD IS EXPOSED THEN GRASP HINGE PIN HEAD AND PULL HINGE PIN OUT

TO INSTALL BACK ON CABINET LINE UP CABINET HINGE HOLES WITH BACK HINGE HOLES, INSERT HINGE PIN AND PUSH THROUGH HOLES



I.F. - 455 KC.

NOTE: NUMBERS SHOWN IN PARENTHESIS ARE ILLUSTRATION NUMBERS.



VOLTAGE TABLE (BOTTOM VIEW OF CHASSIS)