

C11 REQUIRED ONLY WITH N-5280 GANG CONDENSER AND N-8912 LOOP ANTENNA

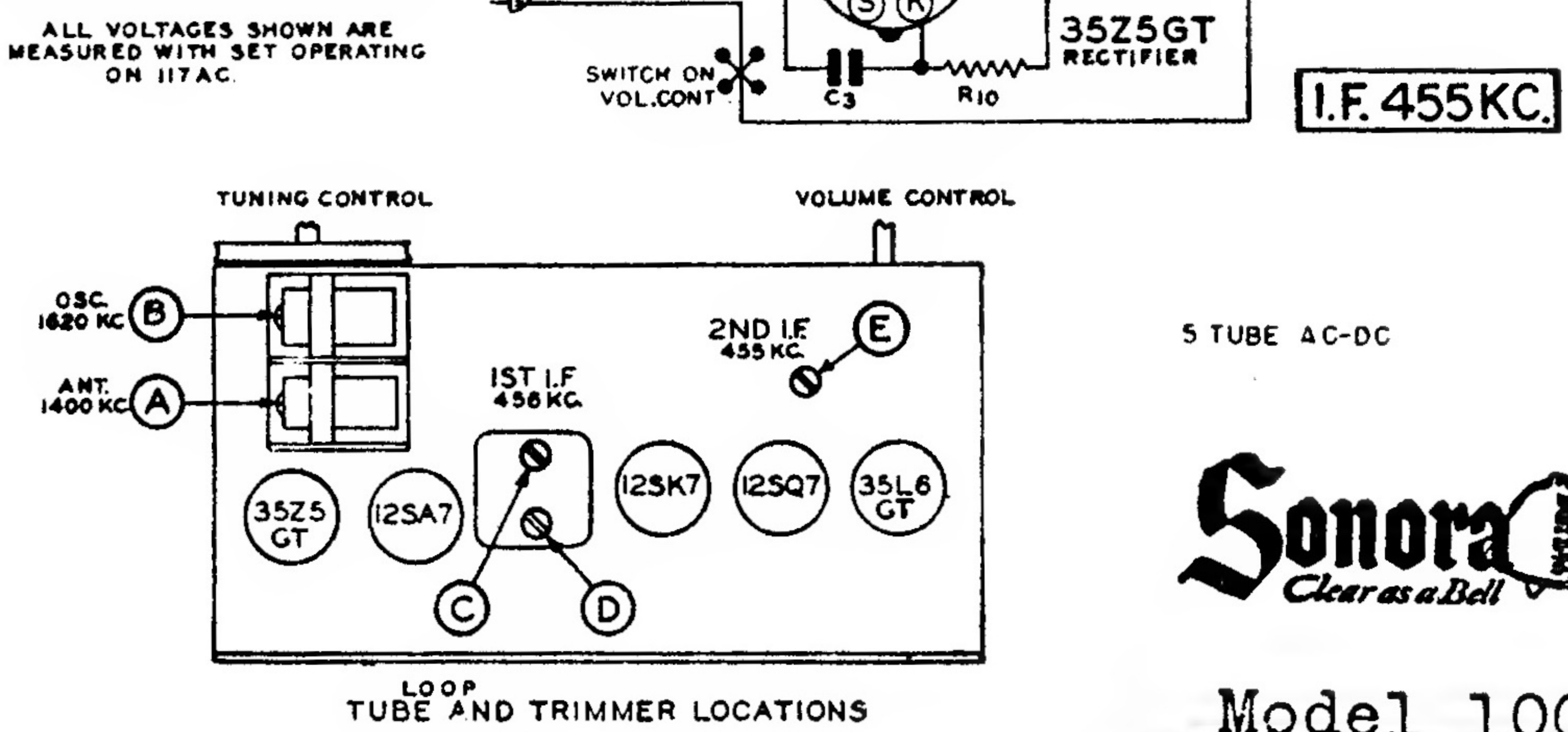
* IN SOME RECEIVERS ALL COMPONENTS INDICATED WITH * ARE REPLACED BY N-8477 AUDIO COUPLING PLATE.

ALL VOLTAGES SHOWN ARE MEASURED WITH SET OPERATING ON 117AC.

PART NO.	DESCRIPTION	PART NO.	DESCRIPTION
R1 N-4025	22,000 OHM .5W 20%	C8 N-1378	.02 MFD 400V
R2 N-4023	820 OHM .2W 10%	C9 N-6631	35MFD 150V ELECT.
R3 N-1262	1 MEG OHM .5W 20%	C10 N-1681	30 MFD 150V
R4 N-4889	.5 MEG VOL. CONT.	C11 N-1681	10 MMFD MICA
R5 N-4028	68 MEG OHM .5W 20%		
R6 N-4028	220,000 OHM .5W 20%		
R7 N-4027	470,000 OHM .5W 20%		
R8 N-4024	220 OHM .5W 10%		
R9 N-5358	1000 OHM .5W 10%		
R10 N-4022	33 OHM .5W 20%		
R11 N-4028	220,000 OHM .5W 20%		
R12 N-4063	47,000 OHM .5W 20%		
C1 N-1345	.06 MFD 200V	1 N-6829	ANTENNA LOOP COIL
C2 N-1345	.05 MFD 200V	2 N-5280	2 GANG CONDENSER
C3 N-1346	.05 MFD 400V	OR	
C4 N-1374	100 MMFD MICA	1 N-6812	ANTENNA LOOP COIL
C5 N-4894	.005 MFD 600V	2 N-5280	2 GANG CONDENSER
C6 N-4890	.0005 MFD 600V	3 N-4813	1ST I.F. TRANSFORMER
C7 N-1344	.01 MFD 400V	4 N-4846	2ND I.F. TRANSFORMER
		5 N-4318	4" PM SPEAKER
		6 N-3899	OUTPUT TRANSF.
		7 N-4810	OSCILLATOR COIL
		8 N-4048	TRIMMER
		* 47	DIAL LAMP

ALL VOLTAGES SHOWN ARE MEASURED WITH SET OPERATING ON 117AC.

ALL VOLTAGES SHOWN ARE MEASURED WITH SET OPERATING ON 117AC.



Model 100

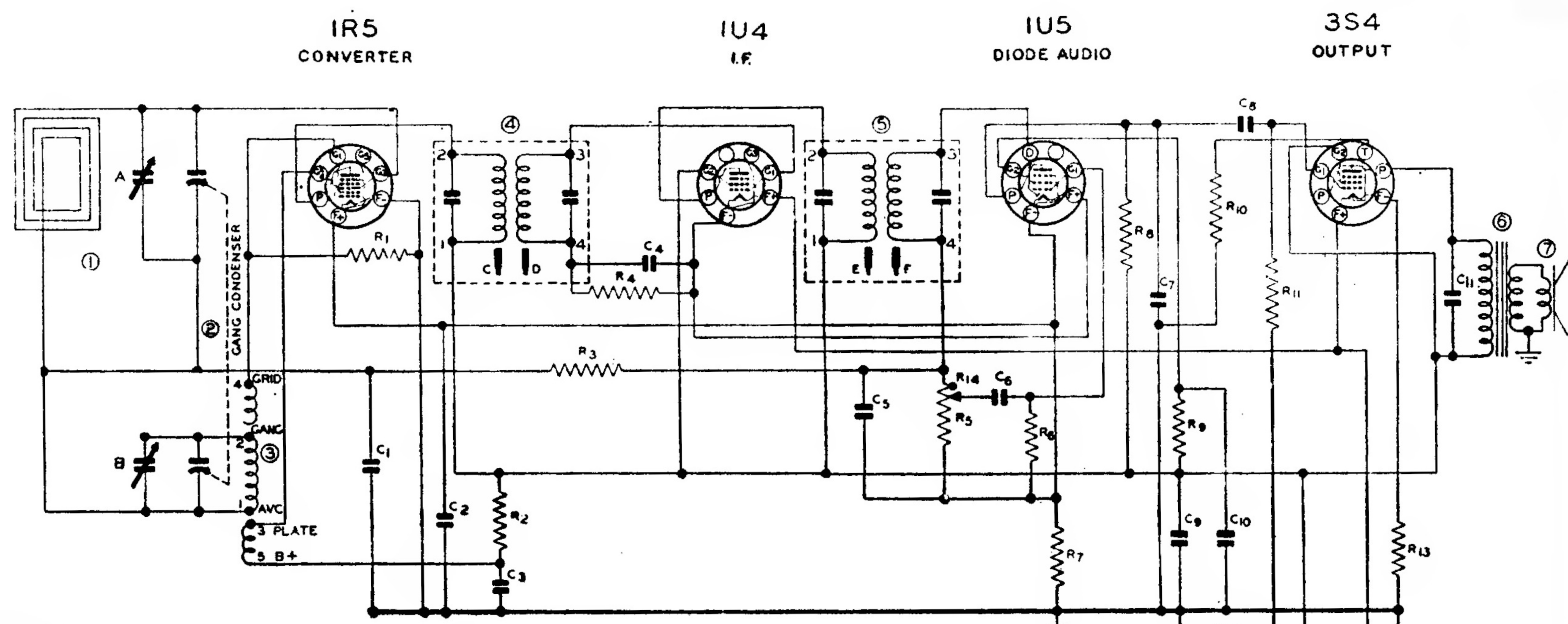
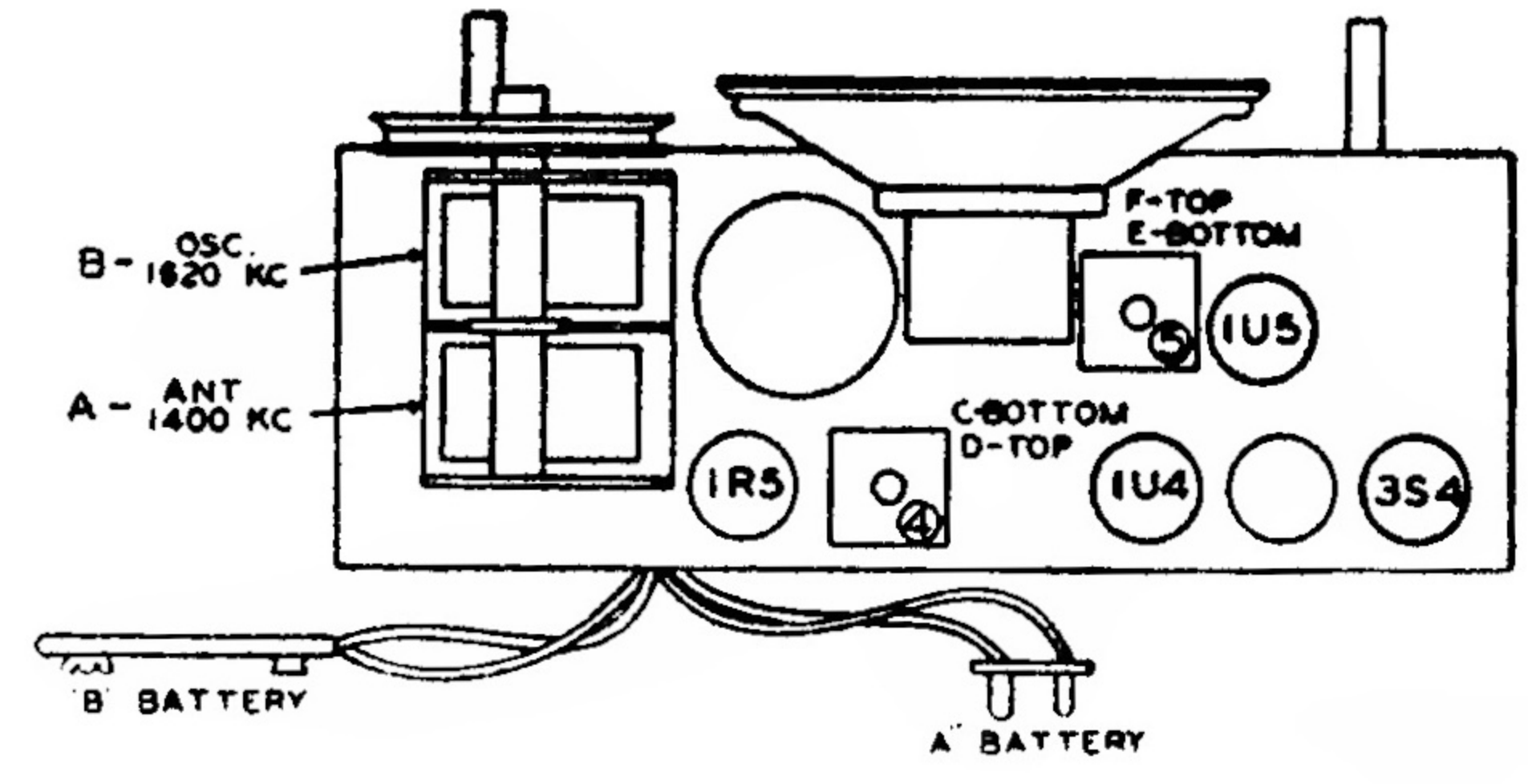


Diagram No.	Part No.	Description
C1	N-1345	.05 MFD 200 V. 20%
C2	N-1351	.1 MFD 200 V. -10% + 20%
C3	N-1345	.05 MFD 200 V. 20%
C4	N-1344	.01 MFD 400 V. 20%
C5	N-6015	100 MMFD 500 V. 20%
C6	N-4894	.005 MFD 600 V. -15% + 40%
C7	N-6015	100 MMFD 500 V. 20%
C8	N-4894	.005 MFD 600 V. -15% + 40%
C9	N-1367	.6 MFD 150 V. Electrolytic
C10	N-1344	.01 MFD 400 V. 20%
C11	N-6377	.002 MFD 600 V. -15% + 40%
R1	N-2973	100,000 Ohm .5 W. 10%
R2	N-5890	12,000 Ohm .5 W. 10%
R3	N-4061	4.7 Megohm .5 W. 20%
R4	N-4028	6.8 Megohm .5 W. 20%
R5	N-6779	1.0 Megohm Volume Control
R6	N-4028	6.8 Megohm .5 W. 20%
R7	N-4279	820 Ohm .5 W. 10%
R8	N-1262	1.0 Megohm .5 W. 20%
R9	N-5473	3.9 Megohm .5 W. 10%
R10	N-6793	1,200 Ohm .5 W. 10%
R11	N-4277	2.2 Megohm .5 W. 20%
R12	N-4228	680 Ohm .5 W. 10%
R13	N-6792	27 Ohm .5 W. 10%
R14	N-6781	47,000 Ohm (In Volume Control)
1	N-6781	Antenna Loop Coil
2	N-5986	2 Gang Capacitor
3	N-6003	Oscillator Coil
4	N-6865	Coil, 1st I.F.
5	N-6866	Coil, 2nd I.F.
6	N-6791	Output Transformer
7	N-6681	4" PM Speaker



I.F. 455 KC.



Model 101