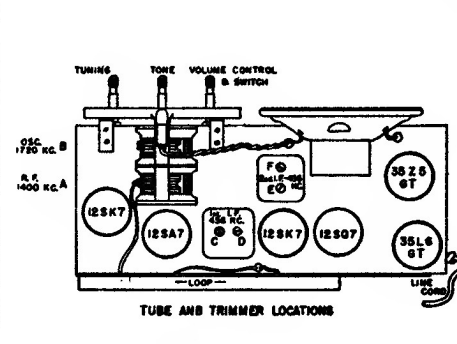
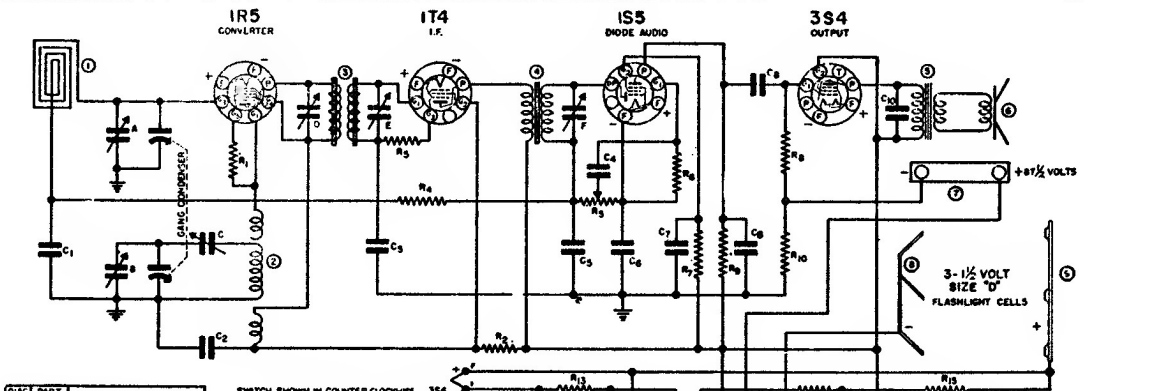


I.F.—456 K.C.

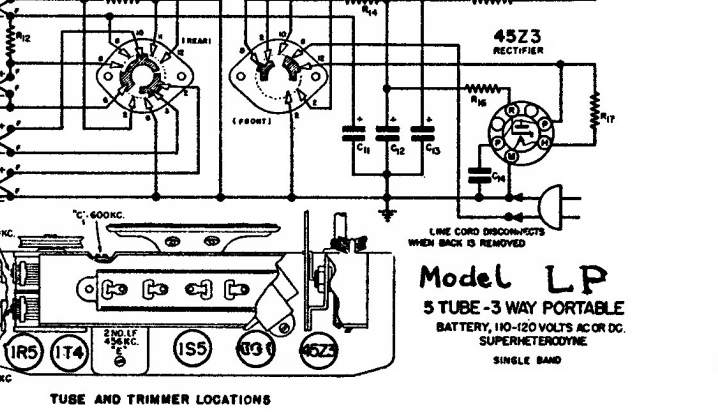
MODEL LKS
6 TUBE A.C.-D.C.
SUPERHETERODYNE
Sonora Radio



DIAG. NO.	PART NO.	DESCRIPTION	DIAG. NO.	PART NO.	DESCRIPTION
C1	N-1344	.01 MFD. 400 V. 20%	R11	N-4087	180 OHM 5 W 10%
C2	N-1343	.05 MFD. 200 V. 20%	R12	N-4088	220,000 OHM 5 W 20%
C3	N-1345	100 MFD. 200 V. 20%	R13	N-4089	25,000 OHM TONE CONTROL
C4	N-1353	150 MFD. MICA 20%	R14	N-4088	33 OHM 7.0 W 20%
C5	N-1374	100 MFD. MICA 20%	R15	N-4088	33 OHM 10 W 20%
C6	N-1352	503 MFD. 500 V. 20%	R16	N-4088	220,000 OHM 5 W 20%
C7	N-1447	5000 MFD. 400V. 20%	R17	N-4461	75 OHM 5 W 20%
C8	N-1344	.01 MFD. 400 V. 20%	R18	N-1252	MEG OHM 5 W 20%
C9	N-1376	.05 MFD. 400 V. 20%	R19	N-1481	75 OHM 5 W 20%
C10	N-1346	10 MFD. 400 V. 20%			
C11	N-3062	22 MFD. 200 V. 10%			
C12	N-1348	.05 MFD. 200 V. 20%			
C15	N-405	35 MFD. 150 W.V.	1	N-4028	ANTENNA LOOP COIL
C16	N-405	30 MFD. 150 W.V.	2	N-3298	OSCILLATOR COIL
C18	N-1346	25 MFD. 400 V. 20%	3	N-4028	1ST I.F. TRANSFORMER
C19	N-1374	100 MFD. MICA 20%	4	N-4070	2ND I.F. TRANSFORMER
R1	N-1259	15,000 OHM .5 W. 20%	5	N-4028	3RD I.F. TRANSFORMER
R2	N-4028	2200 OHM .5 W. 10%	6	N-4028	BUTPUT TRANSFORMER
R3	N-4028	27,800 OHM 5.0 W. 20%	7	N-4028	8" DYNAMIC SPEAKER
R4	N-4028	22,000 OHM .5 W 20%			
R5	N-1263	10 MEG OHM .5 W 20%			
R6	N-4028	3.3 MEG OHM .5 W 20%			
R7	N-4028	47,000 OHM .5 W 20%			
R8	N-4071	0.5 MEG OHM VOLUME CONTROL			
R9	N-4028	4.7 MEG OHM .5 W. 20%			
R10	N-4028	470,000 OHM .5 W. 20%			
			N-403	2 GANG CONDENSER	



DIAG. NO.	PART NO.	DESCRIPTION	DIAG. NO.	PART NO.	DESCRIPTION
R1	N-1778	100,000 OHM .5W 20%	C1	N-1343	.05 MFD. 200 V.
R2	N-4278	4,700 OHM .5W 10%	C2	N-1343	.05 MFD. 200 V.
R3	N-1263	10 MEG OHM .5W 20%	C3	N-1344	.01 MFD. 400 V.
R4	N-4277	2.2 MEG OHM .5W 20%	C4	N-1374	100 MFD. 400 V.
R5	N-4213	1 MEG OHM VOLUME CONTROL	C5	N-1351	.0001 MFD. (M 245 LF GAIN)
R6	N-4028	6.8 MEG OHM .5W 20%	C6	N-1344	.01 MFD. 200 V.
R7	N-4028	3.3 MEG OHM .5W 20%	C7	N-1344	.01 MFD. 400 V.
R8	N-1262	1 MEG OHM .5W 20%	C8	N-1342	30 MFD. MICA
R9	N-4277	2.2 MEG OHM .5W 20%	C9	N-1344	.01 MFD. 400 V.
R10	N-4279	820 OHM .5W 10%	C10	N-1344	.01 MFD. 400 V.
R11	N-4228	680 OHM .5W 10%	C11	N-1346	100 MFD. 12V.
R12	N-4280	56 OHM .5W 10%	C12	N-1206	30 MFD. 150V. ELECTROLYTIC
R13	N-4281	1800 OHM .5W 10%	C13	N-405	30 MFD. 150V.
R14	N-4028	2200 OHM 10%	C14	N-1346	.05 MFD. 400 V.
R15	N-4278	1870 OHM 4.8 W. 5%			
R16	N-4225	82 OHM 1.3 W 10%			
R17		1000 OHM 5.6 W 10%			
1	N-485	2 GANG CONDENSER			
2	N-4296	LOOP ANTENNA (19000)			
3	N-4235	LOOP ANTENNA (FLA982)			
4	N-4257	OSCILLATOR COIL			
5	N-670	1ST I.F. TRANSFORMER			
6	N-4259	2ND I.F. TRANSFORMER			
7	N-4258	OUTPUT TRANSFORMER			
8	N-4234	8" P.M. SPEAKER			
9	N-4274	BATTERY CONNECTOR			
10	N-4220	BATTERY SPRING CONTACT (POSITIVE)			
11	N-4222	BATTERY CONTACT STRIP (POSITIVE)			
12	N-4215	CHANGEVER SWITCH			



Sonora Radio