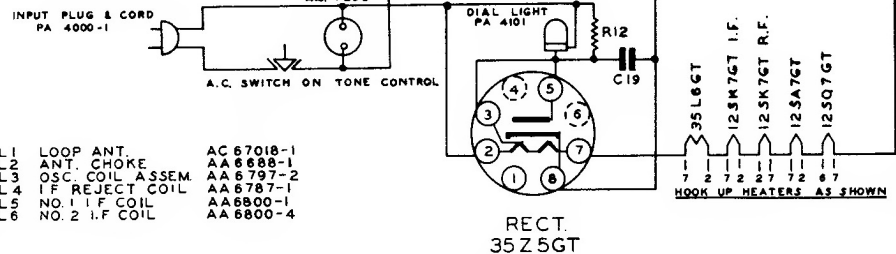


- |          |                         |             |
|----------|-------------------------|-------------|
| C1A & B  | VARIABLE CONDENSER      | PB 40410    |
| C2       | .05 MFD. 200 V.         | PC 40GK-503 |
| C3       | .05 MFD. 400 V.         | PC 40HL-503 |
| C4       | ANT. TRIMMER            | PA 4352-1   |
| C5       | .01 MFD. 200 V.         | PC 40HK-103 |
| C6       | IF REJECTOR TRIMMER     | PA 4352-4   |
| C7       | OSC. PADDER             | PA 4359     |
| C8       | OSC. TRIMMER            | MC 60F-510  |
| C9       | .51 MMF. MICA           | MC 60F-101  |
| C10      | 100 MMF. MICA           | AB 43500-44 |
| C11A & B | NO. 1 I.F. TRIMMER      | MC 60F-151  |
| C12      | 150 MMF. MICA           | AB 43500-45 |
| C13A & B | NO. 2 I.F. TRIMMER      | MC 60G-511  |
| C14      | .510 MMF. MICA          | PC 40HK-103 |
| C15      | .01 MFD. 200 V.         | PC 40HK-103 |
| C16      | .01 MFD. 200 V.         | PC 40GL-102 |
| C17      | .001 MFD. 400 V.        | PC 40HK-104 |
| C18      | .1 MFD. 200 V.          | PC 40HL-503 |
| C19      | .05 MFD. 400 V.         | PC 40GL-303 |
| C20      | .03 MFD. 400 V.         | PA 4304-1   |
| C21      | 40-30 MFD. ELECT. COND. |             |

- |     |                 |      |            |
|-----|-----------------|------|------------|
| R1  | 470 OHMS        | .5 W | BR 12G-471 |
| R2  | 10 MEG.         | .5 W | BR 12S-106 |
| R3  | 68000 OHMS      | .5 W | BR 12S-683 |
| R4  | 22000 OHMS      | .5 W | BR 12S-223 |
| R5  | 500000 OHMS     | .5 W | BR 12S-504 |
| R6  | 5100 OHMS       | .5 W | BR 12G-512 |
| R7  | 1 MEG.          | .5 W | BR 12S-106 |
| R8  | 56000 OHMS      | .5 W | BR 12G-563 |
| R9  | VOL. CONT.      |      | PA 4402-3  |
| R10 | 10 MEG.         | .5 W | BR 12S-106 |
| R11 | 270000 OHMS     | .5 W | BR 12S-274 |
| R12 | 82 OHMS         | .5 W | BR 12S-820 |
| R13 | TONE CONT. & SW |      | PA 4400-2  |
| R14 | 1200 OHMS       | .1 W | CR 12S-122 |
| R15 | 180 OHMS        | .5 W | BR 12S-181 |

- |    |                  |            |
|----|------------------|------------|
| L1 | LOOP ANT.        | AC 67018-1 |
| L2 | ANT. CHOKE       | AA 6688-1  |
| L3 | OSC. COIL ASSEM. | AA 6797-2  |
| L4 | IF REJECT COIL   | AA 6787-1  |
| L5 | NO. 1 I.F. COIL  | AA 6800-1  |
| L6 | NO. 2 I.F. COIL  | AA 6800-4  |



**SPARKS-WITHINGTON COMPANY**

**SPARTON SUPERHETERODYNE MODEL 6L8**  
**INTERMEDIATE FREQUENCY 456 KC.**  
 BOTTOM VIEW OF ALL SOCKET CONNECTIONS

**MODEL - 1030 & 1030A**

