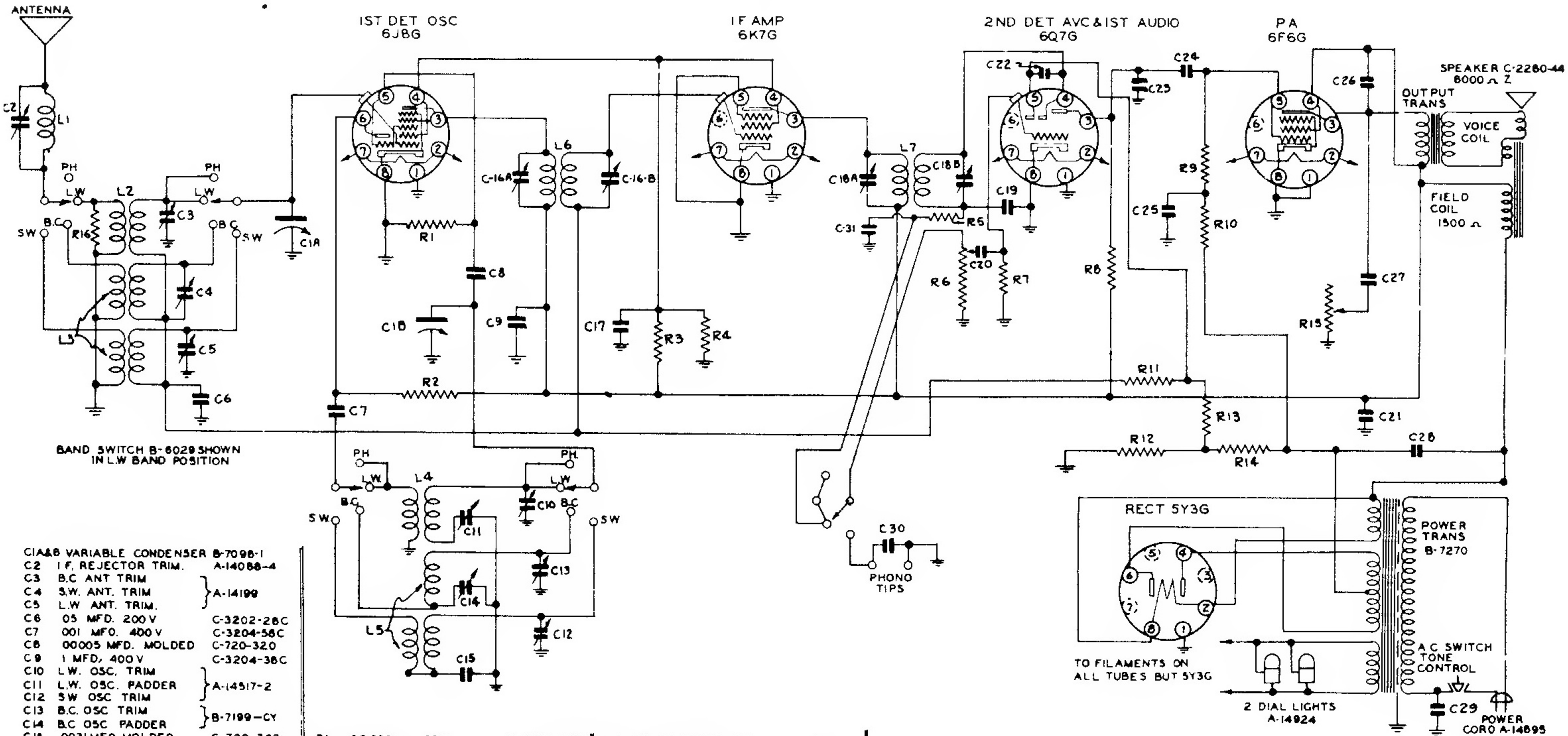


# SCHEMATIC DIAGRAM SPARTON SUPERHETERODYNE MODEL 540LX INTERMEDIATE FREQUENCY 456 K.C. TOP VIEWS OF ALL SOCKET CONNECTIONS

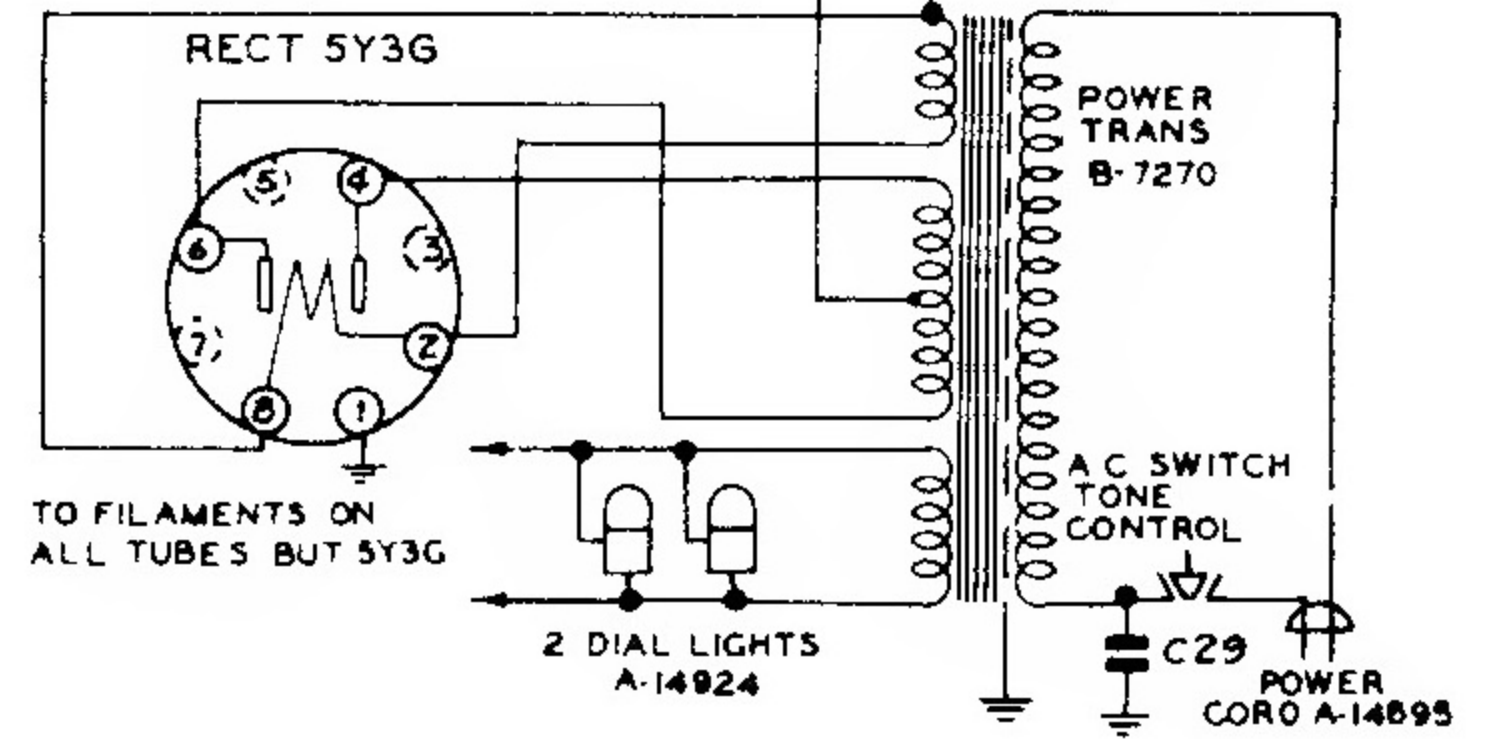


BAND SWITCH B-6029 SHOWN IN L.W. BAND POSITION

- C1A & B VARIABLE CONDENSER B-7098-1
- C2 I.F. REJECTOR TRIM. A-14088-4
- C3 B.C. ANT TRIM
- C4 S.W. ANT. TRIM
- C5 L.W. ANT. TRIM.
- C6 .05 MFD. 200V C-3202-28C
- C7 .001 MFD. 400V C-3204-58C
- C8 .00005 MFD. MOLDED C-720-320
- C9 1 MFD. 400V C-3204-38C
- C10 L.W. OSC. TRIM
- C11 L.W. OSC. PADDER
- C12 S.W. OSC TRIM
- C13 B.C. OSC TRIM
- C14 B.C. OSC PADDER
- C15 .0031 MFD MOLDED C-720-362
- C16A & B NO.1 I.F. TRIM B-7200-GG
- C17 1 MFD. 400V. C-3204-38C
- C18A & B NO.2 I.F. TRIM B-7200-GN
- C19 .00025 MFD MOLOEO C-720-319
- C20 .05 MFD. 200V C-3202-28C
- C21 30 MFD 300V ELECT A-14072-A
- C22 .0001 MFD. MOLDED C-720-318
- C23 .00025 MFD MOLDED C-720-319
- C24 .05 MFD. 400V C-3204-84C
- C25 1 MFD 200V. C-3202-38C
- C26 .008 MFD. 600V. C-3208-88C
- C27 .03 MFD. 800V C-3208-80C
- C28 16 MFD. 450V. ELECT A-14073-A
- C29 .008 MFD. 800V. C-3208-12C
- C30 .003 MFD. 200V. C-3202-82C
- C31 .0001 MFD MICA C-720-325

- R1 56 000 Ω 25 W C-2795-83B
- R2 22 000 Ω 5 W C-2796-78C
- R3 24 000 Ω 2 W C-2796-192A
- R4 27 000 Ω 1 W C-2797-79B
- R5 27 000 Ω 25 W C-2795-79B
- R6 5 MEG. VOLUME CONT A-15130
- R7 56 MEG 25 W C-2795-107B
- R8 270 000 Ω 25 W C-2795-91B
- R9 270 000 Ω 25 W. C-2795-91B
- R10 270 000 Ω 25 W C-2795-91B
- R11 1 MEGOHM 25 W C-2795-98B
- R12 62 Ω 25 W C-2795-133B
- R13 1 MEGOHM 25 W C-2795-98B
- R14 220 Ω 1 W. C-2797-143B
- R15 1 MEG TONE CONTROL A-15131
- R16 15 000 Ω 25 W C-2795-76B

- L1 I.F. REJECTOR COIL A-14677
- L2 L.W. ANT. COIL A-14685-1
- L3 B.C. & S.W. ANT. COIL A-14209-5
- L4 L.W. OSC. COIL A-14686-1
- L5 B.C. & S.W. OSC. COIL A-14213-5
- L6 NO.1 I.F. COIL A-12064-29
- L7 NO.2 I.F. COIL A-12064-30



POWER CORO A-14895