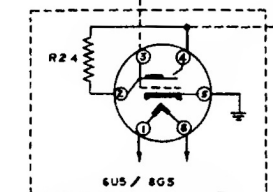
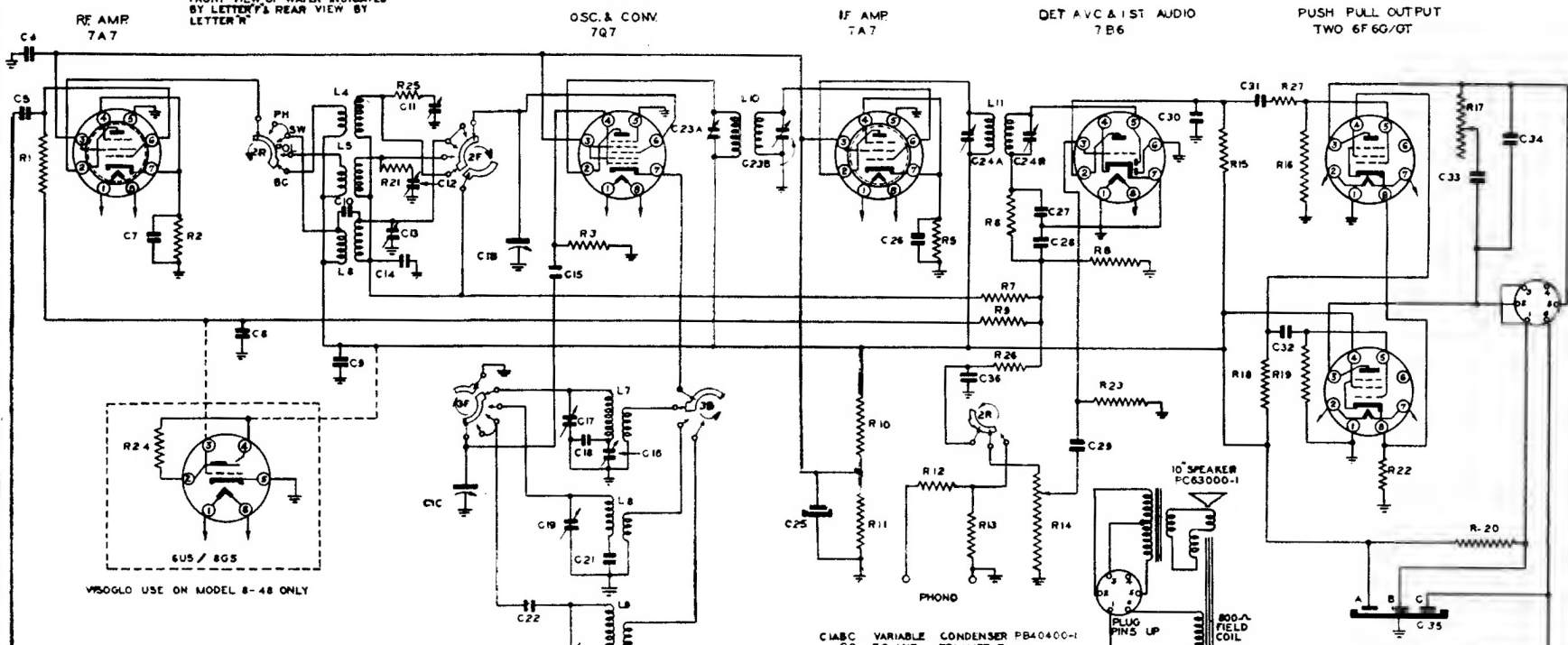


WAVE BAND SWITCH-PB42002
SHOWN IN B.C. POSITION

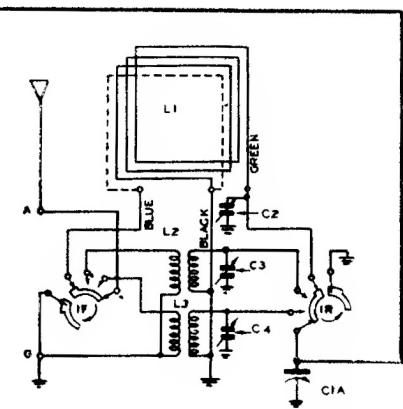
SWITCH WAFERS IDENTIFIED BY
NUMBERING FROM SHAFT END
FRONT VIEW OF WAFER INDICATED
BY LETTER 'F' REAR VIEW BY
LETTER 'R'

SPARTON SUPERHETERODYNE MODEL 7-46 & 7-46 PA. & 846 & 846 PA INTERMEDIATE FREQUENCY 456K.C.

BOTTOM VIEWS OF ALL SOCKET CONNECTIONS

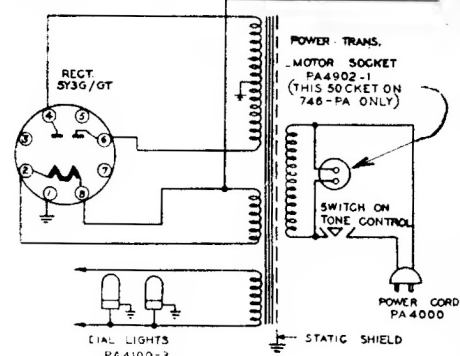


V50GLO USE ON MODEL 8-48 ONLY



R1	1 MEGOHM	5W	BR125-105
R2	420 Ω	5W	BR125-821
R3	20000 Ω	5W	BR125-163
R4	DELETE		BR125-335
R5	590 Ω	5W	BR125-561
R6	18000 Ω	5W	BR125-163
R7	3.3 MEGOHM	5W	BR125-335
R8	180000 Ω	5W	BR125-184
R9	3.3 MEGOHM	5W	BR125-335
R10	18000 Ω	2W	DR12G-163
R11	22000 Ω	1W	CP2G-223
R12	270000 Ω	5W	BR125-274
R13	270000 Ω	5W	BR125-274
R14	2 MEGOHM VOL. CGNT		PA4401-2
R15	270000 Ω	5W	BR125-274
R16	47000 Ω	5W	BR125-474
R17	25MEG. TONE	CONT. & SW	PA4404-1
R18	2000 Ω	5W	BR12G-202
R19	470000 Ω	5W	BR125-474
R20	1000 Ω	5W	OR125-102
R21	150 Ω	5W	BR125-151
R22	240 Ω	2W	DR12G-241
R23	10 MEGOHM	5W	BR125-108
R24	1 MEGOHM	5W	BR125-331
R25	330 Ω	5W	BR125-474
R26	18000 Ω	5W	BR125-102
R27	1000 Ω	5W	BR125-102
R28	8-48 ADD		
R29	1 MEGOHM	5W	BR125-105

CODE	TYPE	VALUE	MANUFACTURER
C1A	VAR. COND.	BC ANT	PB40400-1
C2	TRIMMER	ROL ANT	PA4358-1
C3	TRIMMER	SW ANT	MC80C-241
C4	TRIMMER	BC ANT	PC40HL-503
C5	MICA	240 MMF	PC40HK-503
C6	MFD	200V	PC40HL-503
C7	MFD	200V	PC40HL-503
C8	MFD	200V	PC40HL-503
C9	MFD	400V	MC80G-050
C10	MFD	400V	MC80G-050
C11	MFD	BC DET	PA4358-2
C12	MFD	PGL DET	PA4358-2
C13	MFD	SW DET	PA4358-2
C14	MFD	200V	PC40HK-503
C15	MFD	200V	PC40HK-503
C16	MFD	200V	PC40HK-503
C17	MFD	200V	PC40HK-503
C18	MFD	200V	PC40HK-503
C19	MFD	200V	PC40HK-503
C20	MFD	200V	PC40HK-503
C21	MFD	200V	PC40HK-503
C22	MFD	200V	PC40HK-503
C23	MFD	200V	PC40HK-503
C24	MFD	200V	PC40HK-503
C25	MFD	200V	PC40HK-503
C26	MFD	200V	PC40HK-503
C27	MFD	200V	PC40HK-503
C28	MFD	200V	PC40HK-503
C29	MFD	200V	PC40HK-503
C30	MFD	200V	PC40HK-503
C31	MFD	200V	PC40HK-503
C32	MFD	200V	PC40HK-503
C33	MFD	200V	PC40HK-503
C34	MFD	200V	PC40HK-503
C35	MFD	200V	PC40HK-503
C36	MFD	200V	PC40HK-503
C37	MFD	200V	PC40HK-503
C38	MFD	200V	PC40HK-503



POWER TRANS.
MOTOR SOCKET
PA4902-1
(THIS SOCKET ON
746-PA ONLY)

SWITCH ON
TONE CONTROL

POWER CORD
PA4000

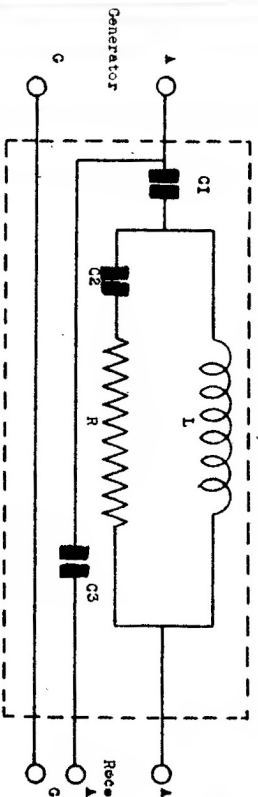
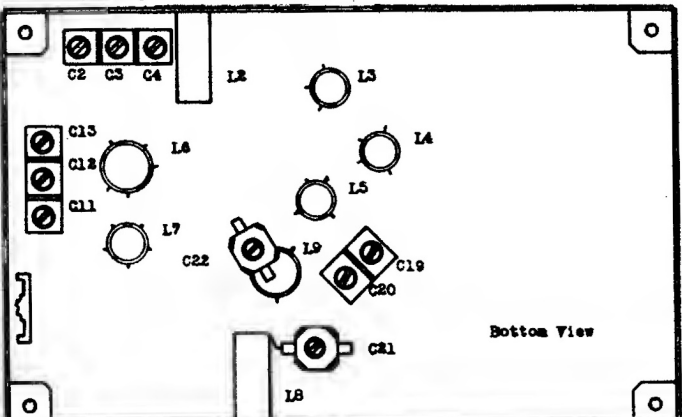
STATIC SHIELD

DIAL LIGHTS
PA4100-3

Sparton Superheterodyne Model 7-46 & 7-46-PA & 8-46 & 8-46-PA

OPERATION	ALIGNMENT OF	GENERATOR CONNECTED TO	DUMMY ANTENNA	GENERATOR FREQUENCY	BAND SWITCH SETTING	TUNING CONDENSER SETTING	TRIMMERS	REMARKS
1								Set dial pointer even with stop line when condenser gang is fully meshed.
2	I.F.	*	1.mf cond.	456KC	BC	Open	C24 A&B	Peak Accurately
							C23 A&B	" "
3	Broadcast Band	Ant.	See note	1500KC	BC	1500KC	C17 Osc.Trim	" "
							C11 Det.Trim	" "
4				600KC	BC	600KC	C2 Ant.Trim	" "
							C18 Osc. Pad.	Rock **
5	(Repeat operation 3).							
6	Check Calibration at 600 KC, 1000 KC and 1500 KC.							
7	Police Band	Ant.	See note	5 MC	Police Band	5 MC	C19 Osc.Trim	Peak Accurately
							C12 Det.Trim	Rock **
							C3 Ant.Trim	Rock **
							C21 Osc.Pad	See operation #9
8	Oscillator Padder C21 is precision set at the factory and should not be readjusted in the field.							
9	(Repeat operation 7).							
10	Check Calibration at 1.8 MC and 5 MC.							
11	SW Band	Ant.	See note	18 MC	SW Band	18 MC	C20 Osc.Trim	Peak Accurately
							C13 Det.Trim	Rock **
							C4 Ant.Trim	Rock **
							C22 Osc.Pad	See operation #12
12	Oscillator Padder C22 is precision set at the factory and should not be readjusted in the field.							
13	(Repeat operation 11).							
14	Check Calibration and nt 6 MC and 18 MC.							
15	Check operations 1 to 11 inclusive.							

NOTES: Use Dummy Antenna as described.
 * Connect generator to pin #6 on 7q7 Osc-conv. tube.
 ** Rock dial while adjusting for maximum output.



Line Voltage: 117 Volts A.C.

Position of Volume Control: Pull with dial tuned to quiet channel
 Position of Band Switch: Broadcast

TUBE	FUNCTION	Voltage of socket prongs to Gnd. See prong on schematic dia.							
		No. 1	No. 2	No. 3	No. 4	No. 5	No. 6	No. 7	No. 8
7A7	R. F. Amp.	0	230	63	2.8	0	**	2.8	6*
7Q7	Osc-Conv.	0	230	63	-6	0	-1.6	*	6*
7A7	I. F. Amp.	0	230	63	2.3	0	**	2.3	6*
7B6	Det-AMC-1st Audio	0	100	**	0	**	0	6*	6*
6F6	Push Pull Output	0	247	220	**	**	6*	14	14
6F6	Push Pull Output	0	247	227	**	**	6*	14	14
5Y3	Rectifier	0	325	0	320*	0	320*	0	325

--- Case Shield
 Choke Coil Specifications
 Tubing - 3/8" diameter bakelite
 Wire - No. 38 Enameled
 Turns - 59 closely round (Impregnated)

DUMMY ANTENNA

NOTES: Voltage readings are for schematic diagram in this bulletin. Allow 1 1/2 + or - on all measurements. Always use meter scale which will give greatest deflection within scale limits. All DC measurements made with 20,000 Ohms per volt voltmeter. All AC voltages made with rectifier type voltmeter.
 * AC Volts.
 ** Cannot be measured with 20,000 Ohms per volt voltmeter.