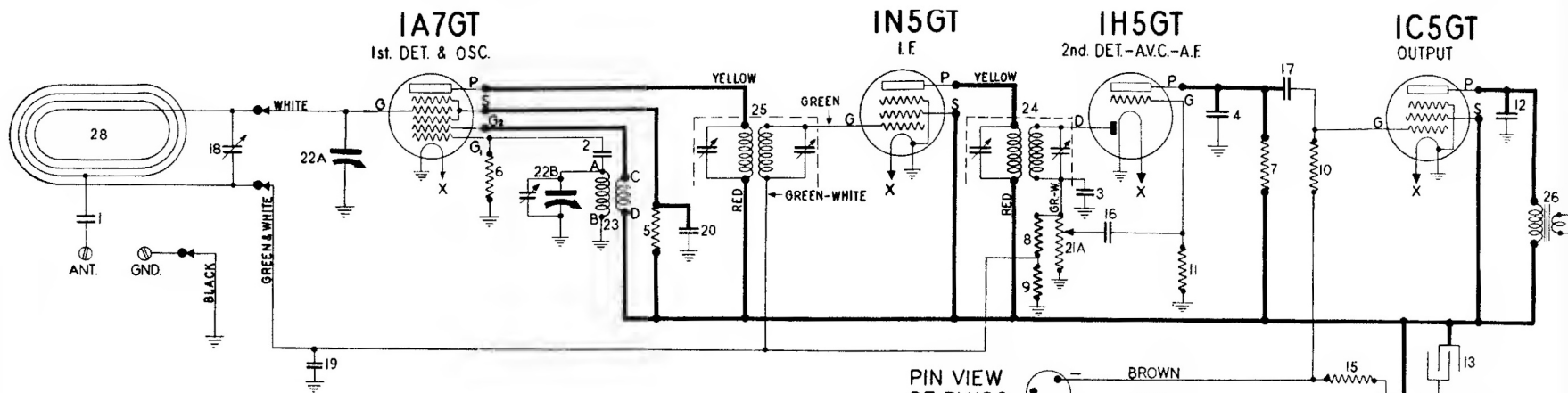


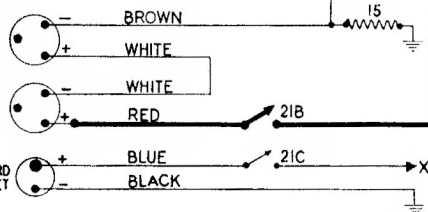
STEWART-WARNER MODEL 02-4A CHASSIS



INTERMEDIATE FREQUENCY
455 KC.

PIN VIEW
OF PLUGS
PLUGS FIT SMALL
AND COMBINATION
PIN BATTERY
SOCKETS

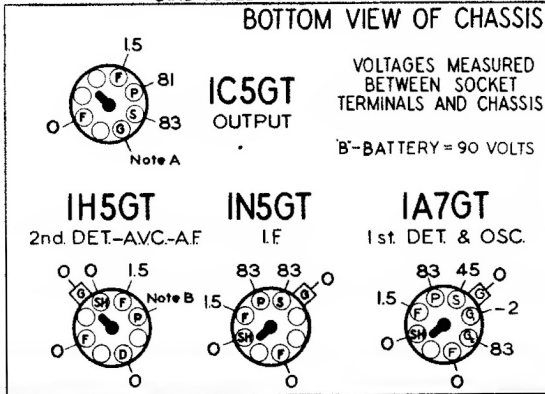
PLUG FITS STANDARD
"A" BATTERY SOCKET



SOCKET VOLTAGES

DIAL TUNED TO 540 KC.

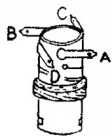
BOTTOM VIEW OF CHASSIS



VOLTAGES MEASURED
BETWEEN SOCKET
TERMINALS AND CHASSIS

B-BATTERY = 90 VOLTS

OSCILLATOR COIL
DIAGRAM NO. 23
PART NO. 117741



NOTE
TERMINALS OF COIL
SHOWN IN ILLUSTRATION
ARE LETTERED TO
CORRESPOND TO SIMI-
LARLY LETTERED TER-
MINALS ON THE CIRCUIT
DIAGRAM.

- | | | |
|-------------|----------|---|
| 1 | 83539 | Condenser—mica, 260 mmfd. |
| 2-3-4 | 85061 | Condenser—mica, 51 mmfd. |
| 5 | 110552 | Resistor—carbon, 47,000 ohms, 1/4 watt |
| 6 | 110553 | Resistor—carbon, 220,000 ohms, 1/4 watt |
| 7 | 110554 | Resistor—carbon, 1 megohm, 1/4 watt |
| 8-9-10 | 110570 | Resistor—carbon, 2.2 meg., 1/4 watt |
| 11 | 110580 | Resistor—carbon, 3.3 meg., 1/4 watt |
| 12 | 113035 | Condenser—Ceramic Tube, .006 mfd., 600 volt |
| 13 | 113118 | Condenser—Electrolytic—8 mfd., 150 volt |
| 14 | U-115068 | Speaker—P.M. Dynamic (4 in.) |
| 15 | 116061 | Resistor—800 ohm, 1/4 watt |
| 16-17 | 116640 | Condenser—.01 mfd., 600 volt |
| 18 | 116781 | Trimmer Condenser |
| 19-20 | 116819 | Condenser—.05 mfd., 600 volt |
| 21A-21B-21C | 117706 | Volume Control—1 meg., with switch |
| 22A-22B | 117707 | Condenser—Tuning |
| 23 | 117741 | Coil—Oscillator |
| 24 | 117742 | Transformer—2nd I.F. |
| 25 | 117743 | Transformer—1st I.F. |
| 26 | 117782 | Transformer—Output |
| 27 | U-118280 | Cone & Voice Coil Assembly for U-115068 Speaker |
| 28 | 117914 | Loop Antenna |