

STEWART-WARNER 15-5Y CHASSIS

(RECEIVER MODELS 15-5Y1 TO 15-5Y9)

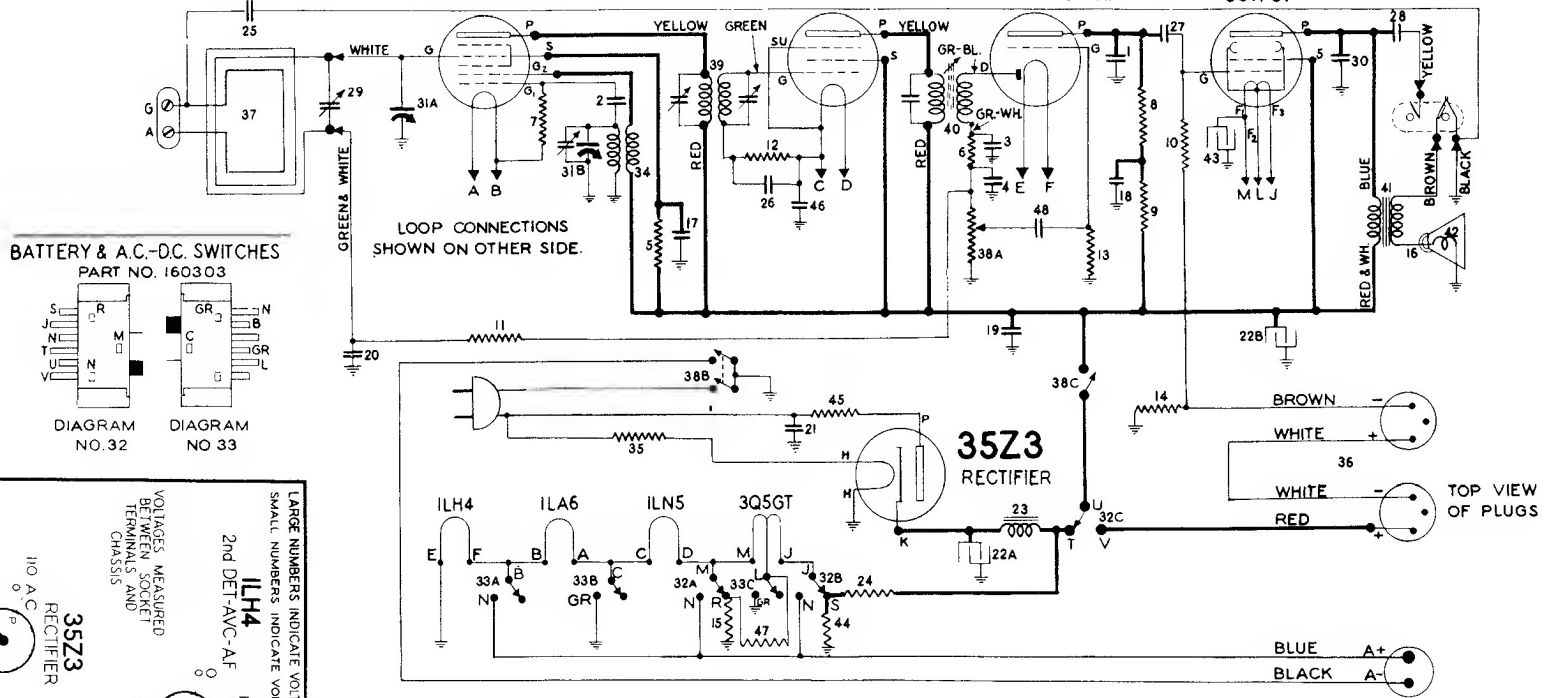
SWITCHES 32 & 33 ARE SHOWN
IN A.C.-D.C. POSITION.

ILA6
1st DET. & OSC

ILN5
I.F.

ILH4
2nd DET.-A.V.C.-A.F.

3Q5GT
OUTPUT



BATTERY & A.C.-D.C. SWITCHES
PART NO. 160303

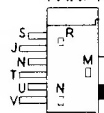


DIAGRAM
NO. 32

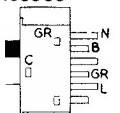
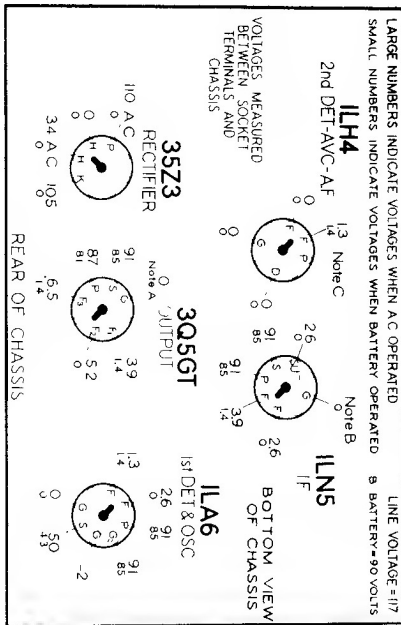


DIAGRAM
NO. 33

LOOP CONNECTIONS
SHOWN ON OTHER SIDE.



LARGE NUMBERS INDICATE VOLTAGES WHEN A.C. OPERATED
SMALL NUMBERS INDICATE VOLTAGES WHEN BATTERY OPERATED

1	81158	Condenser—mica, 100 mmfd.	.25	30	119875	Condenser—.002 mfd. 600 volt.	.15
2-3-4	85061	Condenser—mica, 51 mmfd.	.15	31A-31B	160298	Condenser—variable tuning with drum	2.80
5-6	110552	Resistor—carbon 47,000 ohms 1/4 watt	.12	32-33	160303	Battery & A.C. switches	.68
7	110553	Resistor—carbon 220,000 ohms 1/4 watt	.12	34	160475	Coil—oscillator	.44
8	110554	Resistor—carbon 1 megohm 1/4 watt	.12	35	160492	Power cord (resistor type)	.95
9	110559	Resistor—carbon 470,000 ohms 1/4 watt	.12	36	160493	Battery cable	.54
10	110570	Resistor—carbon 2.2 meg. 1/4 watt	.15	37	160570	Loop antenna—complete	1.50
11-12-13	110580	Resistor—carbon 3.3 meg. 1/4 watt	.12	38A to 38C	161227	Volume control—(1 meg.) & switch	1.30
14-15	112977	Resistor—insulated 470 ohm 1/4 watt	.15	39	161247	Transformer—1st I.F.	1.20
16	U-115120	Speaker—P.M. (5")	5.50	40	161248	Transformer—2nd I.F. (iron core)	1.35
17-18-19	116625	Condenser—.1 mfd. 600 volt.	.25	41	U-161255	Transformer—output for U-115120 spkr.	1.50
20-21	116819	Condenser—.05 mfd. 600 volt.	.20	42	U-161256	Cone & Voice coil for U-115120 speaker	1.40
22A-22B	117559	Condenser—electrolytic 30-30 mfd. 150 volt	1.20	43	161273	Condenser—electrolytic 50 mfd. 25 volt	.50
23	117888	Filter choke	.85	44	116082	Resistor—insulated 1500 ohms 1/4 watt	.15
24	118842	Resistor—1680 ohms 5 watts W. W.	.15	45	116275	Resistor—50 ohms. 1/2 watt W. W.	.15
25 to 28	119193	Condenser—.01 mfd. 600 volt.	.15	46	118290	Condenser—.5 mfd. 150 volt.	.50
29	119845	Condenser—trimmer (on loop)	.16	47	118827	Resistor—carbon. 270 ohms. 1/4 watt	.10
				48	119817	Condenser—.004 mfd. 600 volt.	.15