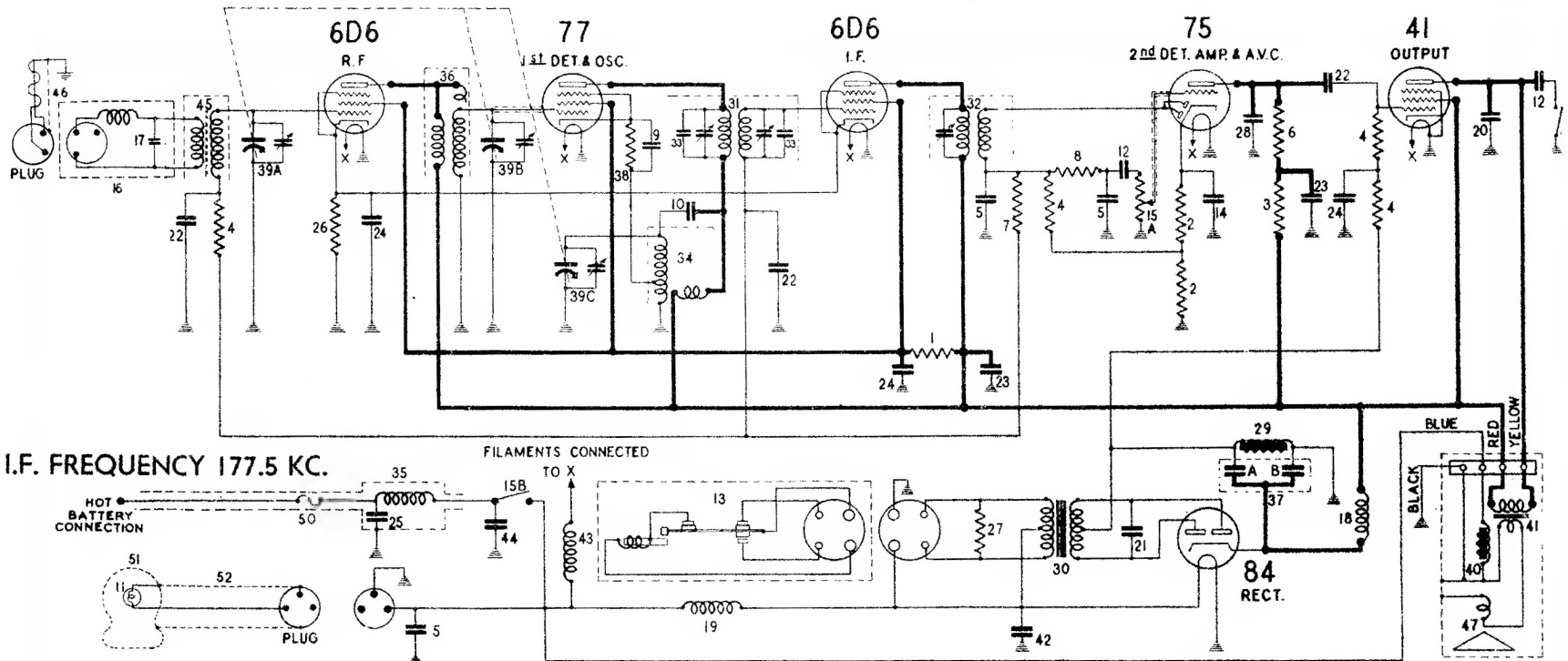


STEWART-WARNER MODEL R-160 AUTO RADIO CHASSIS (RECEIVER MODELS 1601 to 1609)



I.F. FREQUENCY 177.5 KC.

FILAMENTS CONNECTED TO X

1	66023	60.000 ohm 1 watt carbon resistor	27	88204	210 ohm 1/2 watt carbon resistor
2	67303	2.000 ohm 1/4 watt carbon resistor	28	88205	.0021 mfd. mica condenser
3	83080	51.000 ohm 1/4 watt carbon resistor	29	88210	Filter choke
4	83082	260.000 ohm 1/4 watt carbon resistor	30	88213	Power transformer
5	83539	260 mmfd. mica condenser	31	88222	1st I.F. transformer
6	83777	Battery cable and fuse housing	32	88223	2nd I.F. transformer
7	84198	110.000 ohm 1/4 watt carbon resistor	33	88233	110 mmfd. mica condenser
8	84235	1.1 megohm 1/4 watt carbon resistor	34	88234	Oscillator coil and shield assembly
9	84238	11.000 ohm 1/4 watt carbon resistor	35	88239	"A" filter
10	81833	.091 mfd. mica condenser	36	88250	R.F. coil and shield assembly
11	85296	70 mmfd. mica condenser	37A}	88256	{Electrolytic condenser 4 mfd. 350 volt}
12	88026	Pilot lamp 6-8 volt (bayonet base)	37B}	88257	{Electrolytic condenser 8 mfd. 350 volt}
13	88054	.02 mfd. 400 volt paper condenser	38	88257	9.500 ohm 1/4 watt carbon resistor
14	88156	Tone control switch	39A to C	88258	Three gang variable condenser
15A}	88170	Vibrator	40	88271	Field coil and housing (for R-245-A spkr.)
15B}	88171	10 mfd. 25 volt electrolytic condenser	41	88276	Output transformer
16	88172	{Volume control 500,000 ohm}	42	88285	1.25 mfd. 150 volt paper condenser
17	88173	{Line switch}	43	88289	R.F. choke (to filaments)
18	88174	Antenna Filter	44	88298	.25 mfd. 150 volt paper condenser (low reactance)
19	88181	50 mmfd. mica condenser	45	88312	Antenna coil and shield assem. (iron core)
20	88183	R. F. choke coil	46	88327	Antenna cable and plug
21	88185	R. F. choke coil (to vibrator)	47	88328	Diaphragm and shell assem. (R-245-A spkr.)
22	88187	.006 mfd. 600 volt paper condenser	48	83777	Battery cable and fuse housing
23	88189	.01 mfd. 1500 volt paper condenser	49	88054	Tone control switch
24	88189	.05 mfd. 200 volt paper condenser	49	88054	Fuse, 10 amperes
25	88191	.1 mfd. 300 volt paper condenser	51	88730	Control head less shafts
26	88193	.25 mfd. 150 volt paper condenser	52	88738	Pilot light cable with plug, 31"
27	88195	.5 mfd. 150 volt paper condenser			
28	88203	600 ohm 1/4 watt carbon resistor			

I.F.

H. 0
H. 5.7
K. 7
SUP. 7
S.G. 110
P. 240

1st DET. & OSC.

H. 0
H. 5.7
K. 6 note A
SUP. 0
S.G. 110
P. 240

R.F.

K. 7
H. 5.7
H. 0
P. 240
S.G. 110
SUP. 7

THESE VOLTAGES MEASURED BETWEEN SOCKET TERMINALS AND CHASSIS

BATTERY VOLTAGE 6.0

RECT.

P. 240 A.C.
K. 240
H. 5.7
H. 0
P. 240 A.C.

2nd DET. AMP. & A.V.C.

K. 1.5
D. 0
D. 0
P. 120
H. 0
H. 5.7

OUTPUT

H. 5.7
H. 0
P. 234
S.G. 240
K. 0

ABBREVIATIONS

D. DIODE
G. GRID
H. HEATER
K. CATHODE
H. 0
P. PLATE
S.G. SCREEN GRID
SUP. SUPPRESSOR GRID

CONTROL END