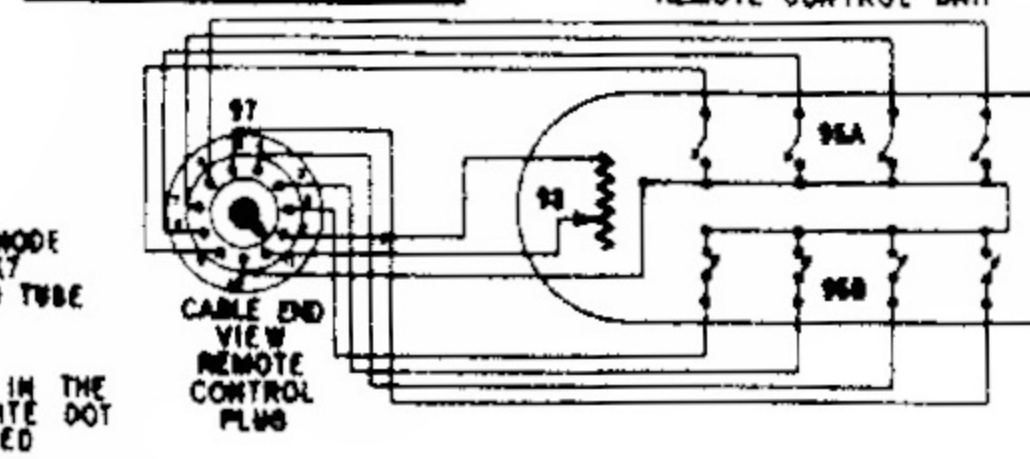
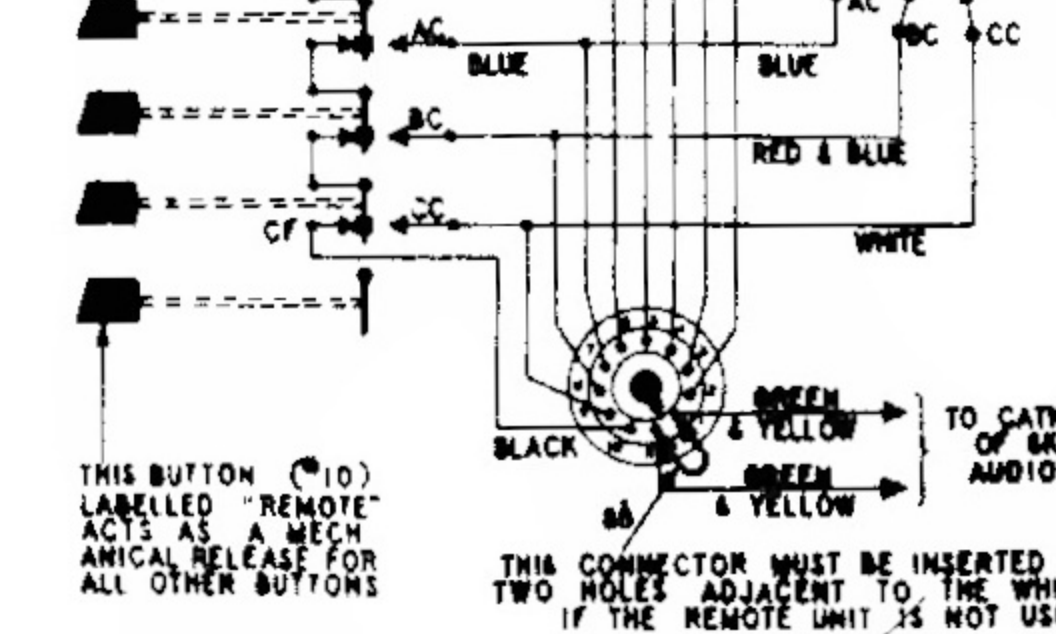


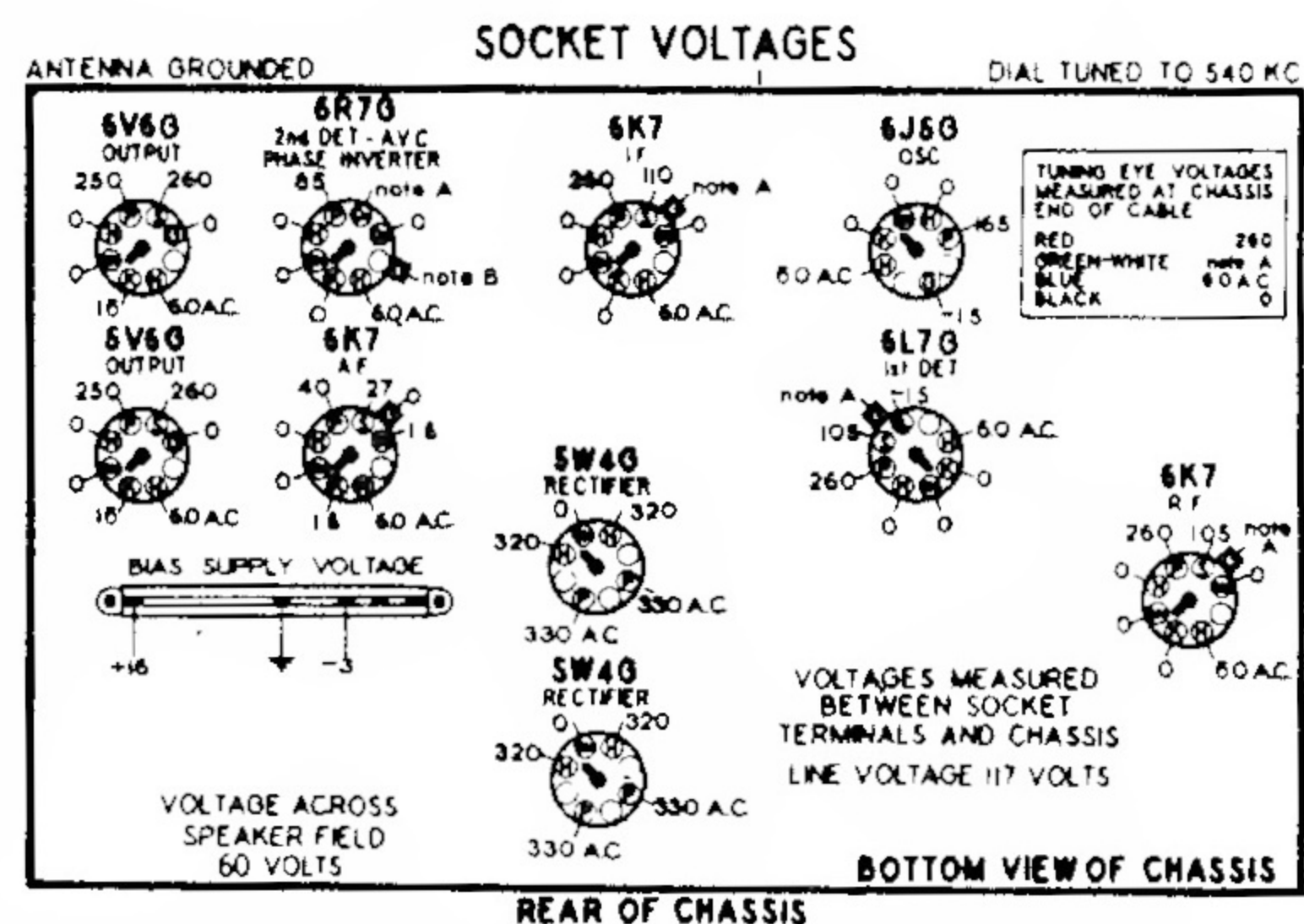
NOTE: TERMINALS OF ALL SWITCHES AND COILS ARE LETTERED TO CORRESPOND WITH PICTORIAL VIEWS OF THESE PARTS ON PAGE 6



### PARTS LIST

DIAGRAM NUMBER	PART NUMBER	DESCRIPTION	LIST PRICE	DIAGRAM NUMBER	PART NUMBER	DESCRIPTION	LIST PRICE
1	83539	Condenser - mica 250 mfd.	.20	33-34-35	110553	Resistor - carb. 220,000 ohms ± W.	.12
2-3-4	83763	Condenser - mica 110 mfd.	.20	36-37			
5	85081	Condenser - mica 51 mfd.	.15	38-39	110554	Resistor - carb. 1 meg. 1/4 watt	.12
6	86026	Condenser - paper .02 mfd. 400 V.	.25	40-41			
7	86029	Condenser - paper .004 mfd. 400V.	.25	42	110557	Resistor - carb. 4,700 ohm 1/4 W.	.12
8-9	86030	Condenser - paper .01 mfd. 400 V.	.25	43-44	110559	Resistor - carb. 470,000 ohms ± W.	.12
10	86054	Switch - for set up	.30	45	110560	Resistor - carb. 100 ohm 1/2 watt	.12
11	88185	Condenser - ceramic tube .005 mfd. 600 volt	.25	46	110564	Resistor - carb. 100,000 ohm ± W.	.12
12				47	110568	Resistor - carb. 15,000 ohm 1 W.	.15
13-14	88189	Condenser - paper .05 mfd. 200 V.	.25	48-49-50	110629	Lamp - 6.3 volt - .25 amps	.15
15				51	110975	Resistor - W.W. 33 ohm 1/2 watt	.12
16-17-18	88191	Condenser - paper .1 mfd. 300 V.	.25	52	111214	Condenser - paper .01 mfd. 600 V.	.24
19	88990	Condenser - paper .5 mfd. 150 V.	.38	53-54			
20	89421	Condenser - paper .1 mfd. 200 V.	.25	55-56	111252	Condenser - paper .05 mfd. 400 V.	.13
21	89532	Condenser - paper .25 mfd. 200 V.	.32	57	112426	Condenser - mica 1850 mfd. (3%)	.30
22	89643	Condenser - paper .25 mfd. 300 V.	.40	58	112427	Condenser - mica 4050 mfd. (3%)	.40
23	89828	Condenser - paper .004 mfd. 750V.	.24	59	112796	Coil - wave trap (with trimmer)	.50
24	89937	Condenser - elect. .30 mfd. 450 V.	1.80	60	112955	Resistor - carb. 1000 ohms 1/4 watt (10%)	.12
25-26	110577	Condenser - elect. 10 mfd. 25 V.	.80	61	112956	Resistor - carb. 220,000 ohms 1/4 watt (10%)	.12
27-28-29	110562	Resistor - carb. 47,000 ohms ± W.	.12				
30-31-32							

DIAGRAM NUMBER	PART NUMBER	DESCRIPTION	LIST PRICE
62	112958	Resistor - carb. 18,000 ohms 1/4 watt (10%)	.12
63	112959	Resistor - carb. 120,000 ohms 1/4 watt (10%)	.12
64A to C	113219	Condenser - variable gang	6.80
65	113229	Transformer - 2nd I. F.	1.84
66	113256	Push-Button Switch Assm.	3.75
67	113257	Switch - Tone control	.70
68A-68B	113258	Volume Control - 250,000 ohms with off-on switch	.95
69	113261	Condenser - elect. 30 mfd. 450 V.	1.40
70	113296	Coil - antenna (B.C.)	1.20
71	113296	Coil - R. F. (B.C.)	1.30
72	113298	Coil - antenna (Police)	.50
73	113301	Coil - antenna (S.W.)	.52
74A to C	113319	Condenser - trimmer - 3 section	.84
75A to C	113320	Condenser - trimmer - 3 section	.84
77	113346	Condenser - peedding	.38
78	113361	Transformer - output	2.90
79	113382	Transformer - 1st I.F.	2.40
80	113384	Transformer - power 117 volt 60 cycle	9.00
81A-81B	113399	Resistor - Bias Strip Section A - 20 ohms Section B - 200 ohms	.38
82	113411	Coil - oscillator (B.C.)	.50
83	113412	Coil - oscillator (Police)	1.20
84	113430	Resistor - carbon 90 ohms	.26
85	113450	Motor - for electric tuning (supplied with tuning shaft & gear)	7.80
66A-66B	113469	Resistor - Bleeder Section A - 5800 ohms Section B - 5600 ohms	.92
87	R-113482	Cone - voice coil for R-115016 speaker	2.10
88	113499	Connector Link - for remote control plug	.01
89	113569	Switch - range	2.10
90	113607	Coil - oscillator (S.W.)	.52
91	113608	Coil - R.P. (S.W.)	.60
92	113609	Coil - R.P. (Police)	.50
93	R-115018	Speaker - dynamic 12"	10.00



Use a high resistance voltmeter of at least 1000 ohms per volt.

NOTE A: The bias for the control grids of the 6L7-G, 6K7-R.F., 6K7 I.F. and the diode plate (D) of the 6R7-G tubes is -3.0 volts measured across resistor B1A.

NOTE B: The bias for the control grid of the audio section of the 6K7-G is -3.0 volts measured across resistor B1A.

Stewart-Warner Corp.  
1826 Diversey Parkway  
Chicago, Illinois