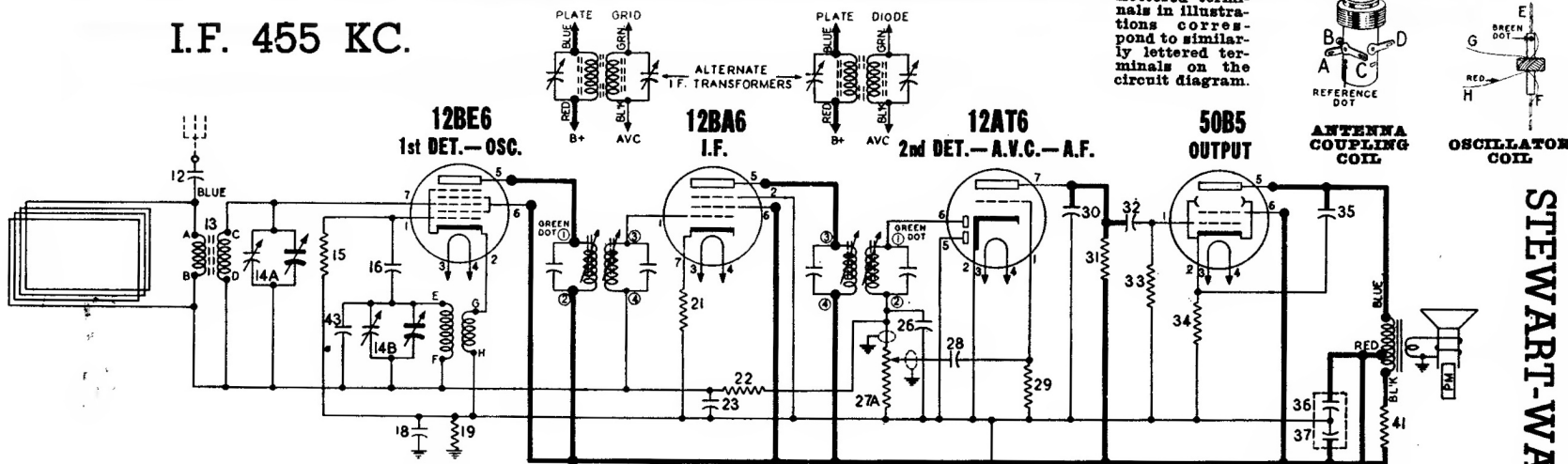
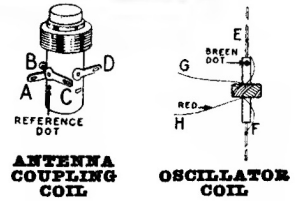


I.F. 455 KC.

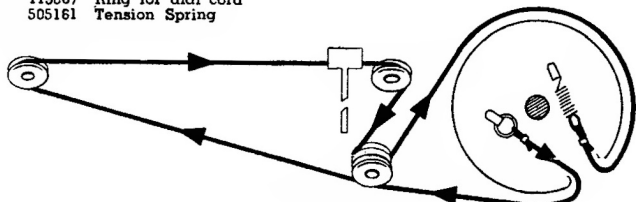


Lettered terminals in illustrations correspond to similarly lettered terminals on the circuit diagram.

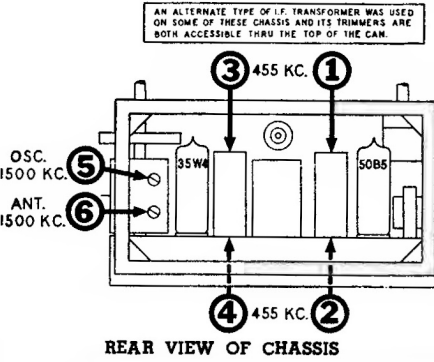


To string dial cord, turn the drive drum to maximum clockwise position and use the following parts:

- 114955 Clip on end of cord
- 119087 Ring for dial cord
- 117057 Cord (2 feet required)
- 505161 Tension Spring



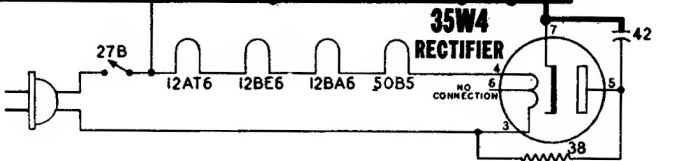
DIAL AND POINTER DRIVE CORD ARRANGEMENT



REAR VIEW OF CHASSIS

CONDENSERS	
12	502156 Condenser—.004 Mfd. 400 volt.
14	504390 Condenser—variable gang (with drum).
15	504434 Condenser—ceramic 50 Mmfd. 500 volt.
18	504446 Condenser—.1 Mfd. 400 volt.
23	504444 Condenser—.05 Mfd. 400 volt.
26	502271 Condenser—mica 260 Mmfd. 500 volt.
28	504445 Condenser—.004 Mfd. 150 volt.
30	502271 Condenser—mica 260 Mmfd. 500 volt.
32	504450 Condenser—.01 Mfd. 150 volt.
35	504448 Condenser—.01 Mfd. 400 volt.
36	504431 Condenser—electrolytic 20 Mfd. 150 volt.
37	504431 Condenser—electrolytic 20 Mfd. 150 volt.
42	504444 Condenser—.05 Mfd. 400 volt.
43	502285 Condenser—10 Mmfd. 500 volt.

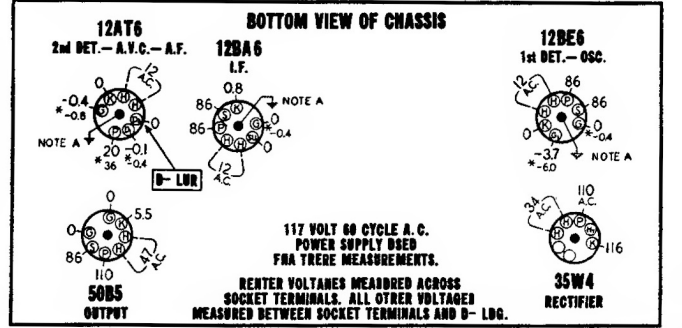
RESISTORS	
15	504440 Resistor—carbon 22,000 ohms 1/3 watt.
19	504435 Resistor—carbon 220,000 ohms 1/3 watt.
21	504436 Resistor—carbon 82 ohms 1/2 watt.
22	504441 Resistor—carbon 2.2 Meg. 1/3 watt.
27A, B	504391 Volume control—with switch: 1 Meg.
28	504439 Resistor—carbon 3.3 Meg. 1/3 watt.
31	504438 Resistor—carbon 470,000 ohms 1/3 watt.
33	504436 Resistor—carbon 470,000 ohms 1/3 watt.
34	504437 Resistor—carbon 150 ohms 1/2 watt.
38	502574 Resistor—carbon 33 ohms 1/2 watt.
41	504442 Resistor—carbon 1500 ohms 1 watt.



SOCKET VOLTAGES

Measured with voltmeter having sensitivity of 1000 ohms per volt except where indicated by (*). The (*) symbol designates a vacuum tube voltmeter measurement.

VOLUME ON FULL WITH NO SIGNAL DIAL TUNED TO 540 KC.



NOTE A: Grounding of center stud on tube socket is necessary to reduce capacity coupling between other pins. Oscillation may result if this ground is omitted.

STEWART-WARNER MODELS [AS1T1] [AS1T2] [AS1T3] 9020-A 9020-B 9020-C