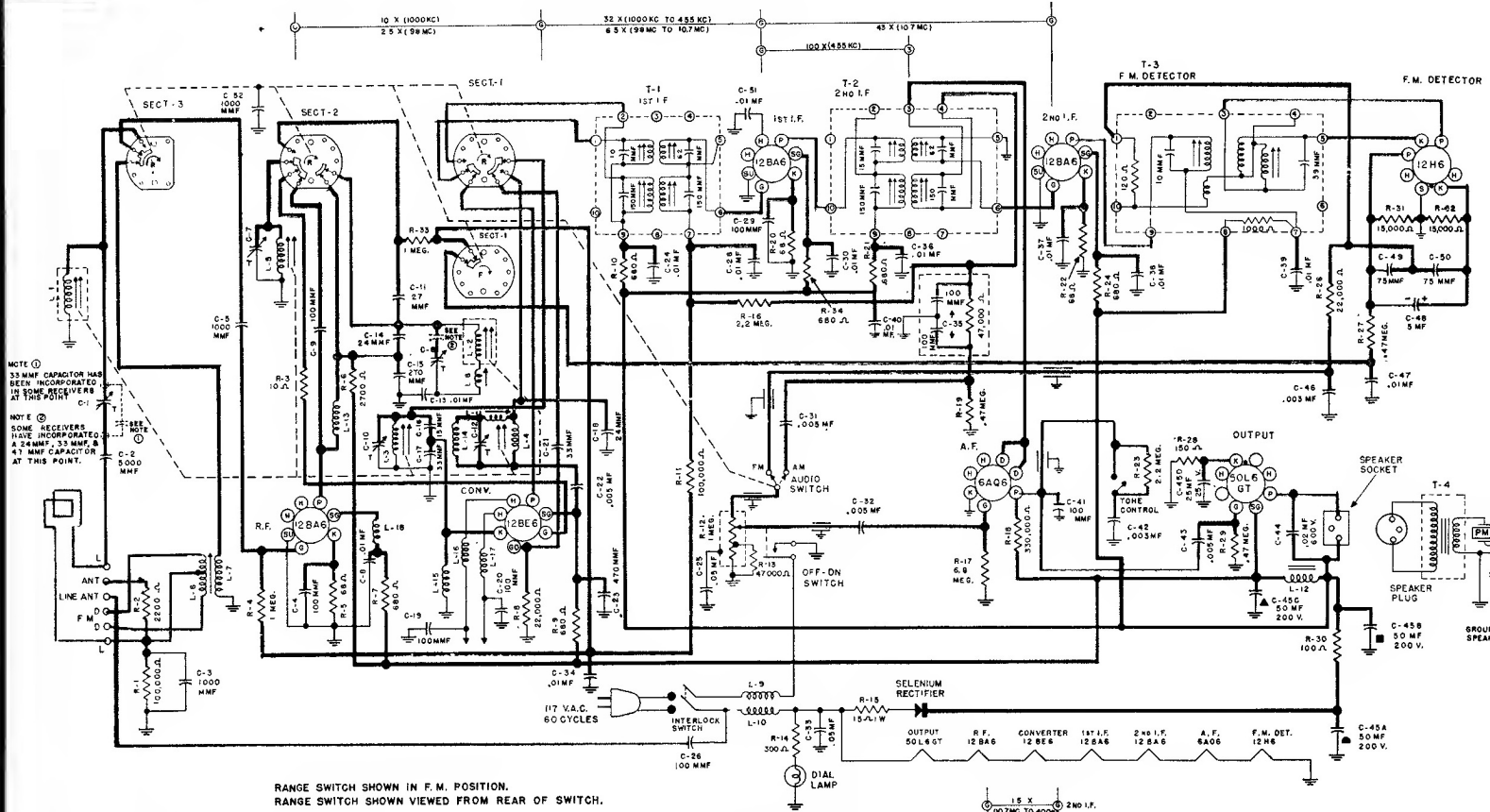


STROMBERG-CARLSON SERVICE NOTES

AC-DC RADIO RECEIVER

NO. 1204

SERIES NO. 10-11



NOTE ①
53 MMF CAPACITOR HAS BEEN INCORPORATED IN SOME RECEIVERS AT THIS POINT.

NOTE ②
SOME RECEIVERS HAVE INCORPORATED A 24MMF, 33 MMF & 47 MMF CAPACITOR AT THIS POINT.

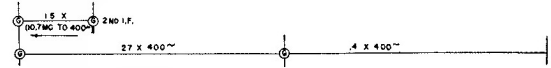
RANGE SWITCH SHOWN IN F.M. POSITION.
RANGE SWITCH SHOWN VIEWED FROM REAR OF SWITCH.

IDENTIFICATION TABLE

MODEL	CHASSIS	CABINET	SPEAKER
HI	112021	108056	155030
HB	112021	108044	155030
HME	112021	108063	155030
HMG	112021	108062	155030

SPECIFICATIONS

- Voltage Rating.....105-125 Volts AC-DC
- Type of Circuit.....Superheterodyne
- Tuning Range.....A.M.—540 KC.—1600 KC.
F.M.—88 MC.—108 MC.
- Number & Type of Tubes—7
 - 3—12BA6..... R.F. Amp. and two I.F. Amp.
 - 1—12BE6..... Converter
 - 1—6AQ6..... 1st Audio Amp.—A.M. Det. & AVC
 - 1—12H6..... F.M. Def.
 - 1—50L6GT..... Power Output
- Input Power Rating..... 40 Watts
- Intermediate Frequency.....A.M. 455 KC. F.M. 10.7 MC.
- Speaker Voice Coil Impedance (PM).....3 Ohms
- Power Output.....1.25 Watts at less than 10% distortion

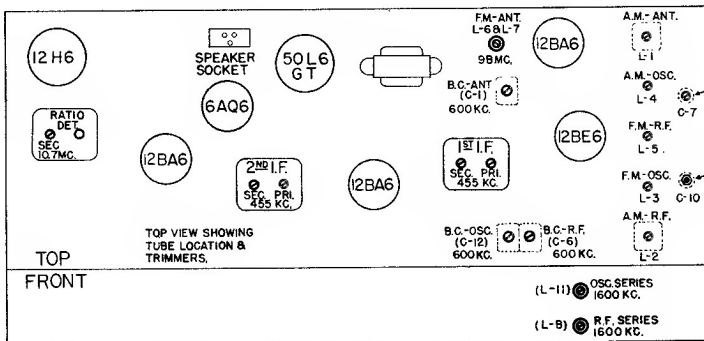


STROMBERG-CARLSON

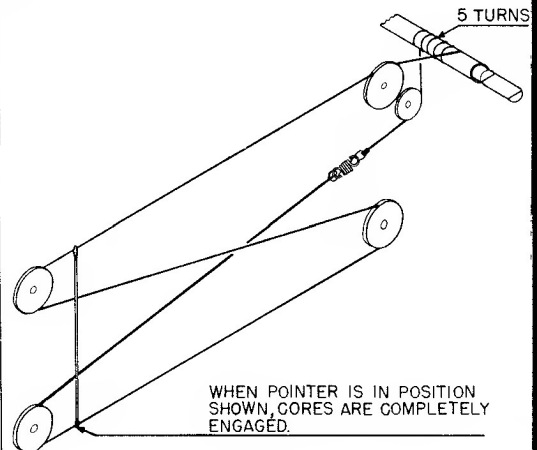
ALIGNMENT PROCEDURE 1204

Band and Pointer Setting	Generator Setting	Input and Dummy	VTVM Connection and Scale	Trimmer Adj. and Notes
A.M. I.F. ALIGNMENT				
(1) AM-Pointer near middle of dial	455 kc. 400 cy. mod.	Junction C-13, 6 and L-8 200 mmf. dummy	Junction C-31, 35 3VDC scale	Adj. Pri. and Sec. cores two AM IF, transformers top of chassis. Highest voltage
F.M. I.F. ALIGNMENT				
(1) FM-Pointer near middle of dial	10.7 mc 400 cy mod.	Junction C-10, 16 and L-3	AVC buss (Green and White Wire) —3VDC scale	Detune Sec. Ratio Det. Transformer adjust four FM IF cores, bottom of chassis, in following order counting from band switch—One, Four, Two Three for highest voltage. DO NOT REPEAT
(2) " "	" "	" "	" "	Adjust Pri. Ratio Det. Transformer for highest voltage.
(3) " "	" "	" "	Center terminal audio switch —3 VDC scale	Adjust Sec. Ratio Det. Transformer for ZERO voltage.
(4) Repeat (2) and (3)				
A.M. R.F. ALIGNMENT				
(1) AM-600 kc	600 kc 400 cy. mod.	Loop and link connected 200 mmf dummy to Ant. terminal	Junction C-31, 35 —3 VDC scale	Adjust C-12, 6 and 1 for highest voltage.
(2) AM-1600 kc Repeat (1) and (2)	1600 kc	" "	" "	Align L-8, 11 for highest voltage.
F.M. R.F. ALIGNMENT				
FM Pointer at 98 to 100 mc.	98 to 100 mc. 400 cy mod.	" "	AVC buss (Green and White Wire) —3 VDC scale	Adjust C-7, 10 and core L-6 and 7 for highest voltage.

Voltage and Tube Location Chart



Dial Stringing Chart



Measurements are made at 117V line, using electronic Voltmeter. Except where otherwise indicated, voltages are D.C. and are positive with respect to the reference point which is the chassis.