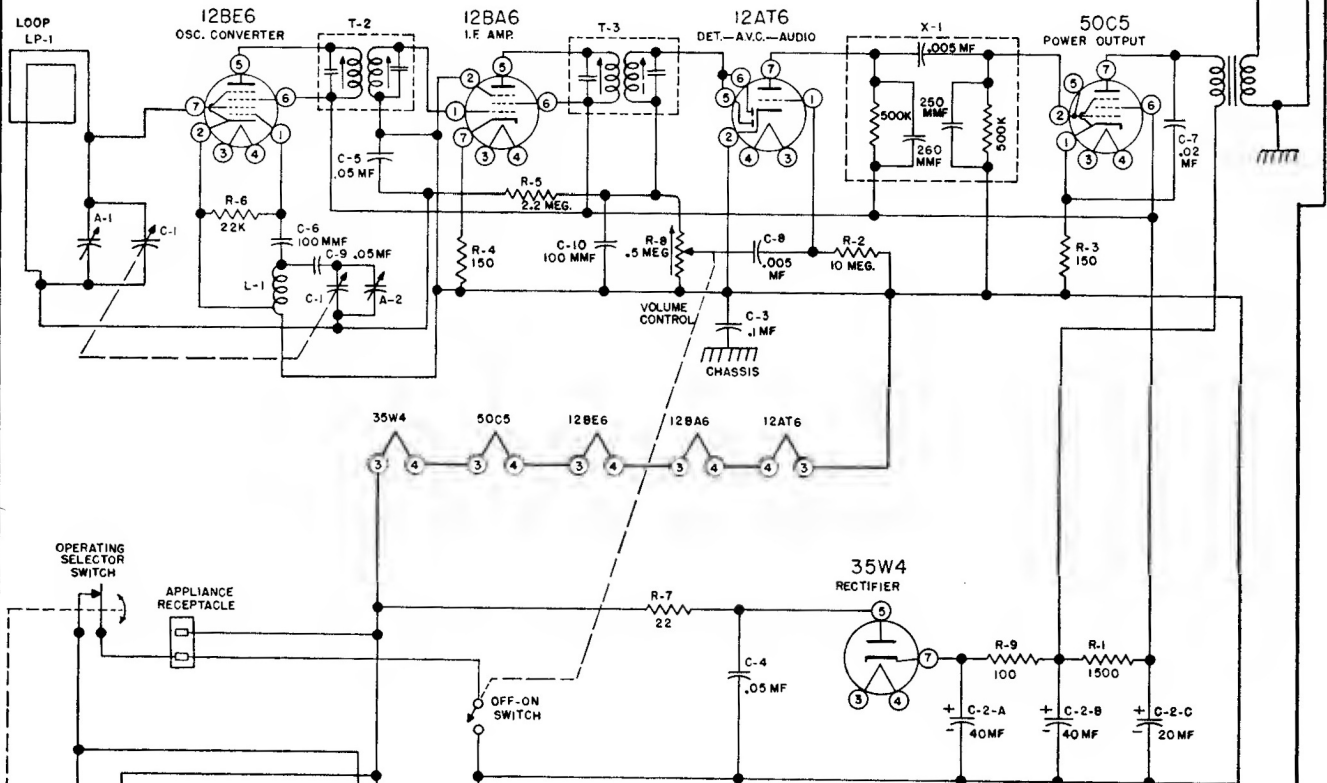


MANUAL OF 1952 MOST-OFTEN-NEEDED RADIO DIAGRAMS

STROMBERG - CARLSON RADIO

NO. C-1

4" PM SPEAKER



RESISTORS

Circuit Symbol	S-C Part No.	Description
R-1	149134	1500 ohms — 1 W — 20%
R-2	149125	10 megohms — 1/2 W — 20%
R-3	149096	150 ohms — 1/2 W — 20%
R-4	149096	150 ohms — 1/2 W — 20%
R-5	149121	2.2 megohms — 1/2 W — 20%
R-6	149109	22K ohms — 1/2 W — 20%
R-7	149091	22 ohms — 1/2 W — 20%
R-8	81780	.5 megohms — Potentiometer
R-9	149095	100 ohms — 1/2 W — 20%

CAPACITORS

Circuit Symbol	S-C Part No.	Description
C-1	81778	Variable Condenser
C-2	81779	40-40-20 MF. — 150 V Electro.
C-3	110724	.1 MF — 400 V
C-4	110801	.05 MF — 400 V
C-5	110801	.05 MF — 400 V
C-6	110291	100 MMF — 500 V
C-7	110542	.02 MF — 400 V
C-8	110805	.005 MF — 200 V
C-9	110801	.05 MF — 400 V
C-10	110291	100 MMF — 500 V

ALIGNMENT PROCEDURE

- Output meter across voice coil (3.2 ohm).
- Volume control at maximum for all adjustments.
- Align for maximum output. Reduce input as needed to keep output near 1.28 volts (0.5 watt).

SIGNAL GENERATOR

Frequency	Coupling Capacitor	Connections to Receiver	Ground Connection
455 kc	0.1 mfd.	12BE6 grid	B —
1650 kc	0.1 mfd.	12BE6 grid	B —
1500 kc		Radiating Loop	

TUNER SETTING

Rotor full open
(Plates out of mesh)

Rotor full mesh
(Plates in mesh)

1500 kc

ADJUST TRIMMERS TO MAXIMUM OUTPUT (in order shown)

input and output slugs of 1F cans

Oscillator trimmer A2

Antenna trimmer A1