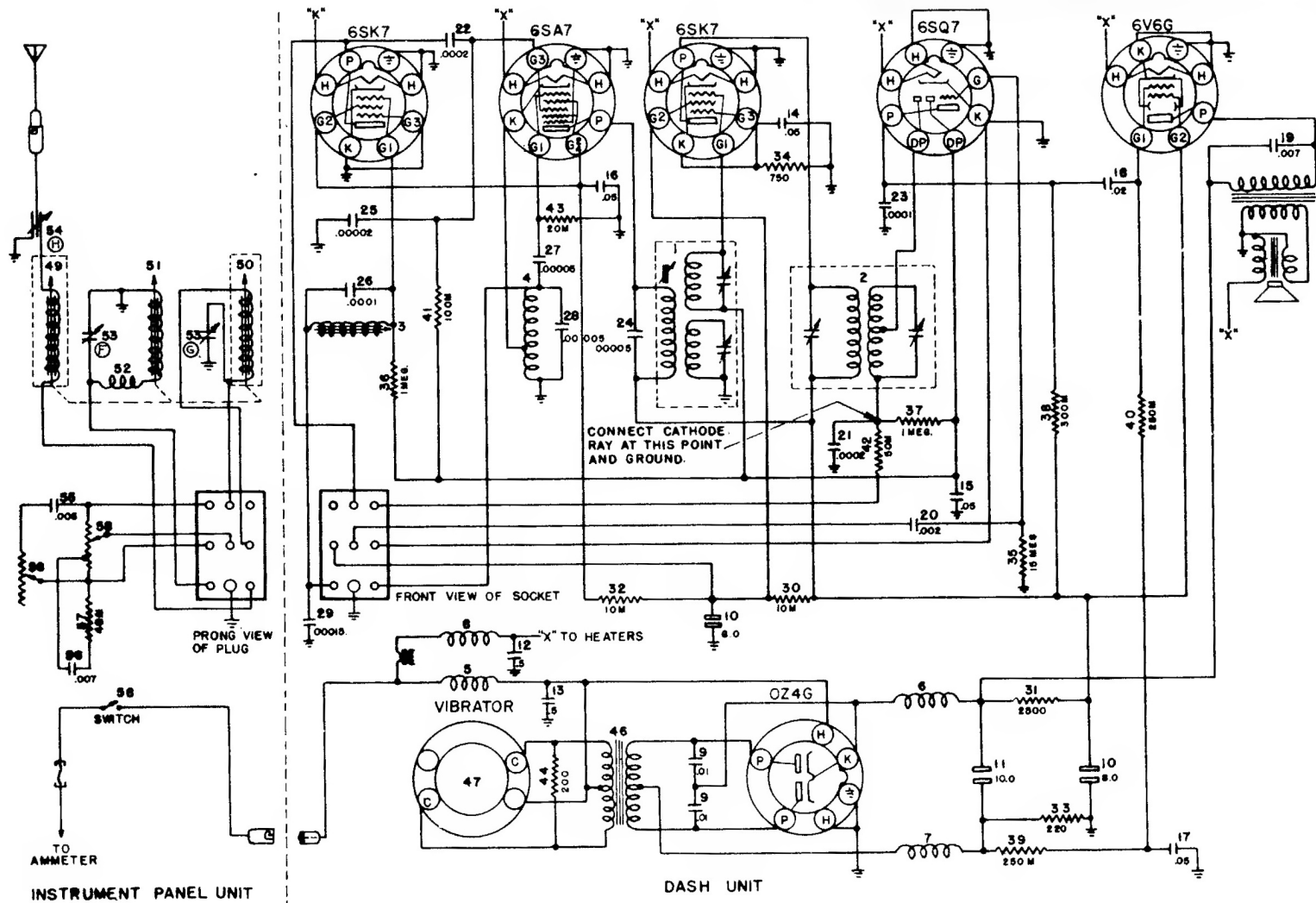


DELCO MODEL R-678 CIRCUIT DIAGRAM



I.F. 455 KC.

DELCO MODEL R-678 CIRCUIT DIAGRAM

Tuning is accomplished by means of the conventional manual control or by means of five push-buttons which mechanically adjust the position of the iron cores in the tuning coils, tuning the radio to preselected frequencies

## UNITED MOTORS SERVICE INCORPORATED

VOLTAGE READINGS TAKEN BETWEEN SOCKET  
TERMINALS AND GROUND WITH D.C. VOLTMETER  
HAVING RESISTANCE OF 1000 OHMS PER VOLT.  
ALL READINGS TAKEN WITH 5.9 FILAMENT VOLTAGE  
AT TUBES.

CURRENT DRAIN WITH SPEAKER & DIAL LIGHT 6.7 AMPS.  
"B" SUPPLY DRAIN 50 M.A.

