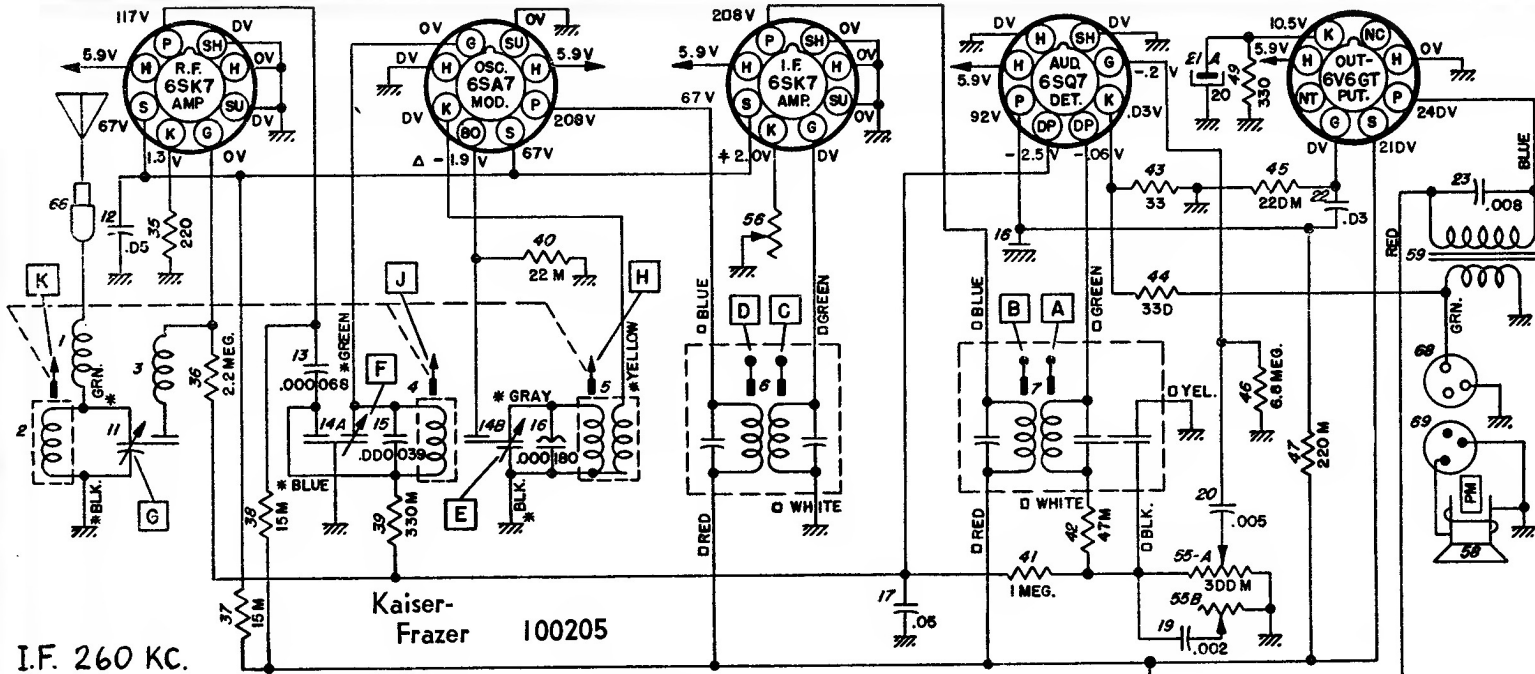


UNITED MOTORS

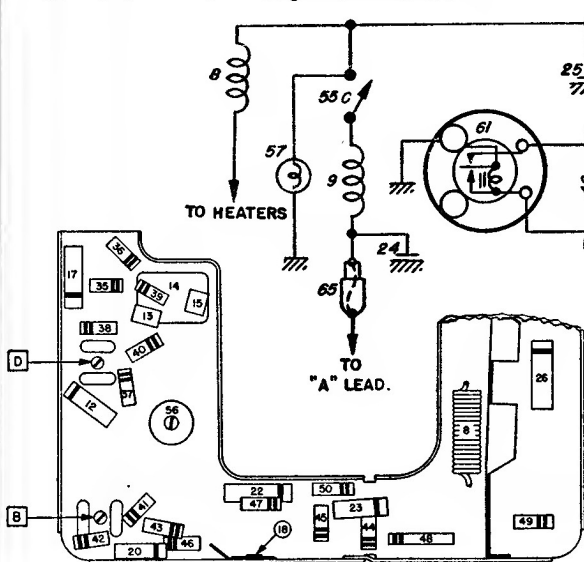
KAISER-FRAZER PART NO. 100205

All 1951 Henry J cars.



I.F. 260 KC.

Kaiser-Frazer 100205



PARTS LAYOUT—CHASSIS VIEW

ALL VOLTAGES MEASURED FROM SOCKET TERMINALS TO CHASSIS WITH A 20,000 OHM PER VOLT VOLTMETER. MEASUREMENTS TAKEN WITH NO SIGNAL AND 6.0 VOLTS AT SPARK PLATE.

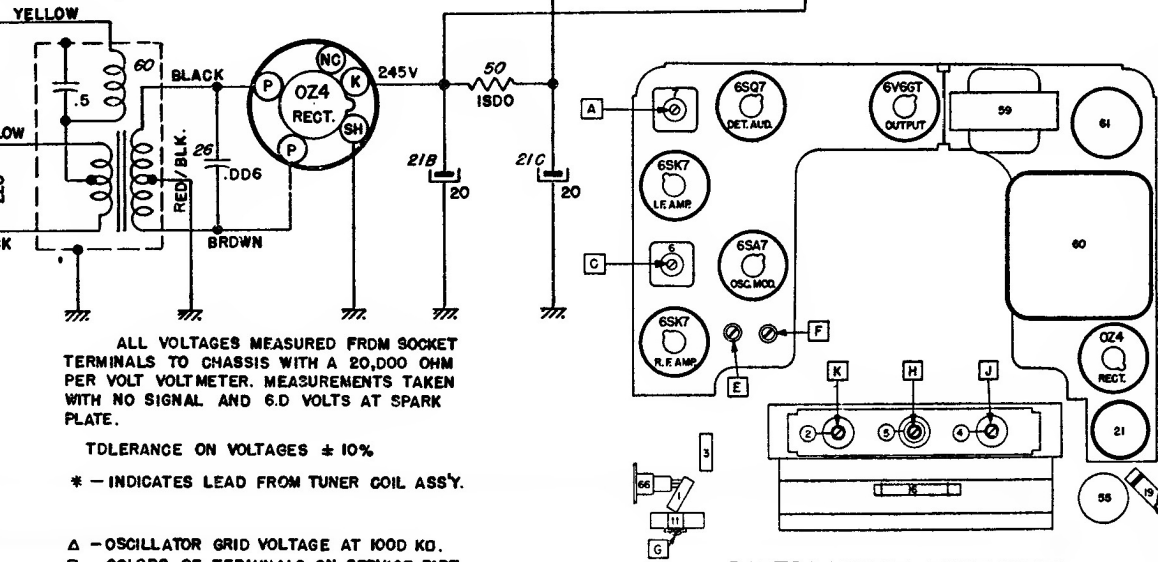
TOLERANCE ON VOLTAGES $\pm 10\%$

* — INDICATES LEAD FROM TUNER COIL ASSY.

Δ — OSCILLATOR GRID VOLTAGE AT 1000 KC.

□ — COLORS OF TERMINALS ON SERVICE PART

‡ — VARIES WITH SENSITIVITY SETTING.



PARTS LAYOUT—TUBE VIEW