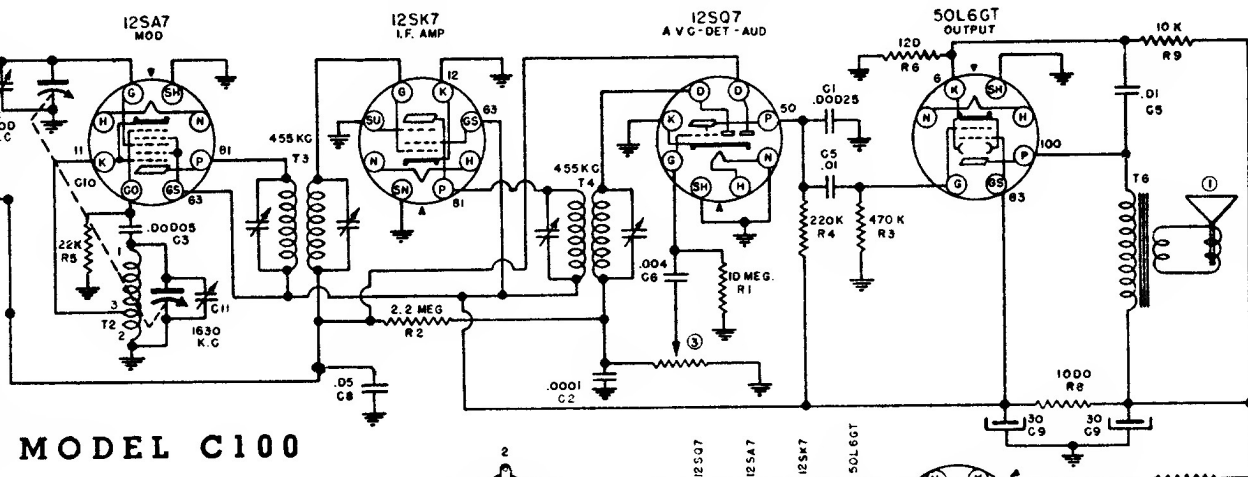
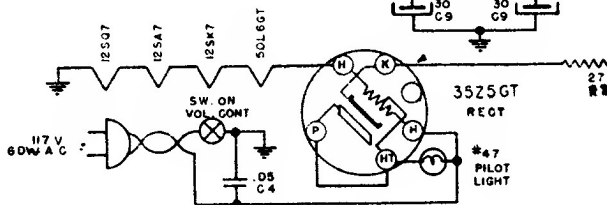
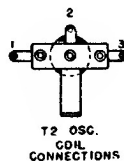


WARWICK MANUFACTURING CORPORATION



MODEL C100

TUBE SOCKETS ARE VIEWED FROM UNDERSIDE OF CHASSIS VOLTAGE READINGS INDICATED AT SOCKET TERMINAL ARE TO CHASSIS WITH 1000 OHM PER VOLT METER, WITH NO SIGNAL ON 117 VOLT LINE WHERE NO VOLTAGE IS SHOWN, IT INDICATES ZERO VOLTAGE OR A VERY LOW READING ALIGNMENT IS TO BE MADE AT THE FREQUENCY SHOWN AT EACH TRIMMER CONDENSER CAPACITY VALUES ARE IN MICROFARADS.

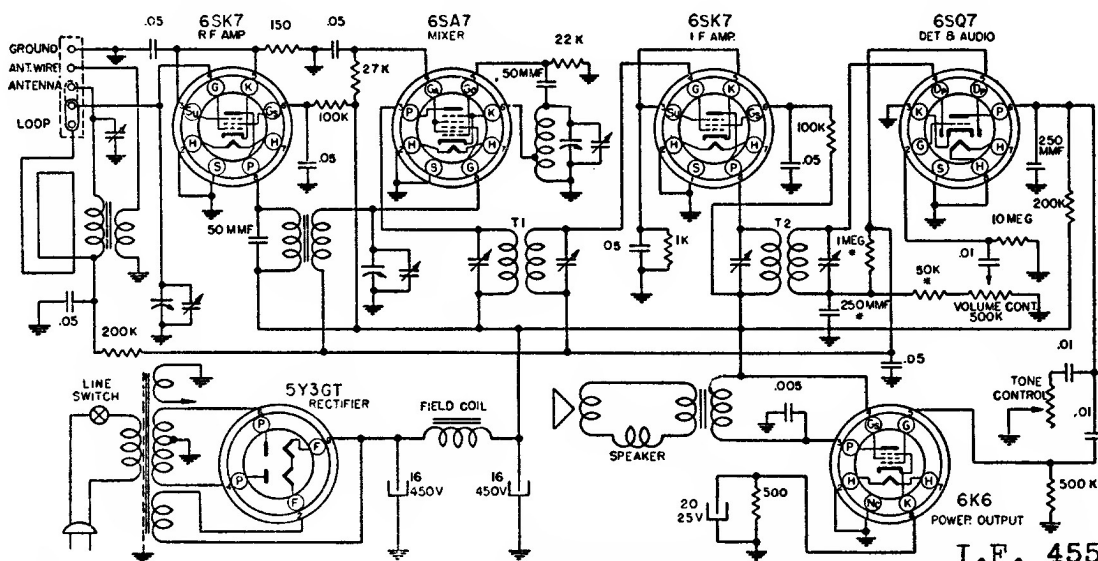


CODE	PART NO.	DESCRIPTION	CODE	PART NO.	DESCRIPTION
R 1		10 MEGOHM 1/4 WATT RESISTOR	C 1		00025 MFD MICA CONDENSER
R 2	2.2	" " " "	C 2		0001 " " " "
R 3	470K	" " " "	C 3		00005 " " " "
R 4	220K	" " " "	C 4		.05 MFD. 400V TUBULAR CONDENSER
R 5	2.2 K	" " " "	C 5		.01 " " " "
R 6	120	" " " "	C 6		.004 " " " "
R 7	27	" " " "	C 7		.05 " " " "
R 8	1000	1/2 WATT " "	C 8		.05 " " " "
R 9	10 K	1 WATT " "	C 9		30 X 30 MFD 150 WV ELECTROLYTIC
			C 10		2 GANG VARIABLE CONDENSER (ALSO C1' 9 C12)

Model C101 is similar to C100, but uses a record player.

WARWICK MANUFACTURING CORPORATION

MODEL C104



* PART OF T2

I.F. 455 KC.

Model C105 is similar to C104, but uses a record player