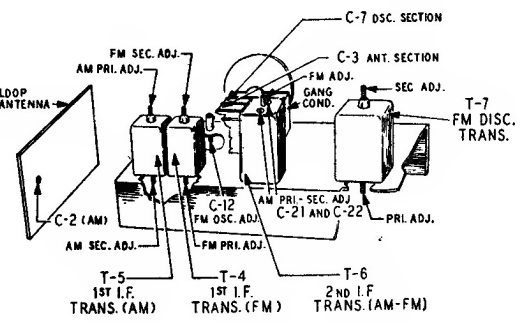
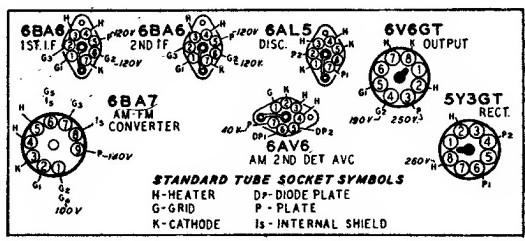
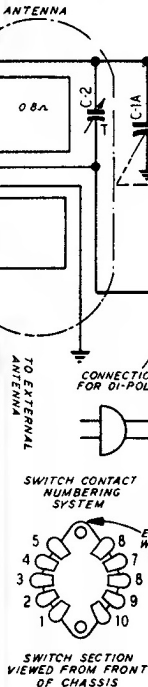


**AM I.F. 455 KC.  
FM I.F. 10.7 MC.**

**NOTE:**  
COIL WINDINGS FOR WHICH NO RESISTANCES ARE SHOWN HAVE A D.C. RESISTANCE OF LESS THAN 1 Ω.



**Western Auto Supply Co.  
Tru-tone Model D1946  
(Factory 26A94-852)**