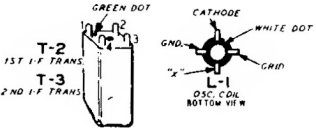
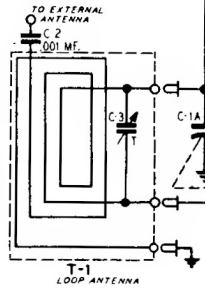
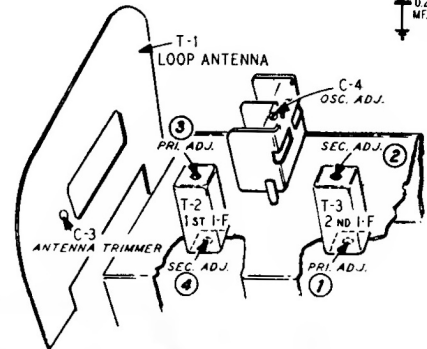
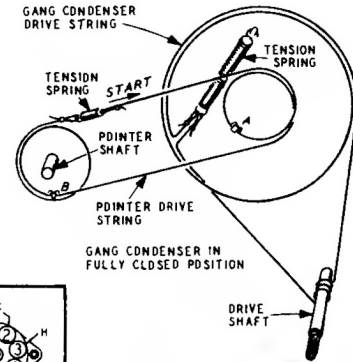
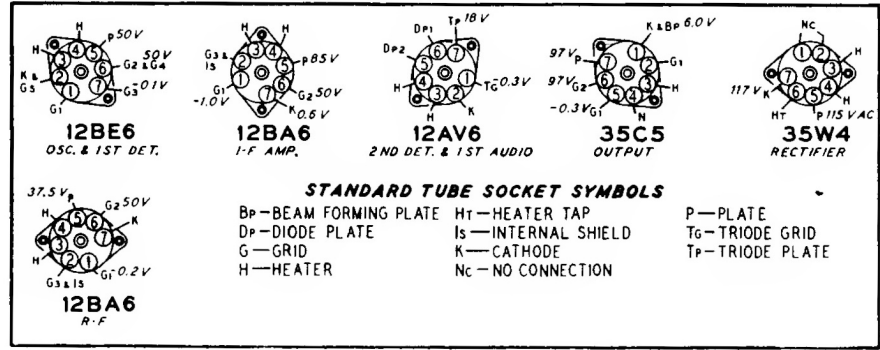


Intermediate Frequency  
455 KC



### TUBE SOCKET VOLTAGES

Socket voltages are shown on the Bottom Socket diagram at the tube socket terminals. All voltages are between the socket terminal and "X" point. Plate, screen and cathode voltages were taken with a 1000 ohm-per-volt meter with a 300 volt scale used for plate and screen voltages. Audio grid voltages were read with a vacuum tube volt-meter.



*Truetone*

**MODEL D2237A**  
**FACTORY MODEL 325D27-202**

**WESTERN AUTO SUPPLY CO**