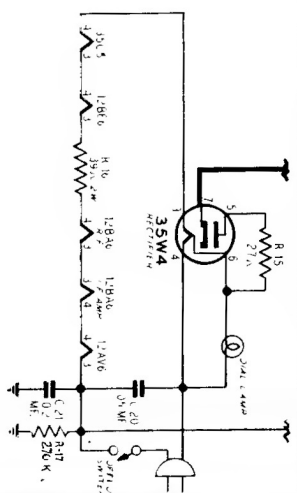


**TUBE SOCKET VOLTAGES**

Socket voltages are shown on the Bottom Socket diagram at the tube socket terminals. All voltages are between the socket terminal and chassis ground. Plate, screen and cathode voltages were taken with a 1000 ohm-per-volt meter with a 300 volt scale used for plate and screen voltages. Audio grid voltages were read with a vacuum tube volt-meter.



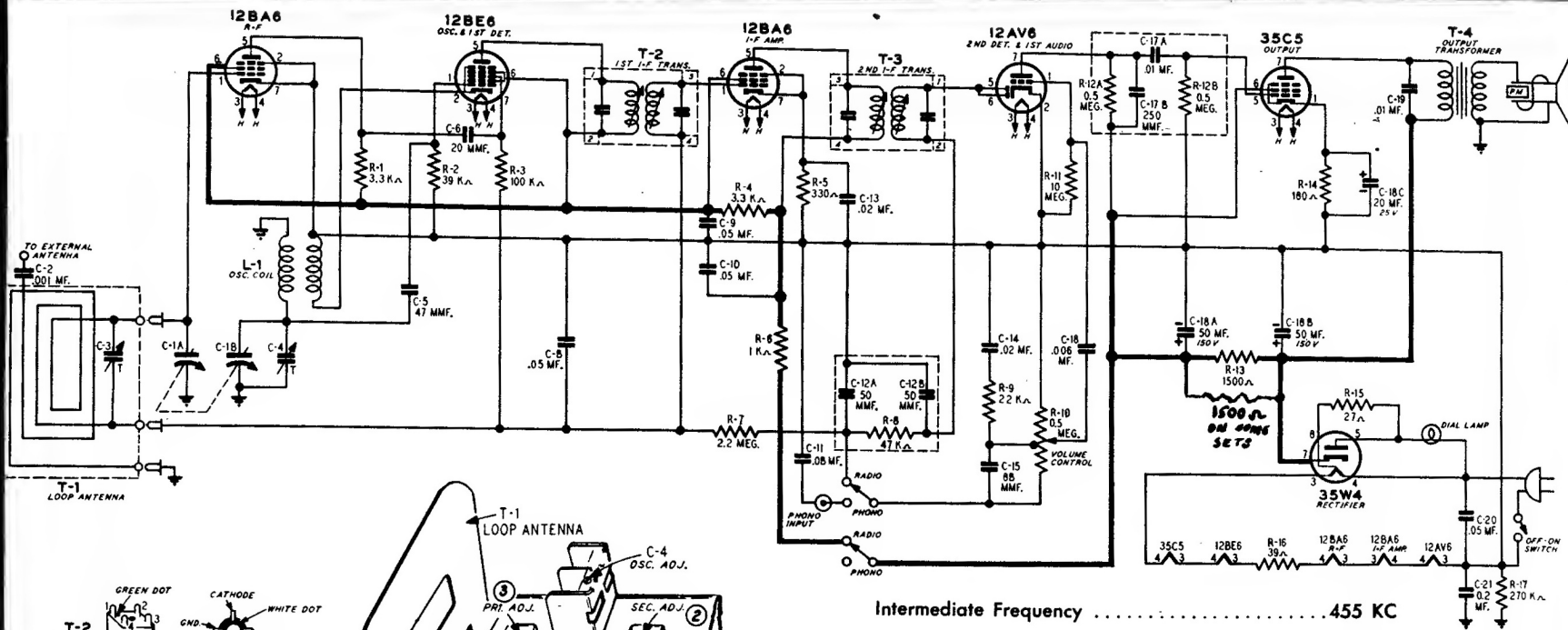
These models with a suffix "A" had another 1500-ohm resistor wired in parallel with R-15, and had the rectifier tube 35W4 wired as shown in the partial schematic, below. In models with a suffix "B" a single 750-ohm resistor was used for R-15, and the 35W4 was wired as shown.

**MODEL D2017 (WALNUT)**  
**MODEL D2018 (IVORY)**  
**FACTORY MODEL 25D26-006**  
**FACTORY MODEL 225D26-002**

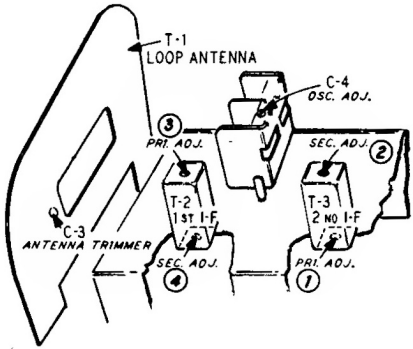
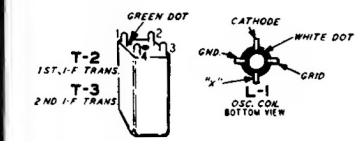
Trafalgar

REG. U.S. PAT. OFF.

Western Auto Supply Co.



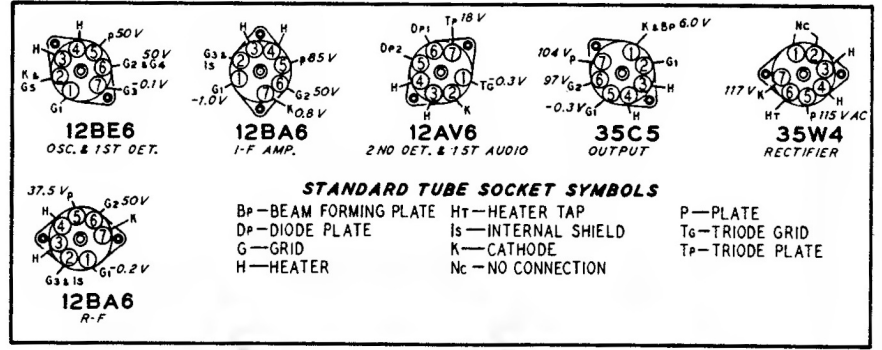
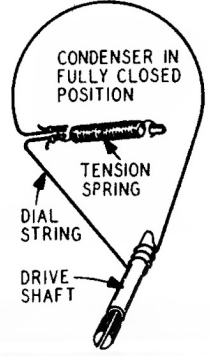
Intermediate Frequency ..... 455 KC



### Western Auto

### DRIVE CORD REPLACEMENT

Turn the large drive pulley to the fully closed position. Use a new 10x75 drive cord assembly or a piece of cord 15 inches long and fasten one end to the tension spring and fasten the other end of the spring to the drive pulley. Install the cord as shown in the illustration. Wind 2 3/4 turns counterclockwise around the tuning shaft with the turns progressing toward the front of the chassis. After string is installed, stretch the tension spring and fasten free end of cord to spring.



*tru-tone*  
REG. U. S. PAT. OFF.

**MODEL D2017 (WALNUT)**  
**FACTORY MODEL 25D26-006**

**MODEL D2018 (IVORY)**  
**FACTORY MODEL 225D26-002**