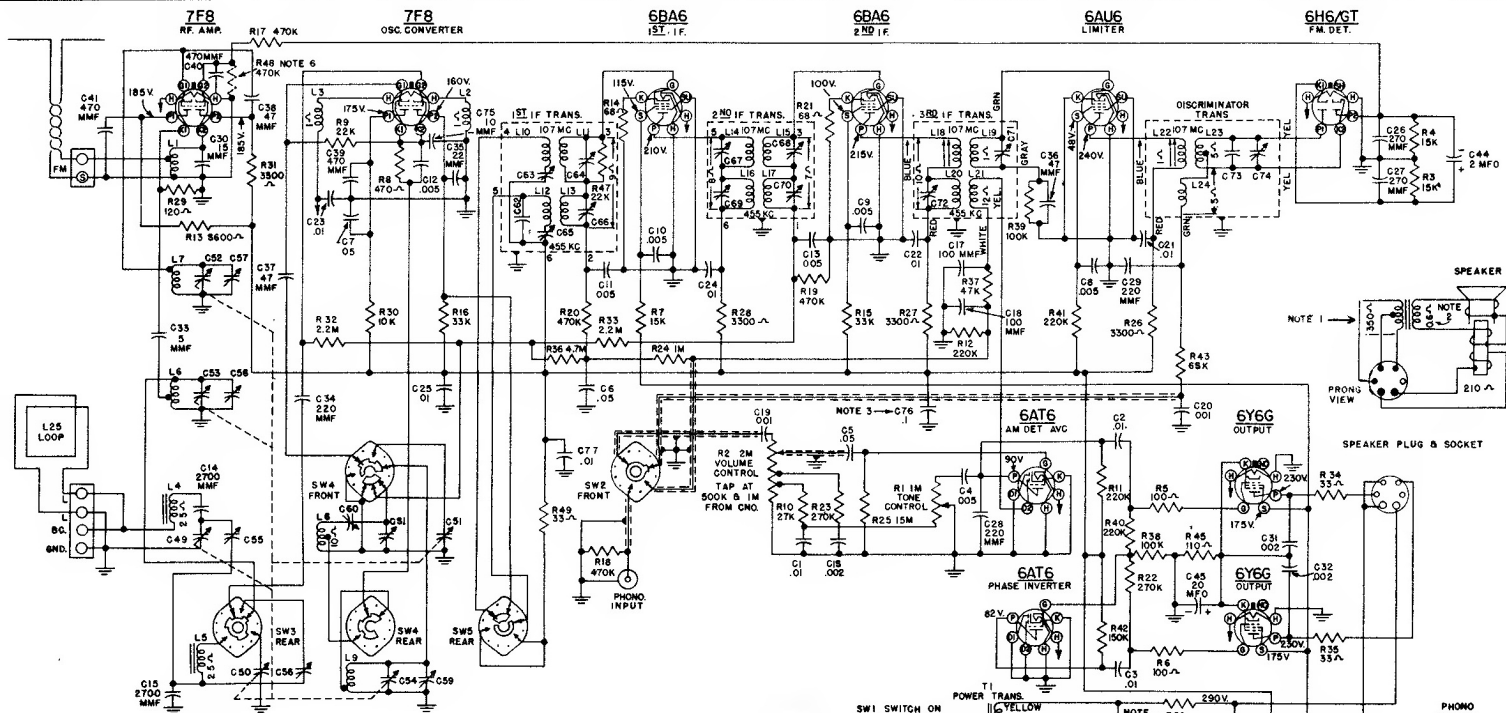


H-164

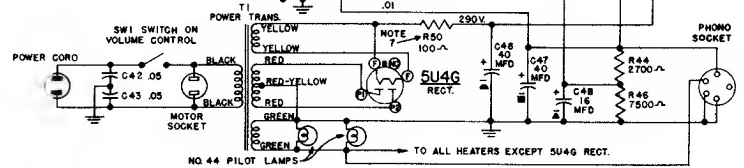
H-166 & H-166A

Westinghouse
RADIO TELEVISION

H-167



- NOTES:
1. SPEAKER PLUG REMOVED.
 2. VOICE COIL DISCONNECTED.
 3. IN EARLY MODELS TWO 0.2 MFO CAPACITORS IN PARALLEL WERE SUBSTITUTED FOR 0.1 MFO ELECTROLYTIC (RESONANT TYPE) CTS.
 4. SELECTOR SWITCH SHOWN IN EXTREME COUNTER CLOCKWISE POSITION OR FM BAND. SECOND POSITION CLOCKWISE IS AM BAND. THIRD POSITION CLOCKWISE IS PHONO.
 5. ALL VOLTAGES MEASURED FROM CHASSIS (GND) USING 20,000 OHMS/VOLT METER LINE VOLTAGE 117 V.A.C. VOLTAGES SHOULD BE AS SHOWN ± 20 PERCENT.
 6. USED IN EARLY MODELS.
 7. USED ONLY WITH Y-3295 POWER TRANSFORMER.

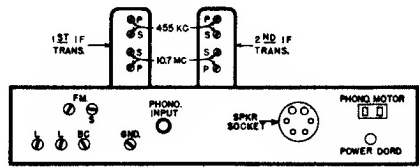


FREQUENCY RANGES:

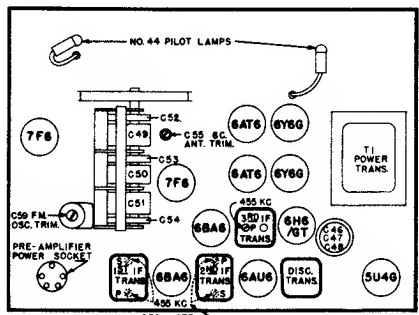
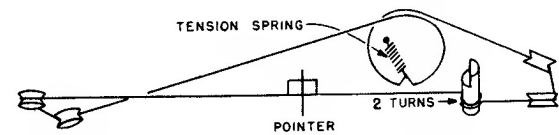
Standard Broadcast 540 to 1600 kc.
 Frequency Modulation 88 to 108 mc.

INTERMEDIATE FREQUENCIES:

Amplitude Modulation 455 kc.
 Frequency Modulation 10.7 mc.



REAR VIEW OF MAIN CHASSIS



NOTE:
 A FEW EARLY MODELS (CHASSIS V-2119) HAD 151 AND E 32 IF TRANSFORMER ADJUSTMENTS AS SHOWN BY DOTTED LINE.