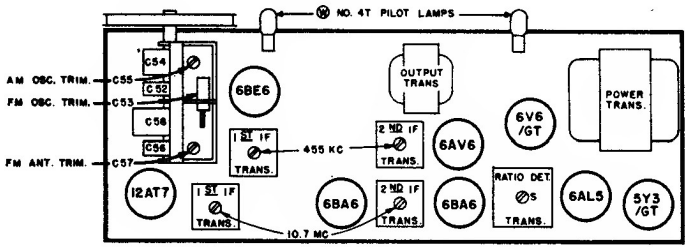
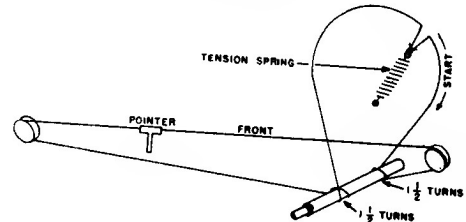
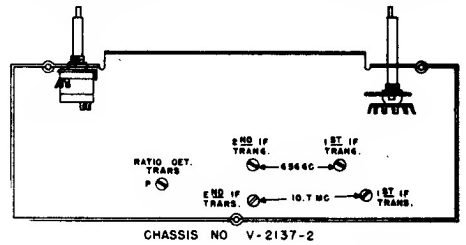


Westinghouse Electric Corporation

Model H-198, Chassis V-2137-2

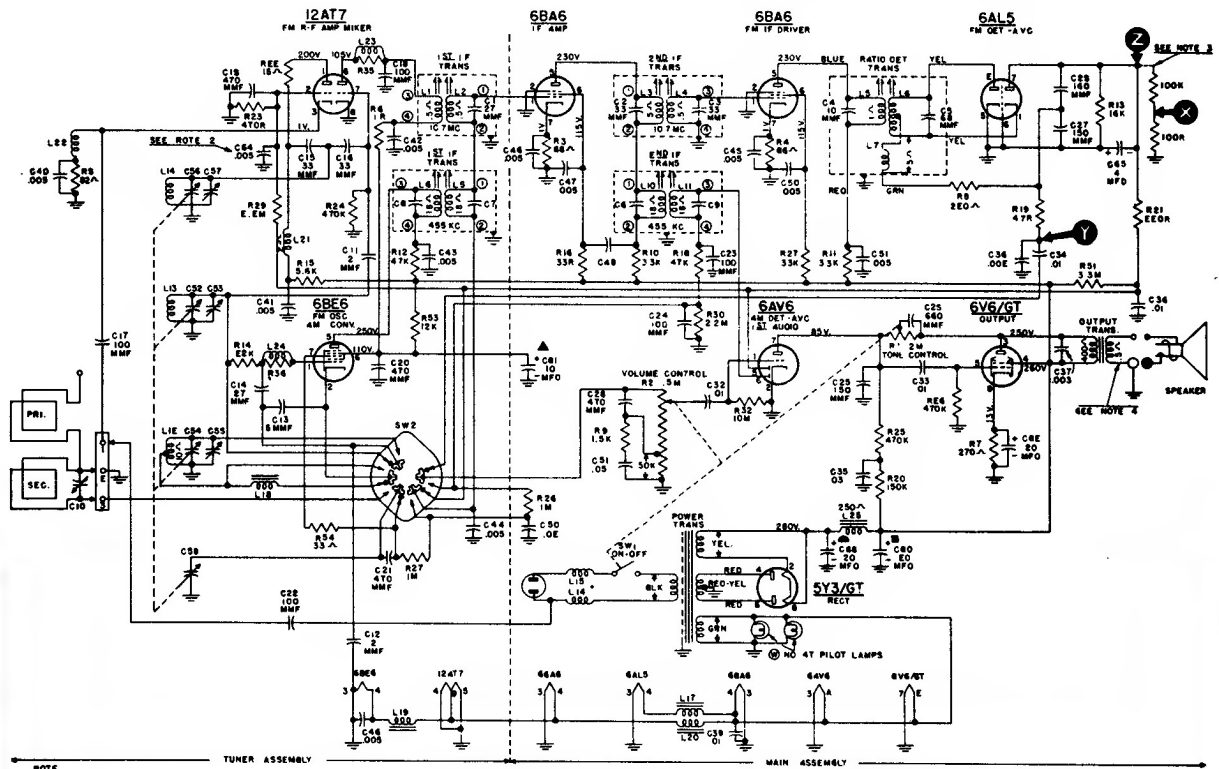


ALIGNMENT Broadcast Band

Connect an output meter across the speaker voice coil.

While making the following adjustments, keep the volume control set for maximum output, the tone control set for maximum treble, and the signal generator output attenuated to avoid A.V.C. action.

Step	Connect Signal Generator to —	Signal Generator Frequency	Radio Dial Setting	Adjust
1	Set the band switch to AM.			
2	Stator of tuning capacitor (C58) through a 0.1 mfd capacitor	455 kc.	maximum capacity	455 kc. pri. and sec. of 1st and 2nd I-F trans. for max. output
3	Radiated signal (no actual connection)	1600 kc.	1600 kc.	AM osc. trimmer (C55) for max. output
4	Radiated signal (no actual connection)	1400 kc.	tune to signal	AM ant. trimmer (C10, located on rear cover) for max. output (rock-in adjustment)



NOTE
 1 SELECTOR SWITCH SW2 IS SHOWN IN EXTREME COUNTER CLOCKWISE POSITION ON FM BAND
 2 FIRST POSITION CLOCKWISE IS AM BAND
 3 NOT USED IN EARLY CHASSIS.
 4 VOICE COIL DISCONNECTED
 5 ALL VOLTAGES MEASURED FROM CHASSIS (GND) USING A 20,000 OHM/VOLT METER.
 6 LINE VOLTAGE 117 V.A.C. VOLTAGES SHOULD BE AS SHOWN ± 20 PER CENT.