

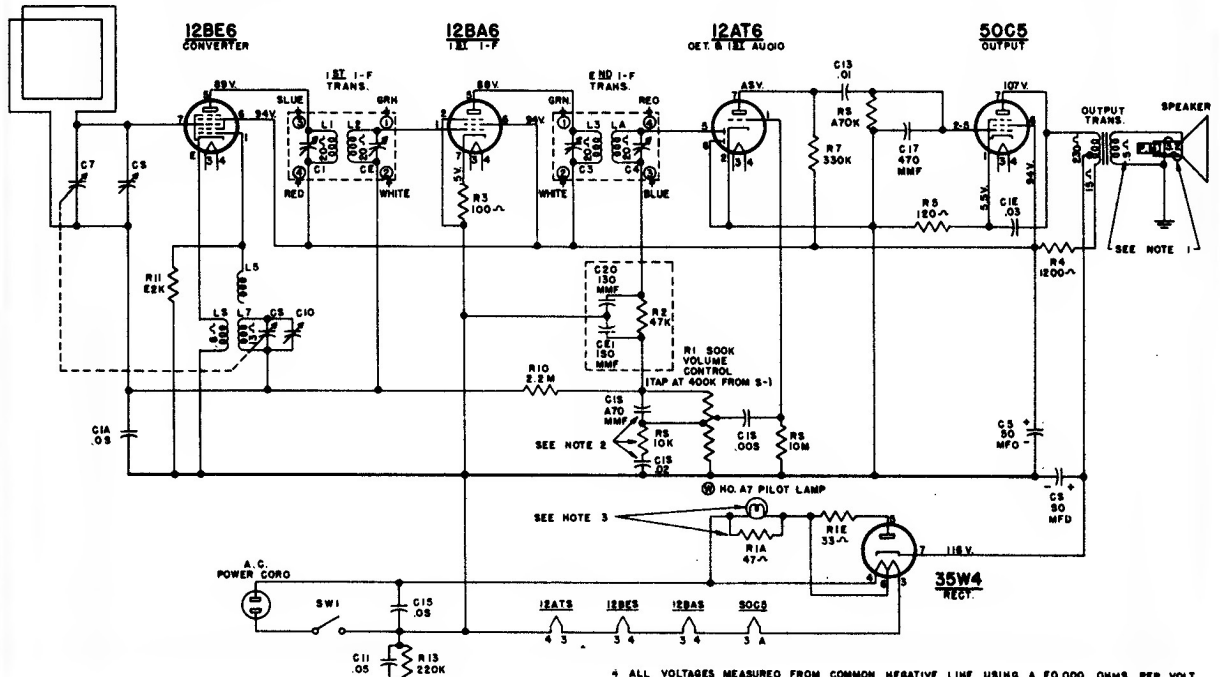
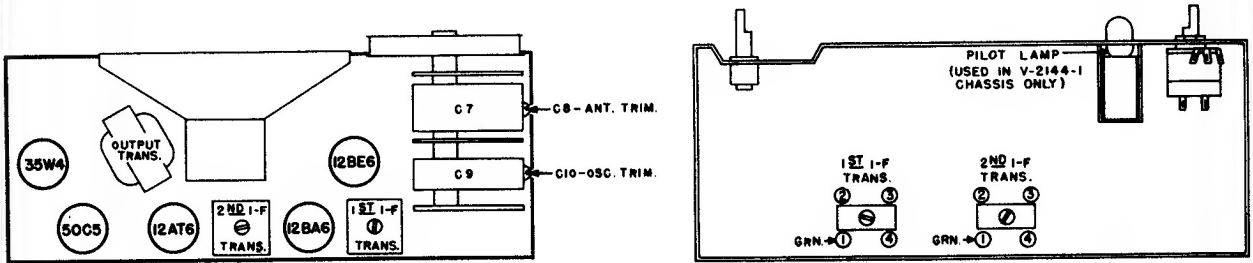
Westinghouse Electric Corporation Models H-210 and H-211

Chassis V-2144 and V-2144-1

ALIGNMENT

While making the following adjustments, keep the volume control set for maximum output and the signal generator output attenuated to avoid AVC action.

Step	Connect Signal Generator to —	Signal Generator Frequency	Radio Dial Setting	Adjust
1.	Stator of R-F tuning capacitor (C7) through a 0.1 mfd capacitor	455 kc.	maximum capacity	Pri. and sec. of 1st and 2nd I-F transformers for max. output
<p><i>NOTE: If the I-F transformers are badly mis-aligned, it may be impossible to obtain sufficient output to use the above system. In this event, it will be necessary to align each transformer separately. Start with the last I-F transformer and work forward, connecting the signal generator to the control grid of the tube preceding the transformer under alignment.</i></p>				
2.	Radiated signal (no actual connection)	1615 kc.	minimum capacity	Osc. trimmer (C10) for max. output
3.	Radiated signal (no actual connection)	1400 kc.	1400 kc.	Ant. trimmer (C8) for max. output



NOTE:
 1. VOICE COIL DISCONNECTED FOR RESISTANCE MEASUREMENT.
 2. C10, C19 AND R8 ARE NOT USED IN V-2144 CHASSIS (H-E10).
 3. THE PILOT LAMP IS USED IN THE V-2144-1 CHASSIS (H-211) ONLY. R14 IS USED IN THE V-2144 CHASSIS (H-E10) IN PLACE OF THE PILOT LAMP.

4 ALL VOLTAGES MEASURED FROM COMMON NEGATIVE LINE USING A 20,000 OHMS PER VOLT METER. LINE VOLTAGE 117 V.A.C. VOLTAGES SHOULD BE AS SHOWN ± 20 PER CENT.