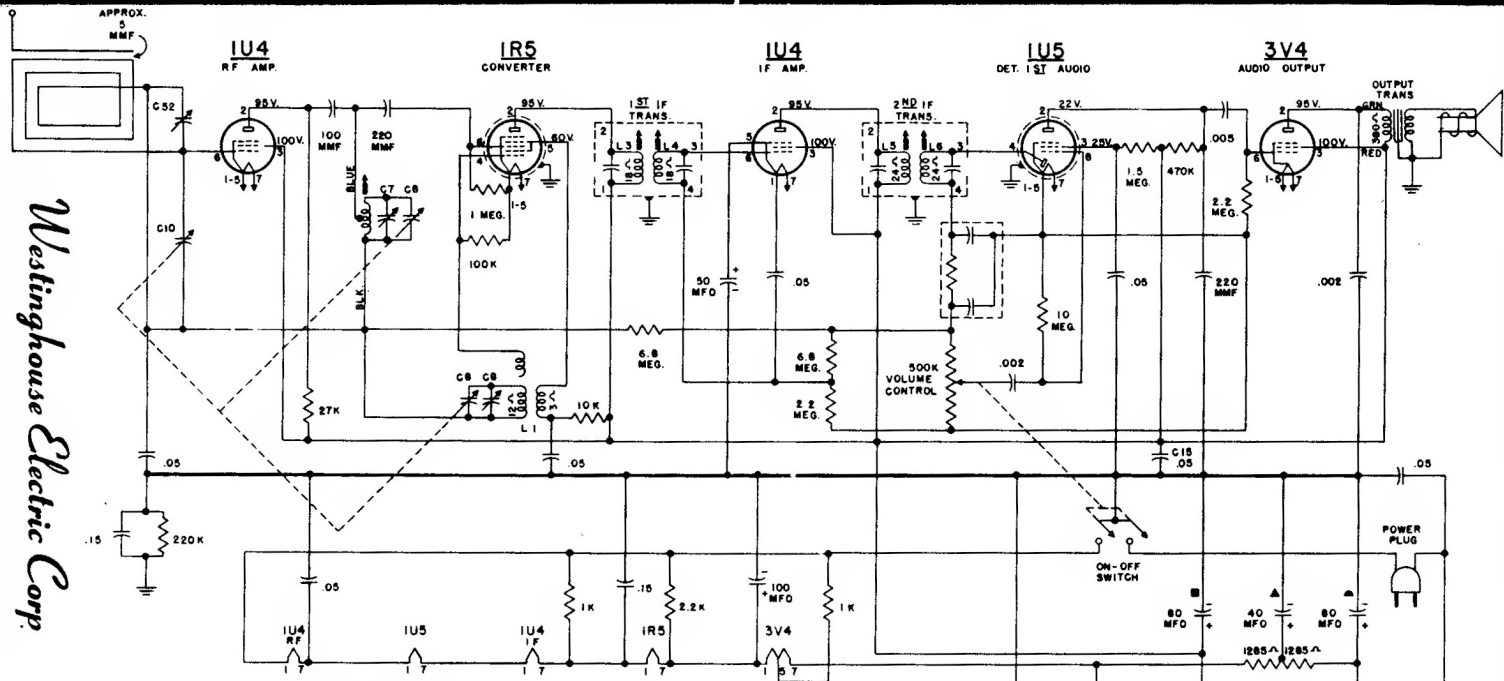


# MODEL H-302PP5 CHASSIS V-2151-1

*Westinghouse Electric Corp.*



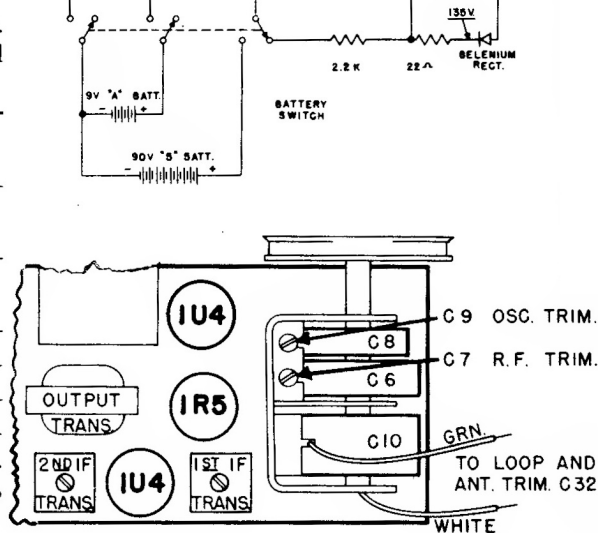
## ALIGNMENT

It is recommended that the chassis be isolated from the power line by means of an isolation transformer. While making the following adjustments, keep the volume control set for maximum output and the signal generator output attenuated to avoid AVC action.

Step	Connect Signal Generator to—	Signal Generator Frequency	Radio Dial Setting	Adjust for Maximum Output—
1	Pin No. 6 of the 1R5 converter through a 200 mmf capacitor	455 kc.	Minimum capacity	Top and bottom slugs in 2nd and 1st 1-F trans. in order given*
2	Stator of antenna tuning section of gang (C10) through a 200 mmf capacitor	1615 kc.	Minimum capacity	Osc. trimmer (C9)
3	Same as step 2	1400 kc.	1400 kc.	R-F trimmer (C7)
4	Same as step 2	600 kc.	600 kc.	Slug of R-F coil (L2)**
5	Recheck steps 3 and 4			
6	Radiated signal	1400 kc.	1400 kc.	Antenna trimmer (C32)

\* It is recommended that a fiber aligning tool that snugly fits the slot in the powdered iron core be used to prevent chipping of the slot.

\*\* A 10/32" Allen wrench can be used to adjust the slug in L2.



NOTES:  
1. BATTERY SWITCH IS OPERATED BY PLUGGING POWER PLUG INTO SOCKET IN CHASSIS.  
2. ALL VOLTAGES MEASURED FROM COMMON NEGATIVE USING A 50,000 OHM VOLT METER.  
LINE VOLTAGE SET AT 117 V. A.C. VOLTAGES SHOULD BE AS SHOWN ± 10 PER CENT.