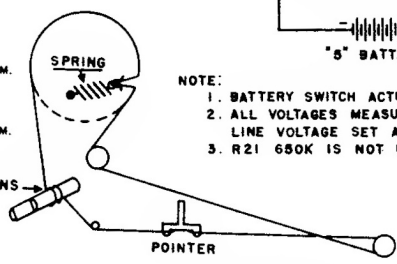
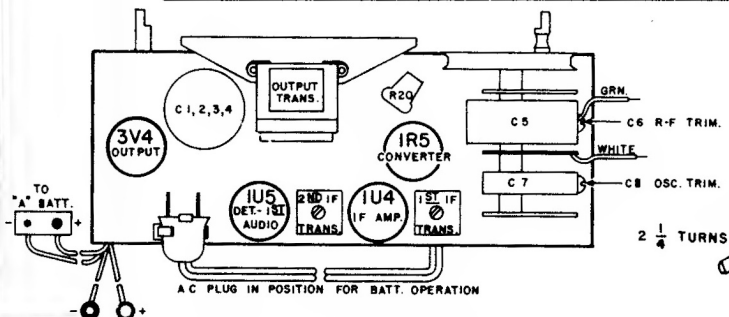
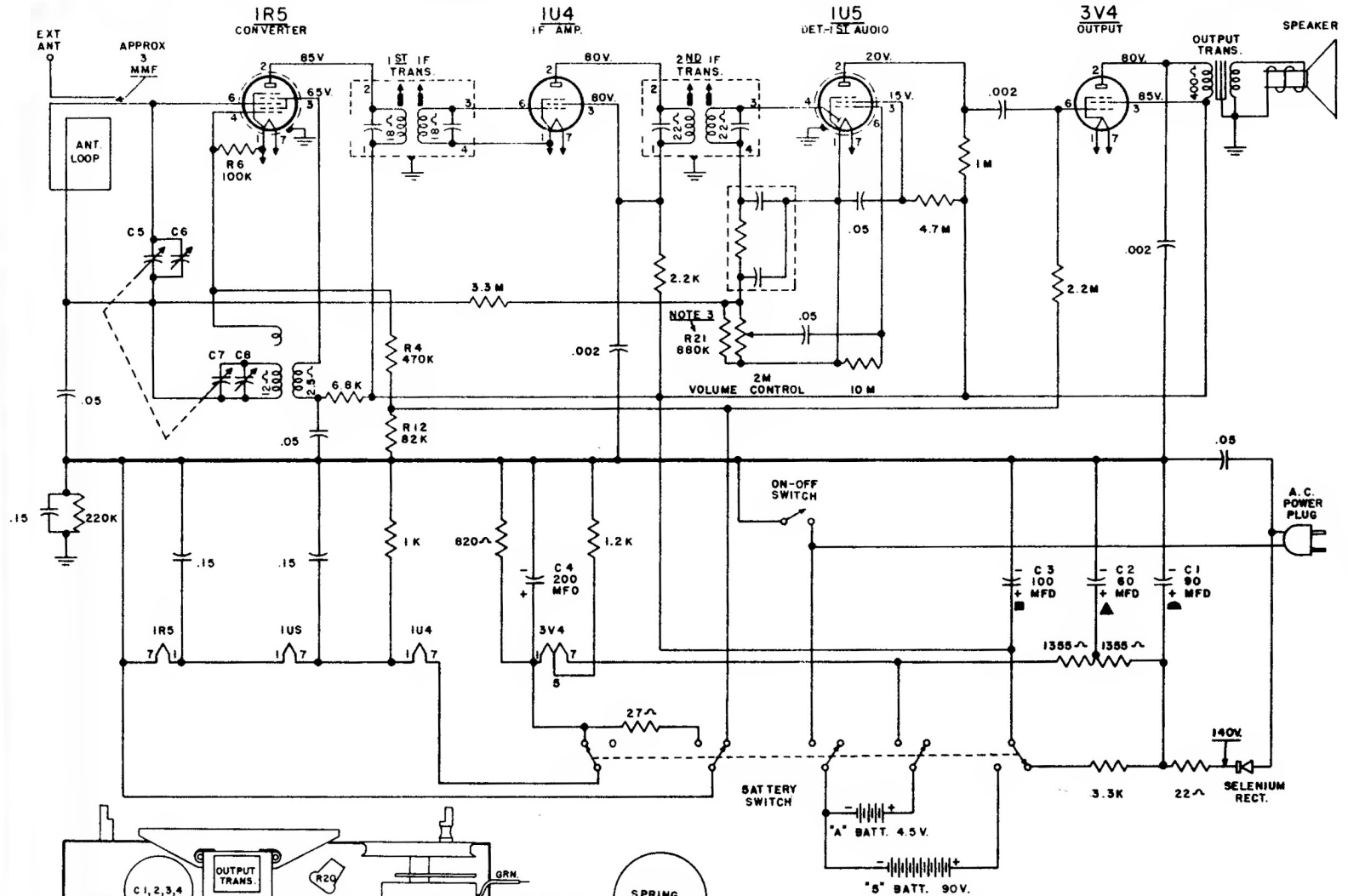


Westinghouse Electric Corporation
 Models H-303P4 and H-304P4
 Chassis V-2155



NOTE:
 1. BATTERY SWITCH ACTUATED BY POWER PLUG AND IS SHOWN IN NON-ACTUATED (PLUG OUT)
 2. ALL VOLTAGES MEASURED FROM COMMON NEGATIVE USING A 20,000 OHM/VOLT METER.
 LINE VOLTAGE SET AT 117 V.A.C. VOLTAGES SHOULD BE AS SHOWN \pm 20 PER CENT.
 3. R21 680K IS NOT USED WITH V-6198-1 VOLUME CONTROL.

INTERMEDIATE FREQUENCY: 455 kc.