

# Westinghouse Electric Corporation

H-310T5, H-311T5, H-310T5U, AND H-311T5U

V-2161 AND V-2161U CHASSIS

## ALIGNMENT

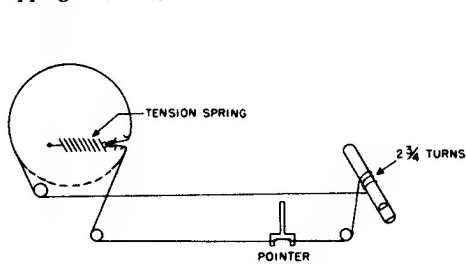
It is recommended that the chassis be isolated from the power line by means of an isolation transformer.

Make certain that the dial pointer is correctly positioned. When the gang is completely closed, the pointer should be over the small bump near the left end of the dial background.

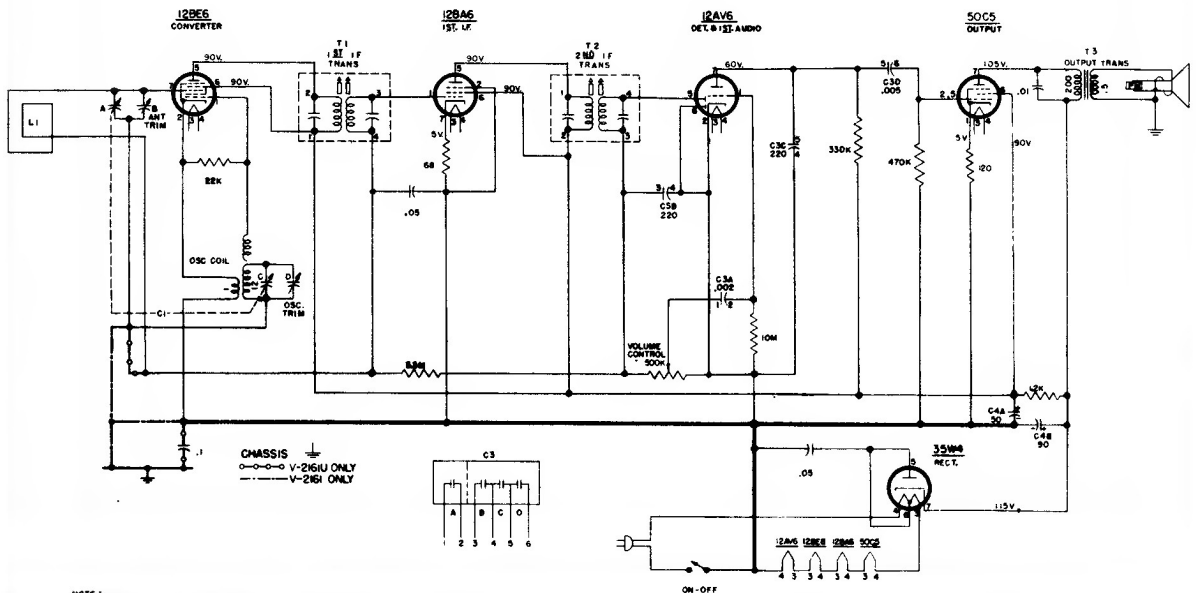
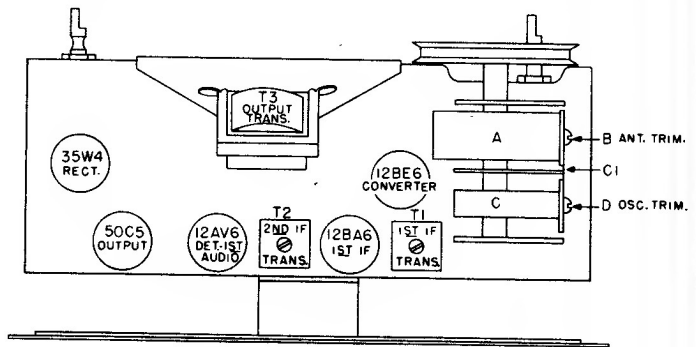
While making the following adjustments, keep the volume control set for maximum output and the signal generator output attenuated to avoid AVC action.

Step	Connect Signal Generator to —	Signal Generator Frequency	Radio Dial	Adjust for Maximum Output—
1	Stator of R-F tuning capacitor (A) through a 0.1 mfd capacitor	455 kc.	Minimum capacity	Top and bottom slugs in 2nd and 1st I-F trans. in order given *
2	Same as step 1	1615 kc.	Minimum capacity	Osc. trimmer (D)
3	Radiated Signal	1400 kc.	1400 kc.	Ant. trimmer (B)

\* It is recommended that a fiber aligning tool that snugly fits the slot in the powdered iron core be used to prevent chipping of the slot.



DIAL DRIVE



NOTE: 1. ALL VOLTAGES MEASURED FROM CHASSIS GROUND (V-2161 ONLY) OR COMMON NEGATIVE (V-2161U ONLY) USING A 20,000 OHM/VOLT METEN. LINE VOLTAGE SET AT 117 V. A.C. READINGS SHOULD BE AS SHOWN ± 20 PER CENT.