

Westinghouse

Models listed at left below correspond exactly to the circuit on this page.

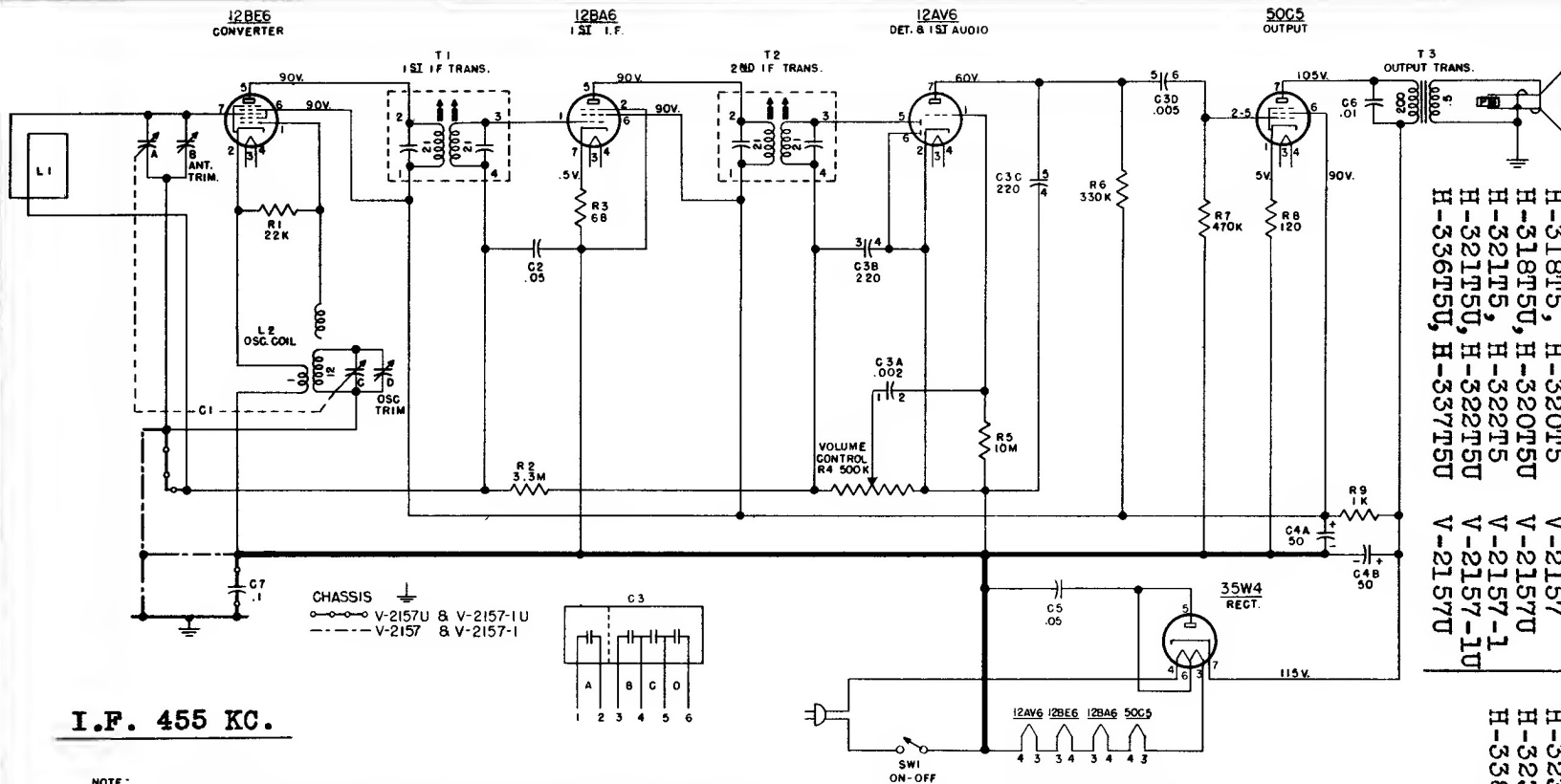
Models

Chassis

H-318T5,	H-320T5	V-2157
H-318T5U,	H-320T5U	V-2157U
H-321T5,	H-322T5	V-2157-1
H-321T5U,	H-322T5U	V-2157-1U
H-336T5U,	H-337T5U	V-2157U

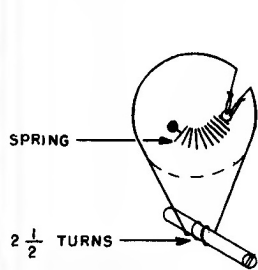
Similar models are listed below:

H-323T5, Chassis V-2157-2,
 H-323T5U, Chassis V-2157-2U,
 H-338T5U, H-341T5U, V-2157-4U.

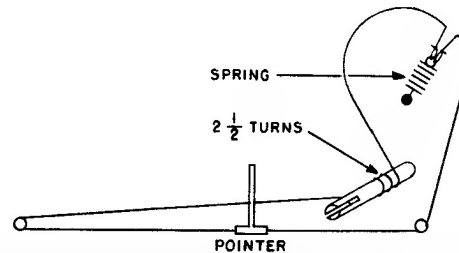
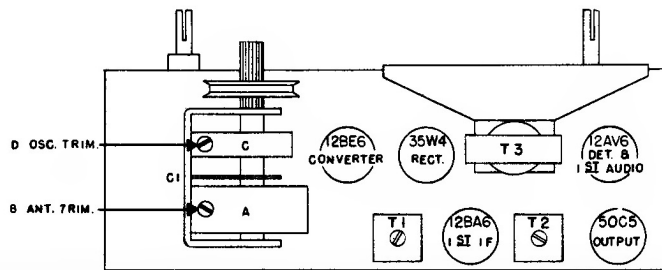


I.F. 455 KC.

NOTE: 1. ALL VOLTAGES MEASURED FROM CHASSIS GROUND (V-2157 & V-2157-1 ONLY) OR COMMON NEGATIVE (V-2157U & V-2157-1U ONLY) USING A 20,000 OHM/VOLT METER. LINE VOLTAGE SET AT 117 V.A.C. READINGS SHOULD BE AS SHOWN \pm 20 PER CENT.



DIAL DRIVE AND CHASSIS LAYOUT FOR V-2157 AND V-2157U CHASSIS



DIAL DRIVE FOR V-2157-1 AND V-2157-1U CHASSIS