

Westinghouse

Models listed at left below correspond exactly to the circuit on this page.

Models

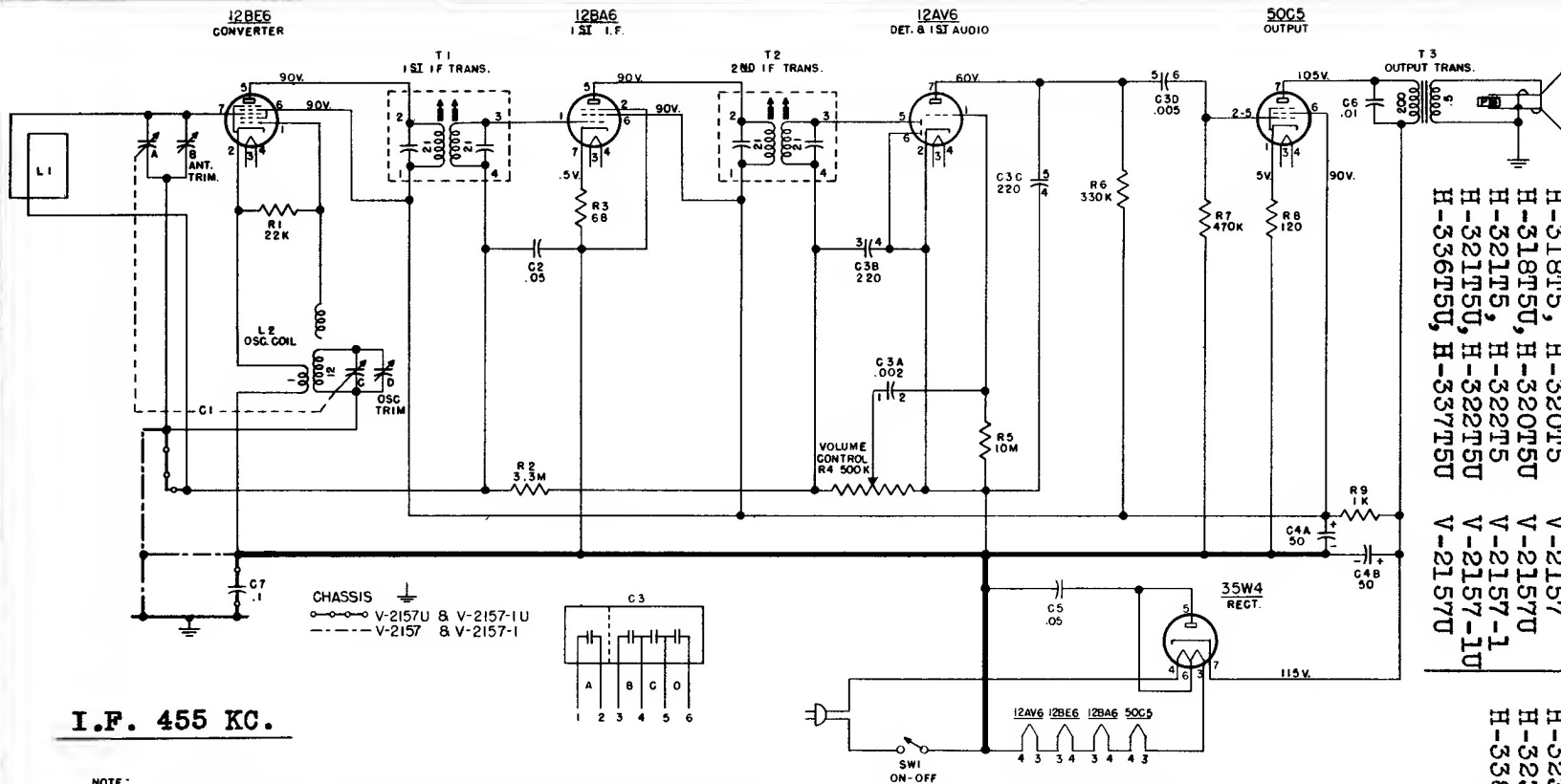
H-318T5, H-320T5
 H-318T5U, H-320T5U
 H-321T5, H-322T5
 H-321T5U, H-322T5U
 H-336T5U, H-337T5U

Chassis

V-2157
 V-2157U
 V-2157-1
 V-2157-1U
 V-2157U

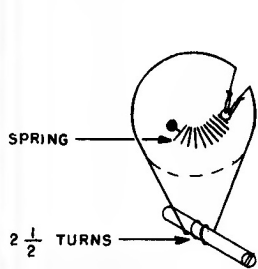
Similar models are listed below:

H-323T5, Chassis V-2157-2,
 H-323T5U, Chassis V-2157-2U,
 H-338T5U, H-341T5U, V-2157-4U.

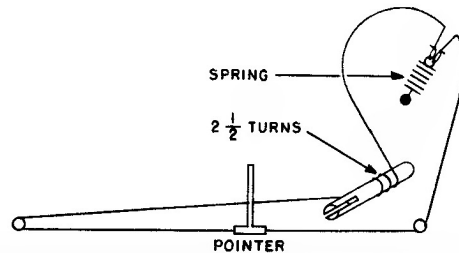
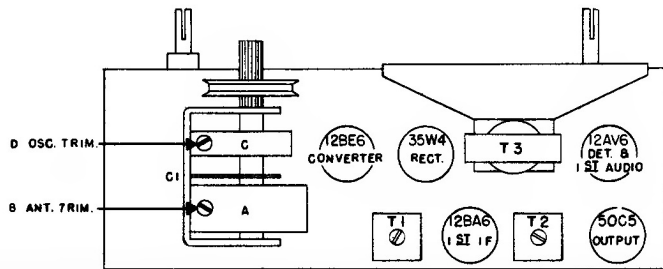


I.F. 455 KC.

NOTE:
 1. ALL VOLTAGES MEASURED FROM CHASSIS GROUND (V-2157 & V-2157-1 ONLY) OR COMMON NEGATIVE (V-2157U & V-2157-1U ONLY) USING A 20,000 OHM/VOLT METER.
 LINE VOLTAGE SET AT 117 V.A.C. READINGS SHOULD BE AS SHOWN ± 20 PER CENT.



DIAL DRIVE AND CHASSIS LAYOUT
 FOR V-2157 AND V-2157U CHASSIS



DIAL DRIVE
 FOR V-2157-1 AND V-2157-1U CHASSIS