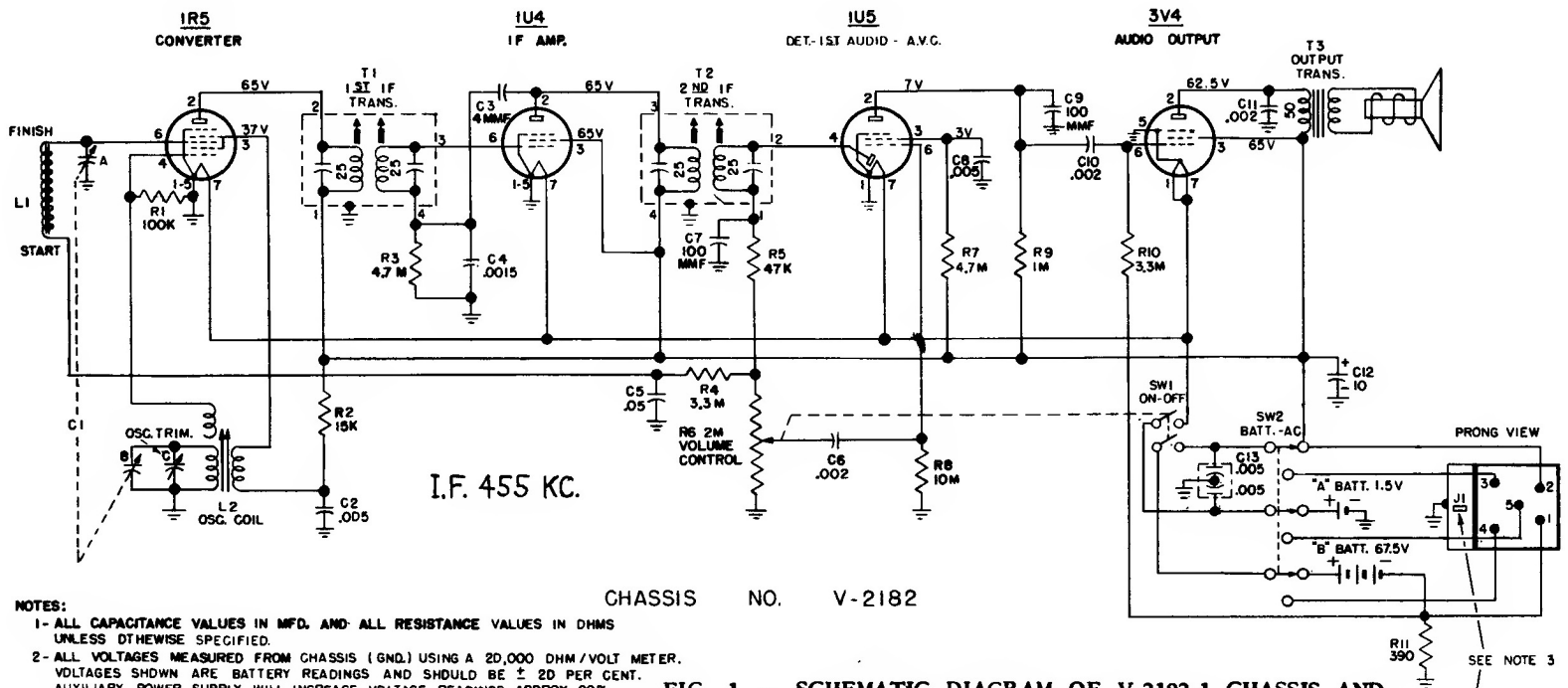


Westinghouse Electric Corporation.

Models H-572P4, H-573P4, H-576P4, Chassis V-2182-1  
MODEL H-377 AC POWER SUPPLY



I.F. 455 KC.

CHASSIS NO. V-2182

- NOTES:**
- 1- ALL CAPACITANCE VALUES IN MFD. AND ALL RESISTANCE VALUES IN OHMS UNLESS OTHERWISE SPECIFIED.
  - 2- ALL VOLTAGES MEASURED FROM CHASSIS (GND.) USING A 20,000 OHM/VOLT METER. VOLTAGES SHOWN ARE BATTERY READINGS AND SHOULD BE  $\pm 20$  PER CENT. AUXILIARY POWER SUPPLY WILL INCREASE VOLTAGE READINGS APPROX. 20%.
  - 3- WHEN AUXILIARY POWER SUPPLY (H-377) IS USED, PLUGGING P51 INTO J1 ACTUATES SW2 BATTERY-AC SWITCH.

FIG. 1 - SCHEMATIC DIAGRAM OF V-2182-1 CHASSIS AND H-377 AC POWER SUPPLY

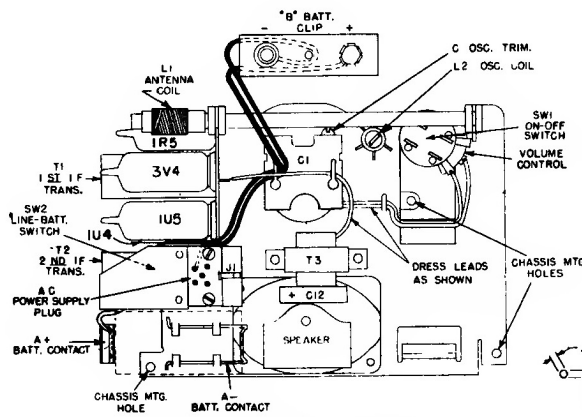


FIG. 2 - REAR VIEW OF V-2182-1 CHASSIS

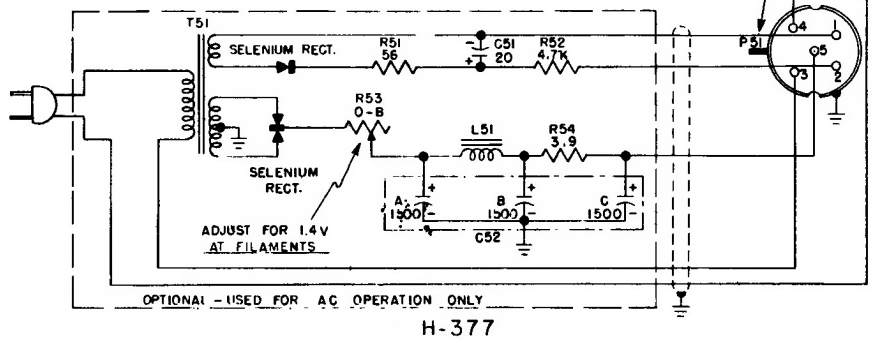


FIG. 3 - TOOL REQUIRED FOR IF ALIGNMENT

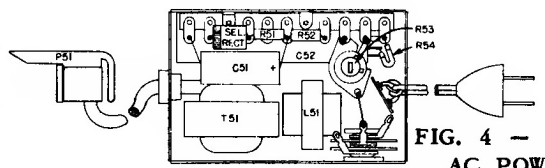


FIG. 4 - MODEL H-377 AC POWER SUPPLY