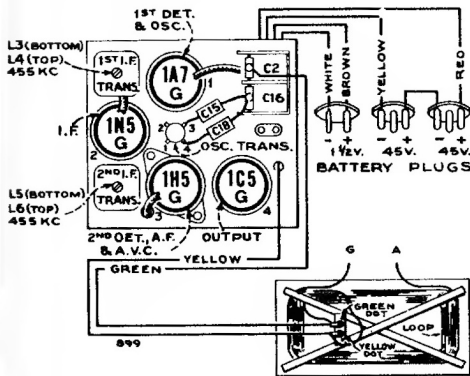


# Westinghouse Model WR-674



Tube Location

Note: Values with star (\*) are operating voltages. Values not starred are actual measured voltages. Measurements are made to chassis unless otherwise indicated, with set tuned to quiet point.

**Output Meter Alignment.**—If this method is used, connect the meter across the voice coil, and turn the receiver volume control to maximum.

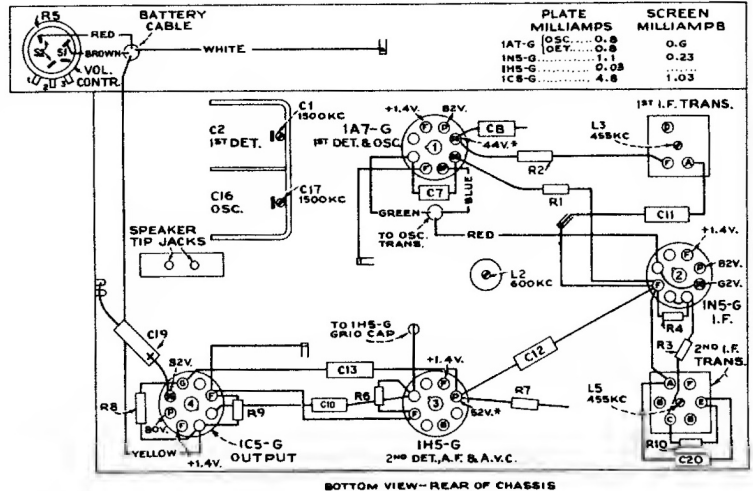
**Test-oscillator.**—For all alignment operations, keep the output as low as possible to avoid a-v-c action.

**Pre-setting Dial.**—With gang condenser in full mesh, the pointer should be horizontal.

### Precautionary Lead Dress.—

1. Dress speaker leads down to chassis.
2. The green lead from the loop to the antenna section of the gang should be dressed between the output and detector tube shields and pulled toward the far corner of the loop by means of the rubber band.
3. The spiral shield on the 1st-A.F. grid lead should be brought as close as possible to the grid cap.
4. Leads to the high side and tap of the volume control should be dressed down to the chassis and away from the output tube plate lead.

**Antenna.**—An antenna and ground may be connected to "A" and "G" at bottom of cabinet. If total length of antenna and lead-in is more than 150 feet, connect a 300 mmf capacitor in series with lead-in.



BOTTOM VIEW—REAR OF CHASSIS

Steps	Connect the high side of test-oscillator to—	Tune test-osc. to—	Turn radio dial to—	Adjust the following for max. peak output—
1	1N5-G grid cap, in series with .001 mfd.	455 kc	Quiet point between 550-750 kc	L5 and L6 (2nd I-F transformer)
2	1A7-G grid cap, in series with .001 mfd.	455 kc		L3 and L4 (1st I-F transformer)
3	Assemble chassis and batteries in correct position in cabinet, and fasten rear cover (loop) in place while making the following adjustments, which are accessible through holes in the bottom of the cabinet.			
4	Antenna terminal, in series with 200 mfd. Connect low side of test-osc. to "G" term.	1500 kc	1500 kc*	C17 (osc.) C1 (ant.)
5		600 kc	600 kc*	L2 (osc.) Rock in
6	Repeat steps 4 and 5.			

\* Use bottom of "1" in "1500" for 1500 kc calibration point, and use center of the last "0" in "600" for 600 kc calibration point.

