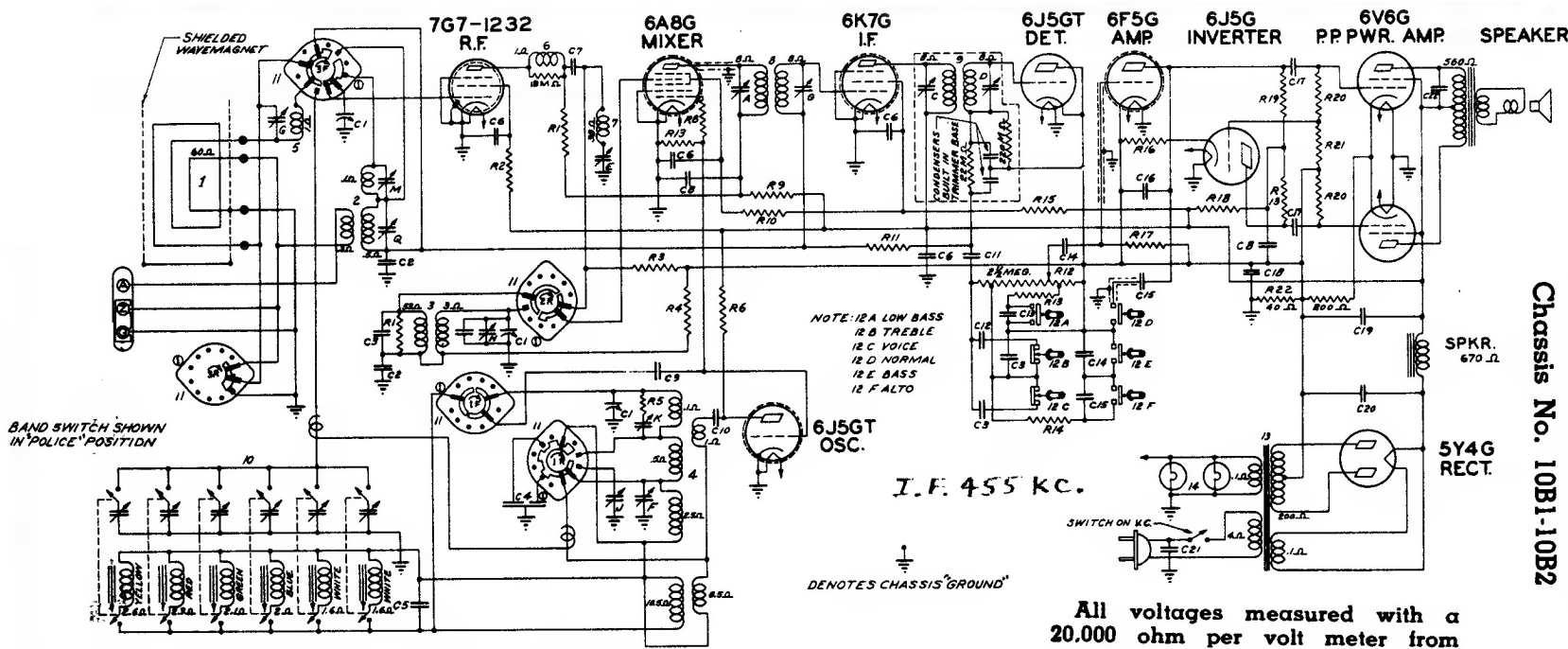


# Models 10S669-10S690

Chassis No. 10B1-10B2



NOTE: 12A LOW BASS  
12 B TREBLE  
12 C VOICE  
12 D NORMAL  
12 E BASS  
12 F ALTO

I.F. 455 KC.

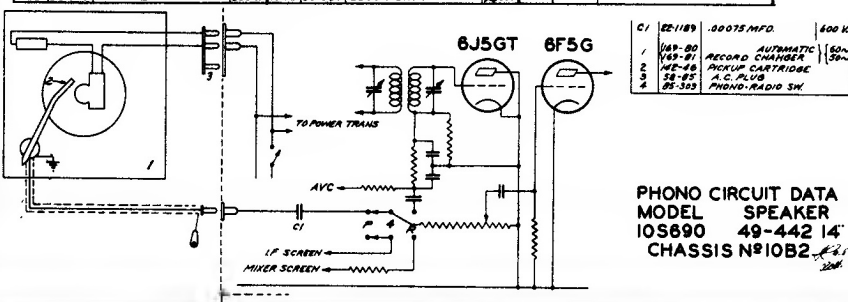
DENOTES CHASSIS "GROUND"

All voltages measured with a 20,000 ohm per volt meter from chassis to socket contact indicated.

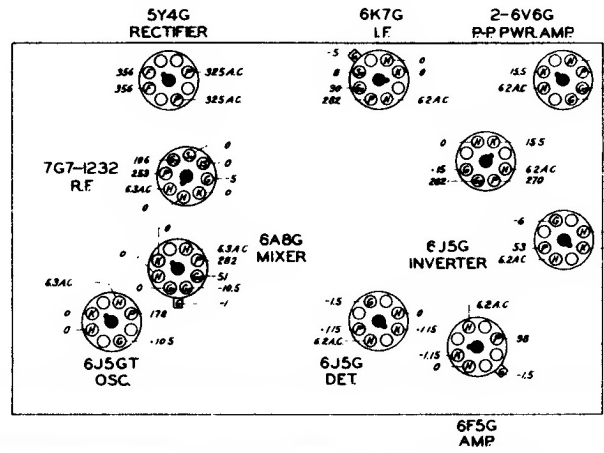
All voltages are positive D.C. unless marked otherwise.

Volume control full on.

Q#	PART NO.	DESCRIPTION	Q#	PART NO.	DESCRIPTION	Q#	PART NO.	DESCRIPTION
C1	EE-1232	THREE GANG VARIABLE	R1	63-587	4700 OHM	R21	63-640	47M OHM
C2	EE-829	.05 MFD.	R2	63-595	100 M OHM	R22	63-1048	TWO SECTION CANDORNA
C3	EE-470	.00015 MFD.	R3	63-580	15M OHM			
C4	EE-1639	DUAL PADDER	R4	63-539	10M OHM	1		WAVEMAGNET ASSEMBLY
C5	EE-868	COMPENSATING COND.	R5	63-576	62 OHM	2	53787	ANTENNA COIL
C6	EE-820	.05 MFD.	R6	63-51	15 M OHM	3	53856	DETECTOR COIL
C7	EE-47	.0005 MFD.	R7	63-581	470 OHM	4	53743	OSCILLATOR COIL
C8	EE-225	.1 MFD.	R8	63-605	1000 OHM	5	53789	LOOP LOADING COIL
C9	EE-127	.25 M MFD.	R9	63-271	1 MEG OHM	6	53826	COIL & RES. ASSEMBLY
C10	EE-182	.00025 MFD.	R10	63-643	18M OHM	7	95-844	125 I.F. TRANSFORMER
C11	EE-321	.02 MFD.	R11	63-1075	VOLUME CONTROL	8	53926	AUTOMATIC TUNING ASSEM
C12	EE-354	.00025 MFD.	R12	63-579	47 M OHM	9	95-296	BAND SELECTOR SWITCH
C13	EE-229	.005 MFD.	R13	63-714	68M OHM	10	53971	10K TONE CONTROL
C14	EE-492	.005 MFD.	R14	63-1139	39 M OHM	11	95-833	PWR. TRANS. 117K 50-60W
C15	EE-463	.04 MFD.	R15	63-523	2200 OHM	12	100-36	DIAL LIGHT 6.3 V. .25A.
C16	EE-354	.00025 MFD.	R16	63-596	68M OHM			
C17	EE-171	.05 MFD.	R17	63-576	62 OHM			
C18	EE-321	.02 MFD.	R18	63-576	62 OHM			
C19	EE-100	10 MFD. ELECTROLYTIC	R19	63-576	62 OHM			
C20	EE-100	10 MFD. ELECTROLYTIC	R20	63-671	320 M OHM			
C21	EE-463	.04 MFD.						
C22	EE-629	.01 MFD.						



PHONO CIRCUIT DATA  
MODEL SPEAKER  
10S690 49-442 14"  
CHASSIS #10B2



SOCKET VOLTAGES—BOTTOM VIEW

Zenith Radio