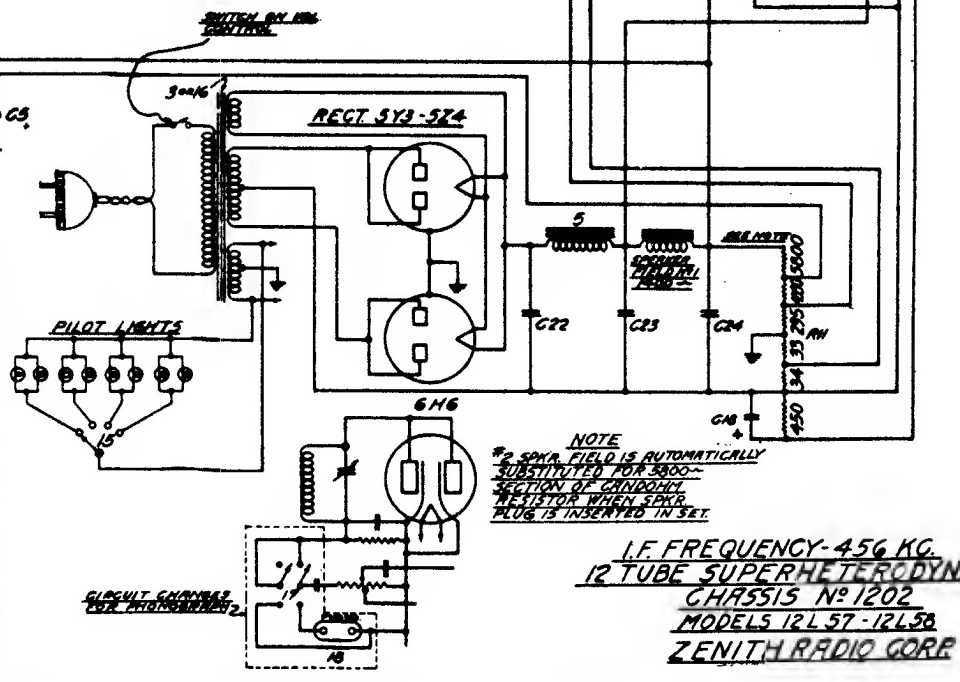


| QWG PART NO | DESCRIPTION | QWG PART NO | DESCRIPTION |
|-------------|----------------------|-------------|--------------------------|
| R1 63-278 | 93M OHMS | C22 22-284 | 16 .5FD 450V |
| R2 63-280 | 49M | C23 22-435 | 5 MFD. 400V |
| R3 63-288 | 19M | C24 22-435 | 4 MFD. 400V |
| R4 63-293 | 990M | C25 22-433 | 5 MFD. 400V |
| R5 63-303 | 700 | C26 22-435 | .02 600V |
| R6 63-373 | 11M | C27 22-424 | 30-180MMFD PRDGR |
| R7 63-450 | 1 MEG. VOL CONTROL | C28 22-420 | 10 MFD 25V |
| R8 63-451 | 1 MEG. TONE CONTROL | C29 22-250 | .05 MFD 300V |
| R9 63-481 | 400M OHMS | 1 85-291 | 1ST I.F. TRANS. .456 KG. |
| R10 63-466 | 990 | 2 85-292 | 2ND I.F. |
| R11 63-471 | GRNDOHM | 3 85-306 | 117V. 50-60 CYCLE TRANS. |
| R12 63-242 | 2500 OHMS | 4 95-307 | AUDIO TRANS. |
| C1 22-82 | .001 MFD. 600V | 5 95-320 | POWER CHOKE |
| C2 22-127 | .000025 MFD. 600V | 6 122-10 | SHADOW METER |
| C3 22-147 | .0005 600V | 7 20-120 | I.F. PLATE CHOKE |
| C4 22-162 | .0001 600V | 8 20-124 | ANT. CHOKES 25M. |
| C5 22-170 | .1 400V | 9 5-3747 | ANT. COIL ASSEM. |
| C6 22-188 | .02 400V | 10 5-3746 | DET. COIL ASSEM. |
| C7 22-190 | .200 200V | 11 5-3745 | OSC. COIL ASSEM. |
| C8 22-212 | .05 400V | 12 49-121 | 12 SPKR. MODEL 12 LST |
| C9 22-229 | .005 600V | 13 49-124 | 12" MODEL |
| C10 22-243 | 0V 400V | 14 49-125 | 6" 5800-FIELD 12L58 |
| C11 22-289 | .00005 600V | 15 85-82 | BRAND SELECTOR SW. |
| C12 22-324 | 2-35 MMFD. 3 SECTION | 16 95-310 | 25-ALL VOLT. PWR TRANS. |
| C13 22-345 | .0011 MFD. 600V | 17 85-39 | PHONO. SWITCH. |
| C14 22-358 | .002 600V | 18 44-7 | PHONO. JACK |
| C15 22-208 | 200 .550 MMFD. PRDGR | | |
| C16 22-168 | .003 MFD. 600V | | |
| C17 22-409 | 3 GANG VARIABLE | | |
| C18 22-405 | 10 MFD. 50V | | |
| C19 22-410 | 003 MFD. 600V | | |
| C20 22-411 | .0023 600V | | |
| C21 22-418 | 2-35 MMFD. | | |

| QWG PART NO | DESCRIPTION | QWG PART NO | DESCRIPTION |
|-------------|--------------------------|-------------|--------------------------|
| C22 22-284 | 16 .5FD 450V | 1 85-291 | 1ST I.F. TRANS. .456 KG. |
| C23 22-435 | 5 MFD. 400V | 2 85-292 | 2ND I.F. |
| C24 22-435 | 4 MFD. 400V | 3 85-306 | 117V. 50-60 CYCLE TRANS. |
| C25 22-433 | 5 MFD. 400V | 4 95-307 | AUDIO TRANS. |
| C26 22-435 | .02 600V | 5 95-320 | POWER CHOKE |
| C27 22-424 | 30-180MMFD PRDGR | 6 122-10 | SHADOW METER |
| C28 22-420 | 10 MFD 25V | 7 20-120 | I.F. PLATE CHOKE |
| C29 22-250 | .05 MFD 300V | 8 20-124 | ANT. CHOKES 25M. |
| 1 85-291 | 1ST I.F. TRANS. .456 KG. | 9 5-3747 | ANT. COIL ASSEM. |
| 2 85-292 | 2ND I.F. | 10 5-3746 | DET. COIL ASSEM. |
| 3 85-306 | 117V. 50-60 CYCLE TRANS. | 11 5-3745 | OSC. COIL ASSEM. |
| 4 95-307 | AUDIO TRANS. | 12 49-121 | 12 SPKR. MODEL 12 LST |
| 5 95-320 | POWER CHOKE | 13 49-124 | 12" MODEL |
| 6 122-10 | SHADOW METER | 14 49-125 | 6" 5800-FIELD 12L58 |
| 7 20-120 | I.F. PLATE CHOKE | 15 85-82 | BRAND SELECTOR SW. |
| 8 20-124 | ANT. CHOKES 25M. | 16 95-310 | 25-ALL VOLT. PWR TRANS. |
| 9 5-3747 | ANT. COIL ASSEM. | 17 85-39 | PHONO. SWITCH. |
| 10 5-3746 | DET. COIL ASSEM. | 18 44-7 | PHONO. JACK |
| 11 5-3745 | OSC. COIL ASSEM. | | |
| 12 49-121 | 12 SPKR. MODEL 12 LST | | |
| 13 49-124 | 12" MODEL | | |
| 14 49-125 | 6" 5800-FIELD 12L58 | | |
| 15 85-82 | BRAND SELECTOR SW. | | |
| 16 95-310 | 25-ALL VOLT. PWR TRANS. | | |
| 17 85-39 | PHONO. SWITCH. | | |
| 18 44-7 | PHONO. JACK | | |



NOTE
 * 5800-FIELD IS AUTOMATICALLY
 SUBSTITUTED FOR 5800-
 SECTION OF CHOKES
 RESISTOR WHEN 5800-
 PLUG IS INSERTED IN SET

I.F. FREQUENCY-456 KG.
12 TUBE SUPERHETERODYNE
CH9515 No. 1202
MODELS 12L57-12L58
ZENITH RADIO CORP.